

Banarola

Arpa



Barcarola

Ida Moberg

Moderato

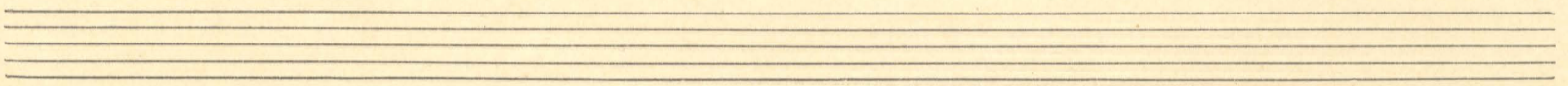
Allegro

Handwritten musical notation for the first system, including a treble and bass clef, a 2/4 time signature, and dynamic markings such as *rit* and *Allegro*.

Handwritten musical notation for the second system, featuring a treble and bass clef, a 2/4 time signature, and a fermata over a melodic line.

Handwritten musical notation for the third system, starting with the word *Fine* and the number 15, followed by a treble and bass clef and a 2/4 time signature.

Handwritten musical notation for the fourth system, including a treble and bass clef and a 2/4 time signature.



2

Opera
V. L.

Adina

Handwritten musical notation, first system. The upper staff is in treble clef and the lower staff is in bass clef. The key signature has one flat (B-flat). The first measure is marked *mp*. The notation consists of quarter and eighth notes with stems.

Handwritten musical notation, second system. Continuation of the piece with similar note values and stems.

Handwritten musical notation, third system. Continuation of the piece.

Handwritten musical notation, fourth system. Continuation of the piece.

Handwritten musical notation, fifth system. The system concludes with a double bar line. Above the staff, the text "D. C. al Fine" is written in cursive. The number "41" is written above the first measure of this system.