

Mayrutto Barcarola

Tdo Moberg

Mtr

Handwritten musical notation on a single staff. It begins with a treble clef, a key signature of one flat (Bb), and a common time signature (C). The first measure contains a whole rest. Above the staff, the word "pizz" is written. Below the staff, "pp" is written. A second measure contains a whole note. Above the staff, the number "2" is written. The staff continues with a series of eighth notes.

Handwritten musical notation on a single staff. It begins with a treble clef, a key signature of one flat (Bb), and a common time signature (C). The staff contains a series of eighth notes. Above the staff, the word "arco" is written in blue ink. Below the staff, "p" is written.

Handwritten musical notation on a single staff. It begins with a treble clef, a key signature of one flat (Bb), and a common time signature (C). The staff contains a series of eighth notes.

Handwritten musical notation on a single staff. It begins with a treble clef, a key signature of one flat (Bb), and a common time signature (C). The staff contains a series of eighth notes. Above the staff, the number "6" is written. A blue letter "B" is written above the staff towards the end.

Handwritten musical notation on a single staff. It begins with a treble clef, a key signature of one flat (Bb), and a common time signature (C). The staff contains a series of eighth notes. Above the staff, the word "cresc" is written.

Handwritten musical notation on a single staff. It begins with a treble clef, a key signature of one flat (Bb), and a common time signature (C). The staff contains a series of eighth notes. Above the staff, the word "f" is written in blue ink.

Handwritten musical notation on a single staff. It begins with a treble clef, a key signature of one flat (Bb), and a common time signature (C). The staff contains a series of eighth notes. Above the staff, the word "dim" is written.

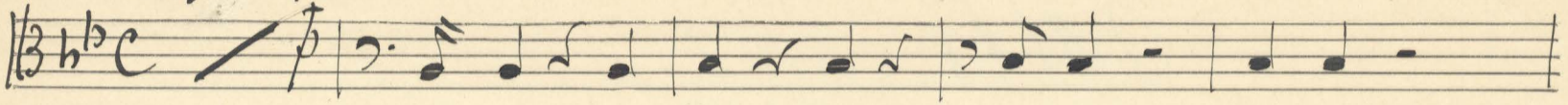
Handwritten musical notation on a single staff. It begins with a treble clef, a key signature of one flat (Bb), and a common time signature (C). The staff contains a series of eighth notes. Above the staff, the word "dim" is written.

Handwritten musical notation on a single staff. It begins with a treble clef, a key signature of one flat (Bb), and a common time signature (C). The staff contains a series of eighth notes. Above the staff, "pp" is written. Below the staff, "Fine 1" is written. The staff ends with a double bar line and the initials "V.L."

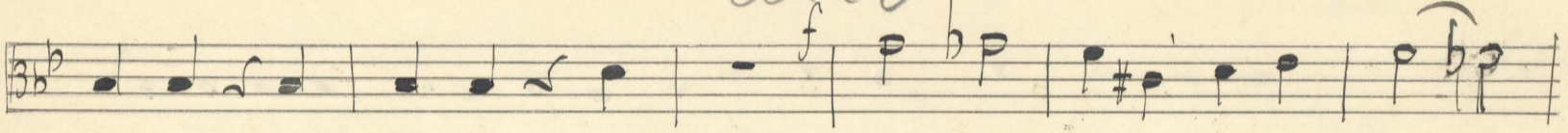


D

2 *pir*



*Arco*

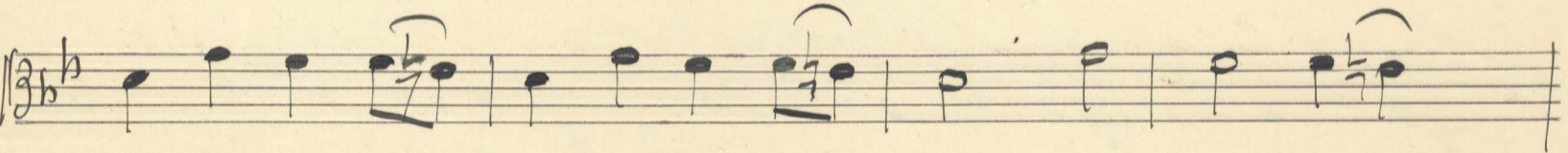
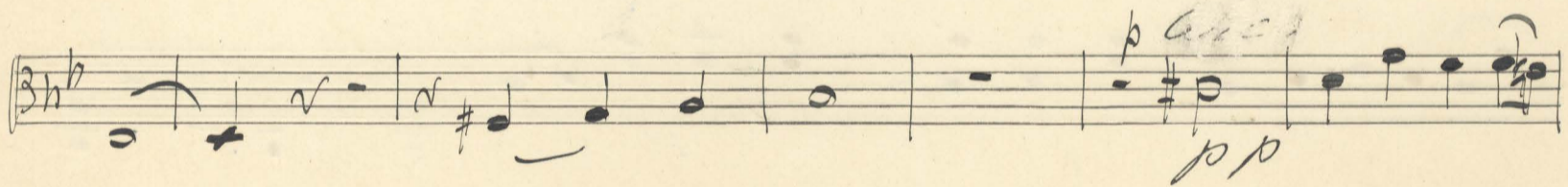
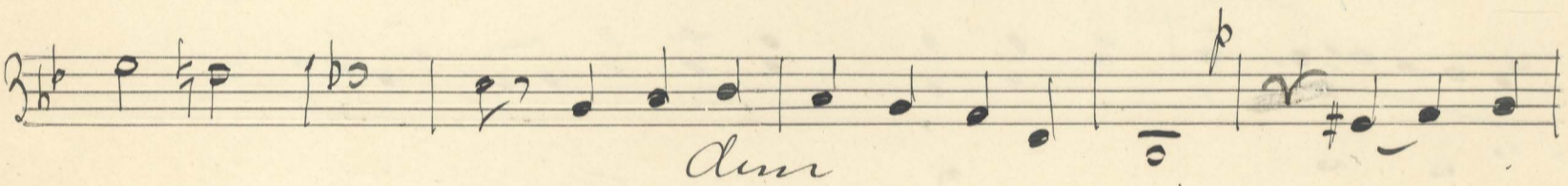
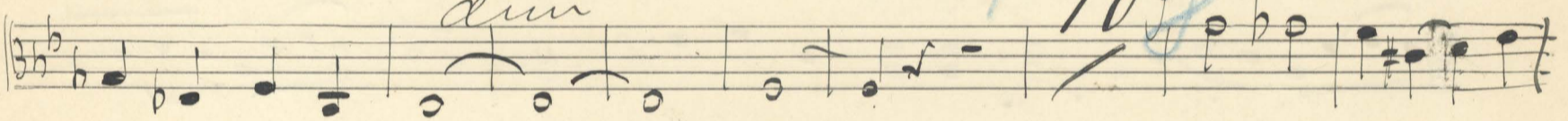


8



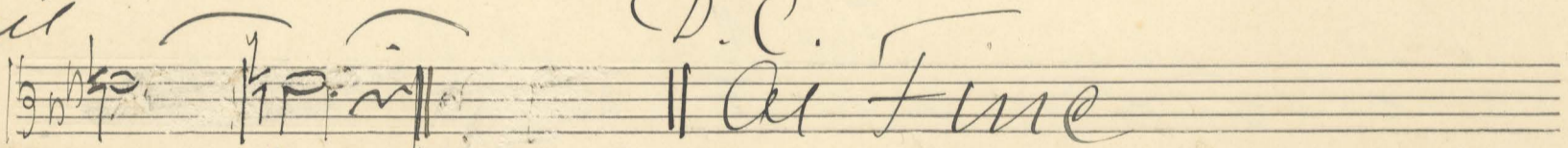
*dim*

F 10



*rit*

*D.C.*



*pp*

*rit*



B. & H.  
Nr. 18. A.  
5. 09.