

BASS

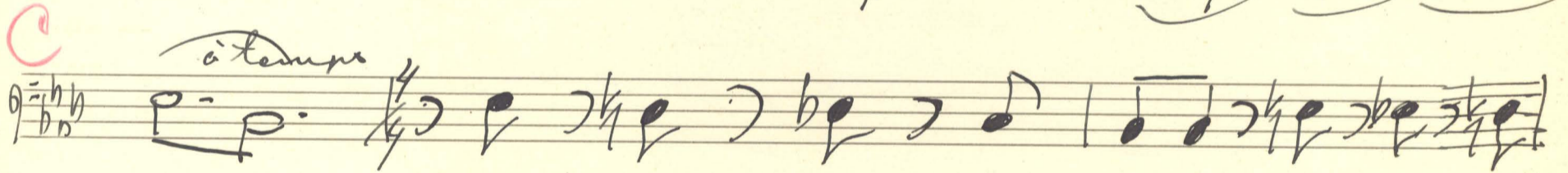
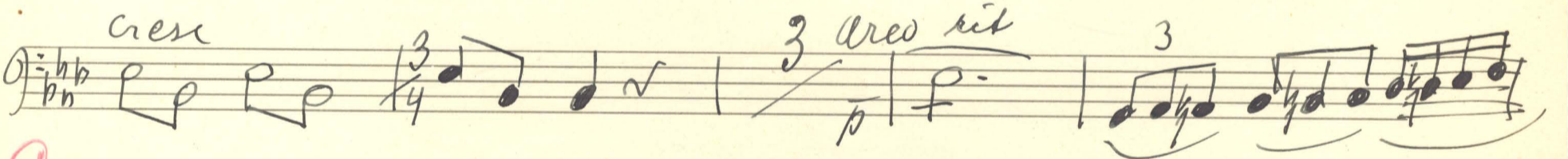
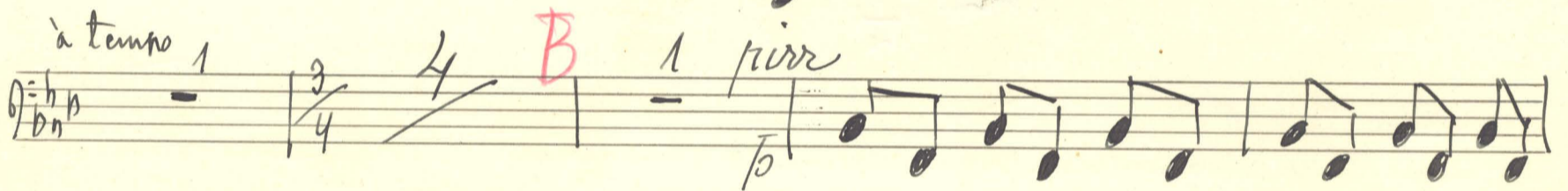
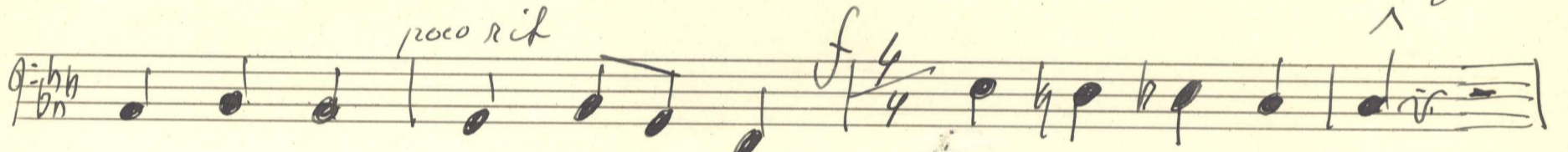
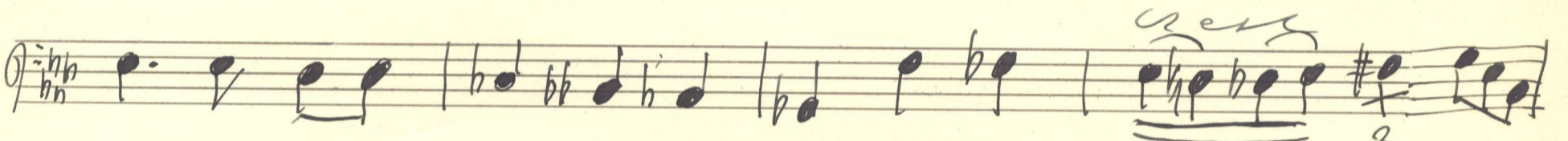
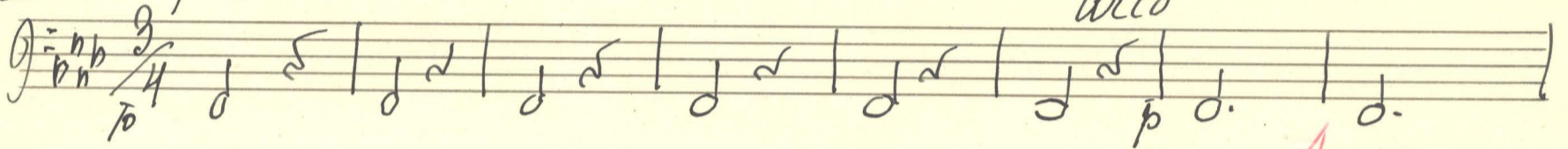
"Sankt Michael"

(Maurice Ravel)

für Bl. Köv. u. Orchester

Andante
Lamento pizz

Ida Moberg



Handwritten musical notation on a single staff. The key signature is two flats (B-flat and E-flat). The time signature is 3/4. The tempo marking *ten* is written above the staff. The notation includes quarter notes, eighth notes, and a half note.

Handwritten musical notation on a single staff. The key signature is two flats. The time signature is 3/4. A red '5' is written above the first measure. A red 'D' is written above the second measure. The notation includes a whole note, quarter notes, and eighth notes.

Handwritten musical notation on a single staff. The key signature is two flats. The notation includes quarter notes, eighth notes, and a half note. The dynamic marking *mf* is written above the staff, and the word *cresc* is written below the staff.

Handwritten musical notation on a single staff. The key signature is two flats. The time signature is 4/4. A red 'E' is written above the first measure. The dynamic marking *accel* is written above the staff. The notation includes quarter notes and half notes.

Handwritten musical notation on a single staff. The key signature is two flats. The notation includes quarter notes and half notes. The word *cresc* is written above the staff.

Handwritten musical notation on a single staff. The key signature is two flats. The time signature is 4/4. The notation includes quarter notes and half notes.

Handwritten musical notation on a single staff. The key signature is two flats. The time signature is 4/4. A red 'F' is written above the staff. The notation includes quarter notes, eighth notes, and a triplet of eighth notes.

Handwritten musical notation on a single staff. The key signature is two flats. The time signature is 3/4. The notation includes quarter notes and eighth notes, with triplet markings.

Handwritten musical notation on a single staff. The key signature is two flats. The time signature is 4/4. The notation includes quarter notes and eighth notes.

Handwritten musical notation on a single staff. The key signature is two flats. The tempo marking *Adagio* is written above the staff. The notation includes quarter notes, eighth notes, and a triplet of eighth notes.

Handwritten musical notation on a single staff. The key signature is two flats. The notation includes quarter notes and half notes.

Handwritten musical notation on a single staff. The key signature is two flats. The tempo marking *ff* and *al tempo* are written above the staff. The notation includes quarter notes, half notes, and a triplet of quarter notes. The piece concludes with a double bar line and a 4/4 time signature.

Handwritten musical notation on a single staff. It begins with a treble clef, a key signature of two flats (B-flat and E-flat), and a 4/4 time signature. The notation includes various rhythmic values such as quarter, eighth, and sixteenth notes, along with rests. Above the staff, there are handwritten numbers: 4, 3, 3, 2, 4, 1, 3, 3, and 4/4. The staff concludes with a double bar line.

Handwritten musical notation on a single staff. It starts with a treble clef, a key signature of two flats, and a 4/4 time signature. The notation features quarter and eighth notes with rests. A red letter 'H' is written above the staff. Above the staff, there are handwritten numbers: 3, 2, 4, 1, 3, 2, and 4. The staff ends with a double bar line.

Handwritten musical notation on a single staff. It begins with a treble clef, a key signature of two flats, and a 4/4 time signature. The notation consists of quarter notes and rests. A red letter 'I' is written above the staff. Above the staff, there are handwritten numbers: 3, 4, 1, and 4. The staff ends with a double bar line.

Handwritten musical notation on a single staff. It starts with a treble clef, a key signature of two flats, and a 4/4 time signature. The notation includes quarter notes and rests. A red letter 'K' is written above the staff. Above the staff, there are handwritten numbers: 1, 5, 1, 3, 2, 4, 2, 3, 5, and #. The staff ends with a double bar line.

Handwritten musical notation on a single staff. It begins with a treble clef, a key signature of three sharps (F#, C#, G#), and a 4/4 time signature. The notation features quarter notes and eighth notes. A red letter 'L' is written above the staff. The staff ends with a double bar line.

Handwritten musical notation on a single staff. It starts with a treble clef, a key signature of three sharps, and a 4/4 time signature. The notation includes quarter notes and eighth notes. The staff ends with a double bar line.

Handwritten musical notation on a single staff. It begins with a treble clef, a key signature of three sharps, and a 4/4 time signature. The notation features quarter notes and eighth notes. The staff ends with a double bar line.

Handwritten musical notation on a single staff. It starts with a treble clef, a key signature of three sharps, and a 4/4 time signature. The notation includes quarter notes and eighth notes. A red letter 'M' is written above the staff. Above the staff, there are handwritten numbers: 2, 1, and 4. The staff ends with a double bar line.

Handwritten musical notation on a single staff. It begins with a treble clef, a key signature of three sharps, and a 4/4 time signature. The notation features quarter notes and eighth notes. A red letter 'N' is written above the staff. Above the staff, there are handwritten numbers: 4, 3, 1, and 4. The staff ends with a double bar line.

Handwritten musical notation on a single staff. It starts with a treble clef, a key signature of three sharps, and a 4/4 time signature. The notation includes quarter notes and eighth notes. The staff ends with a double bar line.

Handwritten musical notation on a single staff. It begins with a treble clef, a key signature of three sharps, and a 4/4 time signature. The notation features quarter notes and eighth notes. The staff ends with a double bar line.

Handwritten musical notation on a single staff. It starts with a treble clef, a key signature of three sharps, and a 4/4 time signature. The notation includes quarter notes and eighth notes. The staff ends with a double bar line.

