

Corni I - II in F

1. Punkt Michael, für bl. Kor.-Orchester
(Manfred Kreyer)

Ed. Moberg

Andante
Lamento

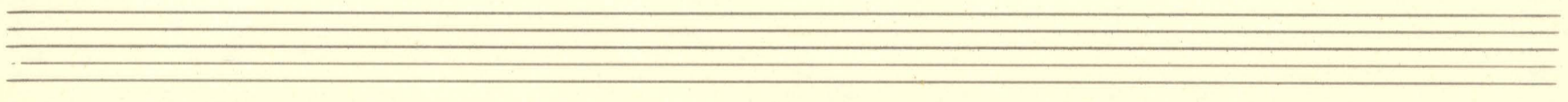
Handwritten musical notation for the first system, featuring two staves. The top staff is for Corni I and the bottom for Corni II. Both staves are in the key of F major and 3/4 time. The music begins with a whole rest in the first measure, followed by a series of notes and rests. A first ending bracket is present over the first two measures of the second staff.

Handwritten musical notation for the second system. It continues the piece with various rhythmic values and rests. A red letter 'A' is written above the second measure of the top staff. The system concludes with a 4/4 time signature change and the word 'ris' written below the notes.

Handwritten musical notation for the third system. The top staff features a melodic line with a 'daci' marking above it. The bottom staff has a 'à tempo' marking. A red letter 'B' is written above the final measure of the top staff. The system ends with a 3/4 time signature change.

Handwritten musical notation for the fourth system. The top staff contains a series of whole rests. The bottom staff features a bass line with notes and rests, including a 'pp' dynamic marking. A 4/4 time signature change is indicated above the final measure.

Handwritten musical notation for the fifth system. The top staff has notes and rests with a 'p' dynamic marking. The bottom staff continues the bass line with notes and rests, including a 'rit' marking. The system concludes with a first ending bracket and a 'V.S.' marking.



Handwritten musical notation, first system. Includes a red circled 'C' above the first measure. The notation features a treble clef, a key signature of one flat (B-flat), and a common time signature. The tempo marking 'a tempo' is written above the staff. The first measure contains a whole note chord with a '1' above it. The second measure has a 2/4 time signature and a 4/4 time signature. The piece begins with a piano (*pp*) dynamic.

Handwritten musical notation, second system. Features a treble clef and a key signature of one flat. The first measure has a 3/4 time signature and a forte (*f*) dynamic. The second measure has a 4/4 time signature. The third measure has a 4/4 time signature. The fourth measure has a 3/4 time signature. The fifth measure has a 3/4 time signature. The sixth measure has a 3/4 time signature. The notation includes various note values and rests.

Handwritten musical notation, third system. Features a treble clef and a key signature of one flat. The notation includes various note values and rests, with a 2/4 time signature appearing in the second measure.

Handwritten musical notation, fourth system. Features a treble clef and a key signature of one flat. The first measure has a 4/4 time signature. The second measure has a 3/4 time signature. The third measure has a 4/4 time signature. The fourth measure has a 4/4 time signature. The fifth measure has a 4/4 time signature. The sixth measure has a 4/4 time signature. The seventh measure has a 4/4 time signature. The eighth measure has a 4/4 time signature. The notation includes various note values and rests, with a red circled 'D' above the sixth measure.

Handwritten musical notation, fifth system. Features a treble clef and a key signature of one flat. The notation includes various note values and rests.

Handwritten musical notation, sixth system. Includes the marking 'Accel' above the staff. The first measure has a 4/4 time signature and a mezzo-forte (*mf*) dynamic with a crescendo hairpin. The second measure has a 4/4 time signature. The third measure has a 4/4 time signature. The fourth measure has a 4/4 time signature. The fifth measure has a 4/4 time signature. The sixth measure has a 4/4 time signature. The seventh measure has a 4/4 time signature. The eighth measure has a 4/4 time signature. The notation includes various note values and rests, with a red circled 'E' above the fourth measure.

Handwritten musical notation for the first system, featuring a treble and bass clef with various notes and rests. A red 'F' is written above the staff.

Handwritten musical notation for the second system, showing a treble and bass clef with notes and rests. A 3/4 time signature is visible.

Handwritten musical notation for the third system, including a treble and bass clef with notes and rests. A red 'G' is written above the staff.

Handwritten musical notation for the fourth system, featuring a treble and bass clef with notes and rests. The text "i tempo" is written above the staff.

Handwritten musical notation for the fifth system, showing a treble and bass clef with notes and rests.

Handwritten musical notation for the sixth system, including a treble and bass clef with notes and rests. A red 'H' is written to the left and a red 'I' to the right.

I

Handwritten musical notation for system I, measures 1-3. The treble staff contains notes with stems, and the bass staff contains notes with stems. There are rests in both staves at the beginning of each measure. A red 'I' is written above the first measure. A red 'K' is written above the third measure. The notation includes various note values and rests.

Z

Handwritten musical notation for system Z, measures 1-3. The treble staff contains notes with stems, and the bass staff contains notes with stems. There are rests in both staves at the beginning of each measure. A red 'Z' is written to the left of the first measure. Red letters 'M' and 'N' are written above the first and second measures respectively. The notation includes various note values and rests.

Handwritten musical notation for system 1, measures 1-3. The treble staff contains notes with stems, and the bass staff contains notes with stems. There are rests in both staves at the beginning of each measure. The notation includes various note values and rests.

Six sets of empty musical staves, each consisting of a treble and bass staff joined by a brace on the left. The staves are blank and ready for notation.