

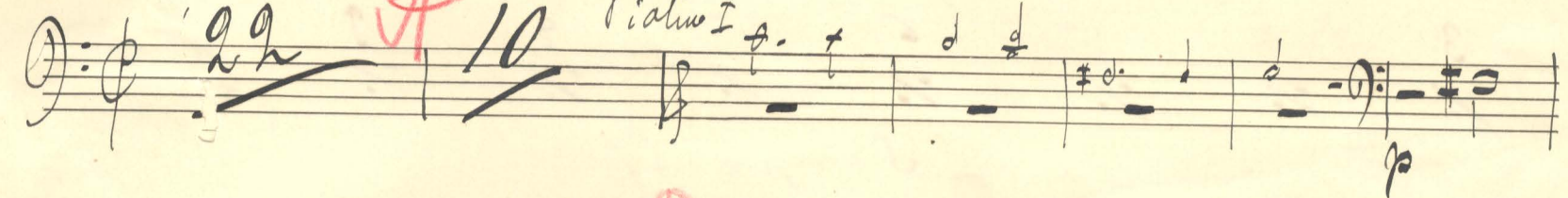
BASS

Nº 1 Soluppgång

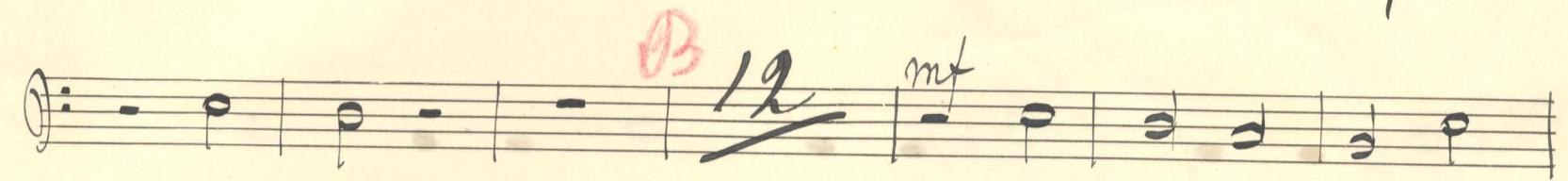
Andante

Violino I *p*

*A* 10



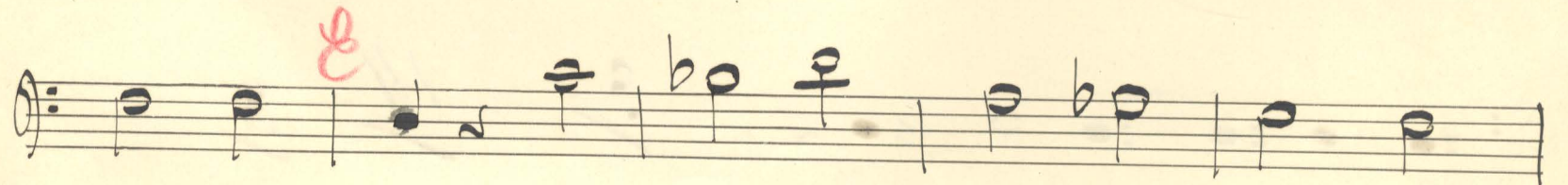
*B* 12 *mf*



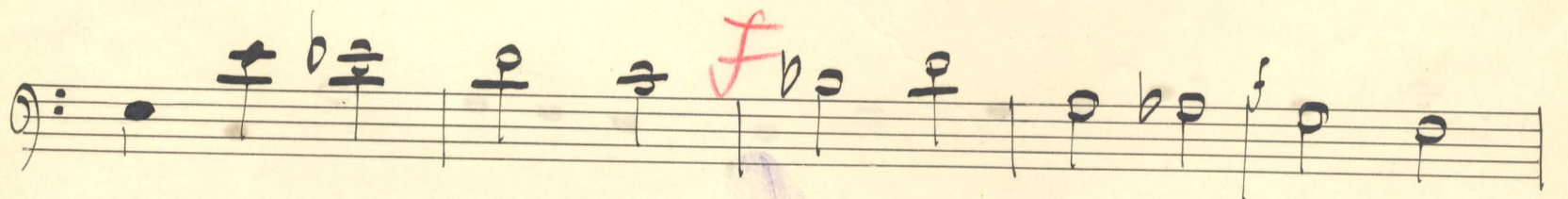
*crec*



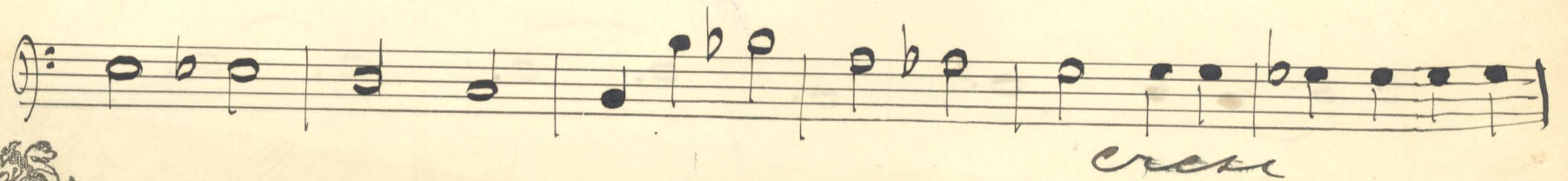
*E*



*F*



*crec*



Handwritten musical notation on a single staff, starting with a treble clef and a forte (*f*) dynamic marking. The notes are mostly quarter notes. A red 'G' with a '1' is written above the staff. The word *cresc* is written below the staff.

Handwritten musical notation on a single staff, starting with a bass clef. The notes are mostly quarter notes. Blue numbers 2, 3, 4, 5, 6, and 7 are written above the staff.

Handwritten musical notation on a single staff, starting with a bass clef. The notes are mostly quarter notes. Blue numbers 8 and 9 are written above the staff.

Handwritten musical notation on a single staff, starting with a bass clef. The notes are mostly quarter notes. A blue '3' is written above the staff.

Handwritten musical notation on a single staff, starting with a treble clef and a key signature of one sharp (F#). The notes are mostly quarter notes. The word *pizz* is written above the first measure, and *arco* is written below the staff after a 4-measure rest.

Handwritten musical notation on a single staff, starting with a treble clef. The notes are mostly quarter notes. The words *dim rit* and *pp* are written above the staff.

Moderato - 2 Præcludium.

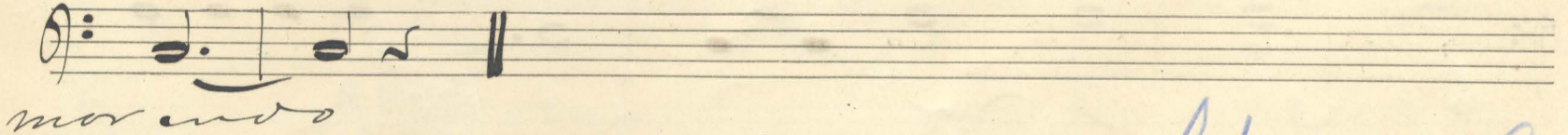
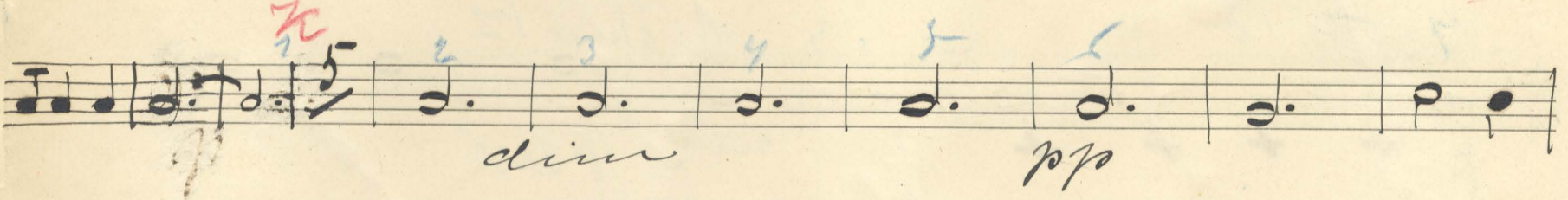
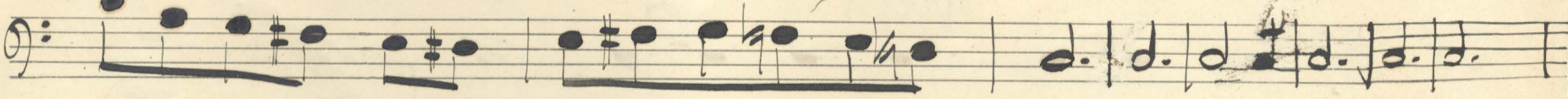
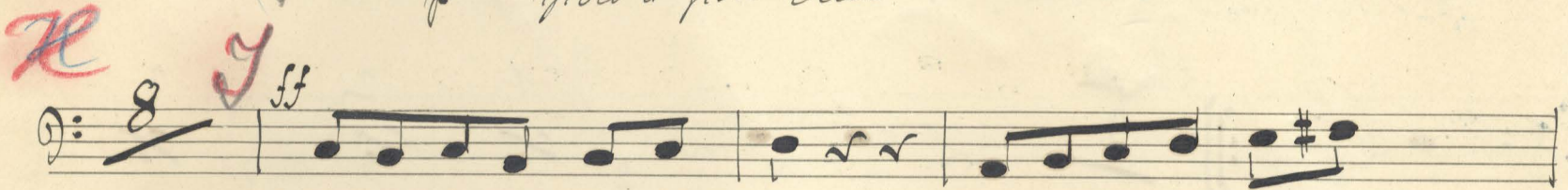
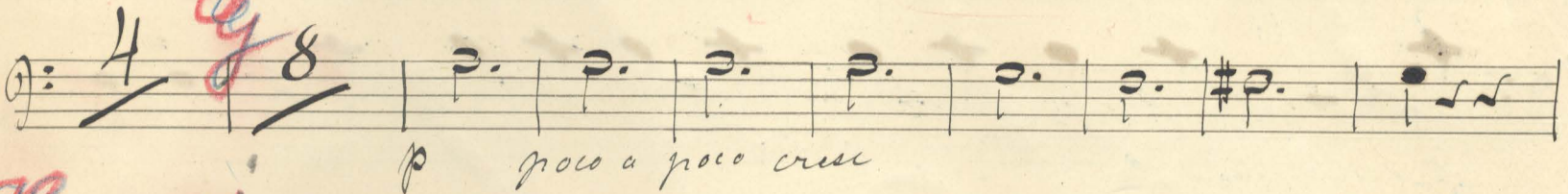
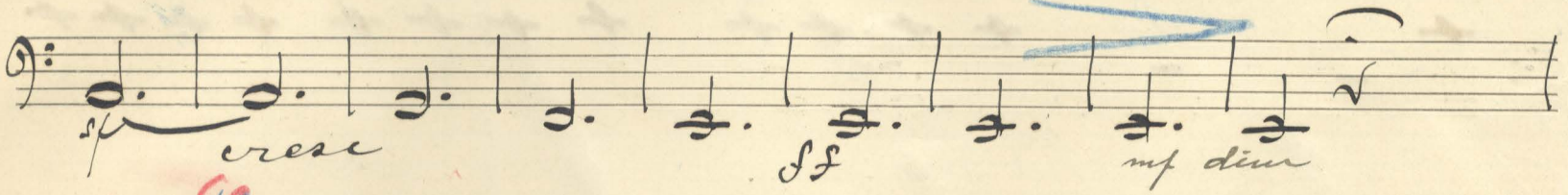
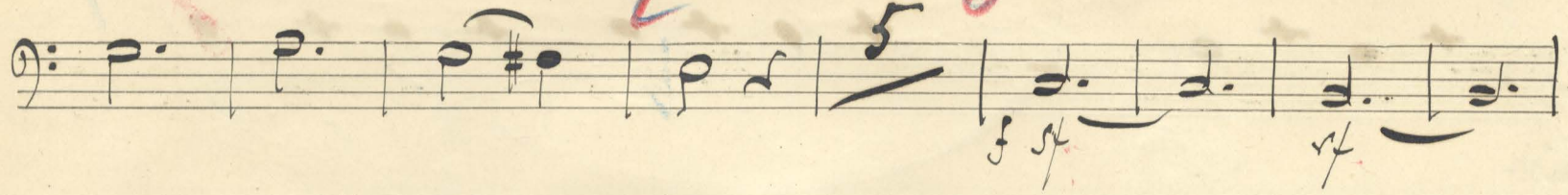
Handwritten musical notation on a single staff, starting with a treble clef and a 3/4 time signature. The notes are mostly quarter notes. The dynamic marking *pp* is written below the staff. Blue numbers 1 through 8 are written above the staff.

Handwritten musical notation on a single staff, starting with a bass clef. The notes are mostly quarter notes. The dynamic marking *p* is written below the staff. Blue numbers 9 through 14 are written above the staff.

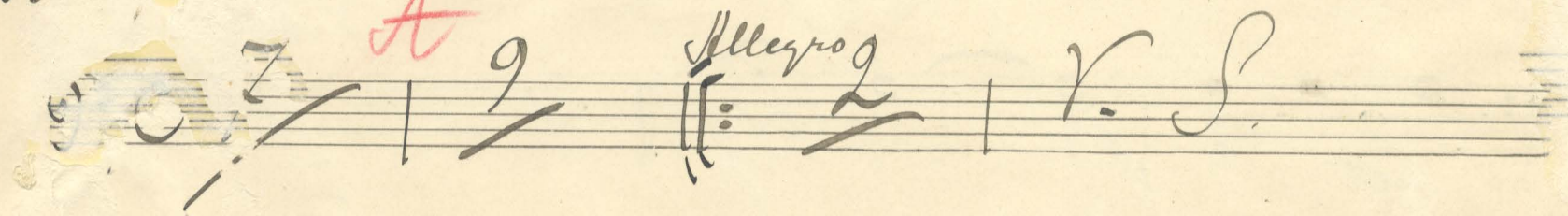
Handwritten musical notation on a single staff, starting with a treble clef. The notes are mostly quarter notes. The word *mu* is written below the staff. Blue numbers 14 and 8 are written above the staff.

Handwritten musical notation on a single staff, starting with a bass clef and a forte (*f*) dynamic marking. The notes are mostly quarter notes.

Handwritten musical notation on a single staff, starting with a treble clef. The notes are mostly quarter notes.



~~No. 3~~ ~~Alto~~ ~~St. Mark~~



Adagio

Stillhet (vaggång ur "Kärlens Ljus")

Basso

Joh. Moberg

Con Sord *pp* *H*

Senza Sord *B* *C* *mp* *Basso* *mp*

*H* (con Sord) *pizz*

*Arco* *pp*