

Suite

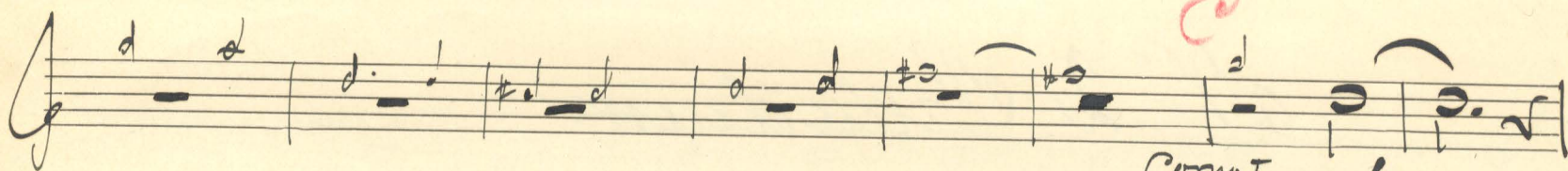
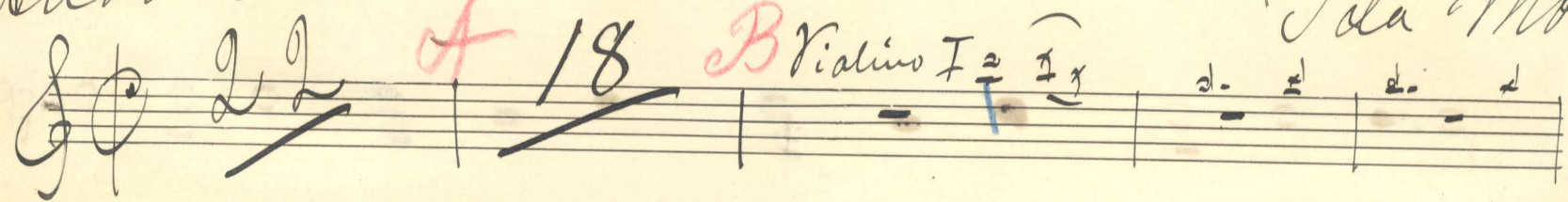
Corno I in F

Nº 1 Soloppgång

Andante

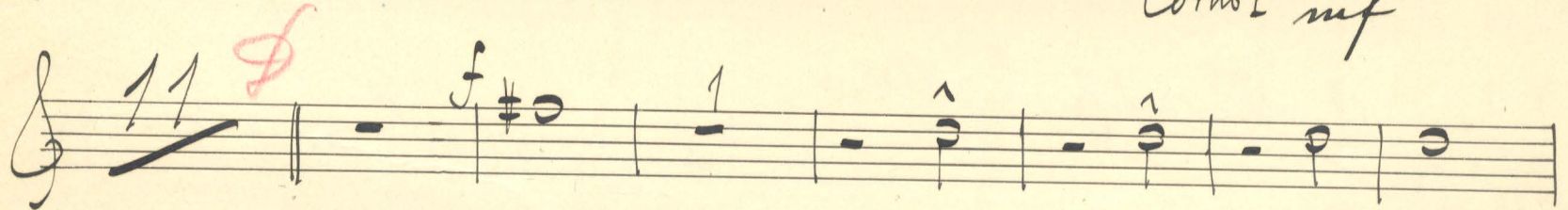
Tola Moberg

Violino I 2 1 1

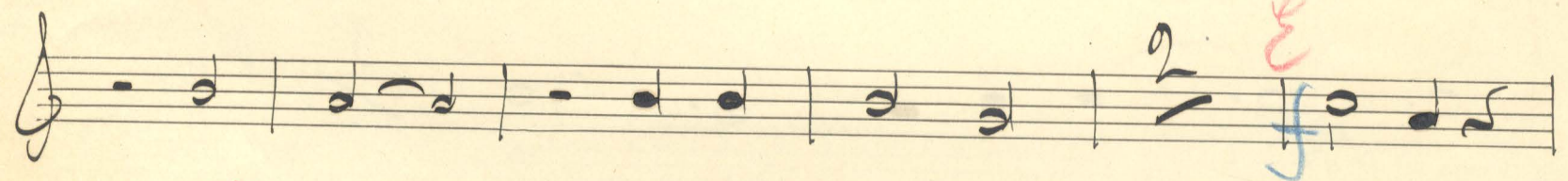


Corno I mf

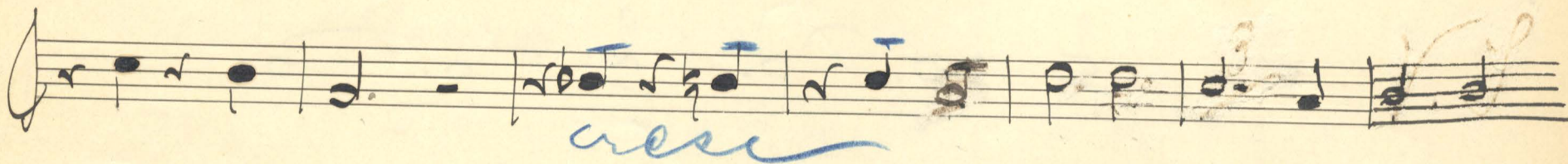
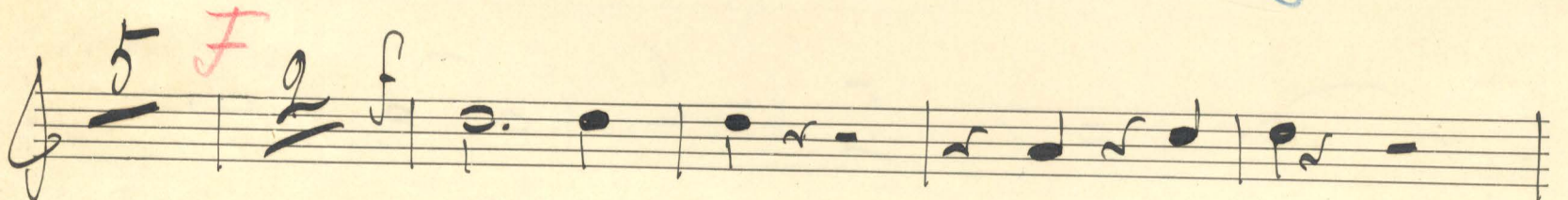
11



2 8



5 2 f



Tempo ff

v. y



Handwritten musical notation on a single staff. The notation includes notes, rests, and dynamic markings. A *ff* marking is present at the beginning, and a *sempre ff* marking is written above the staff. There are also some handwritten annotations in red ink.

Handwritten musical notation on a single staff, continuing the piece from the previous staff.

Handwritten musical notation on two staves. The top staff contains notes and rests, with a *1* marking above a note. The bottom staff contains notes and rests, with a *pp* marking above a note. There are also some handwritten annotations in red ink.

N^o 2 Præludivm

Moderato

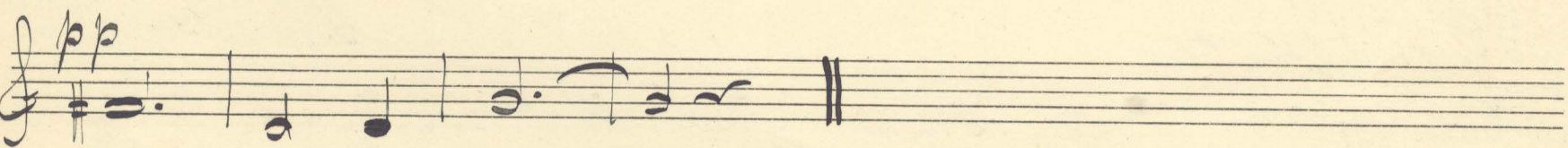
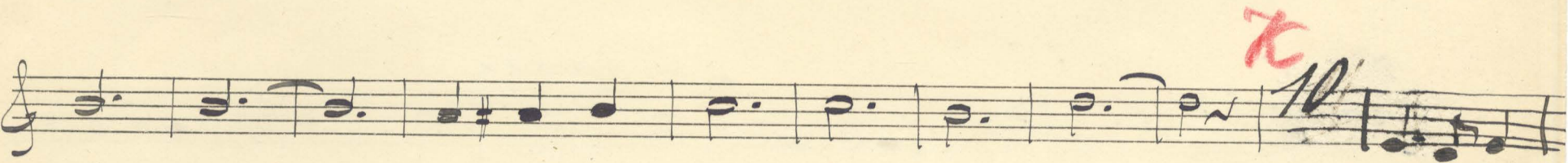
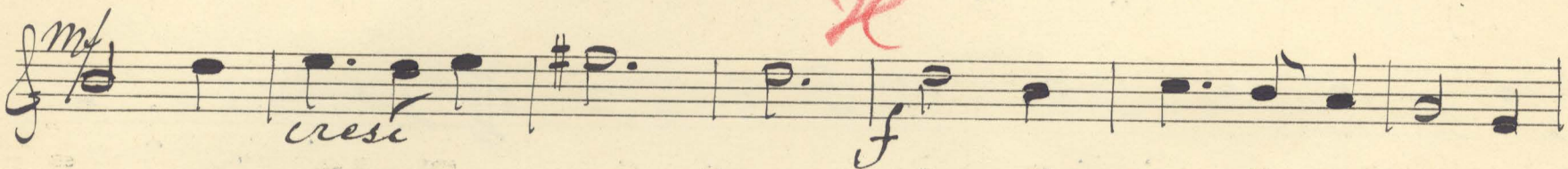
Handwritten musical notation on a single staff. The notation includes notes, rests, and dynamic markings. A *3/4* time signature is present. There are handwritten annotations in red ink: *9*, *13*, and *B^{clar. I}*. A *p* marking is present above a note, and *como I* is written below the staff.

Handwritten musical notation on a single staff. The notation includes notes, rests, and dynamic markings. There is a handwritten annotation in blue ink: *3* and *p*.

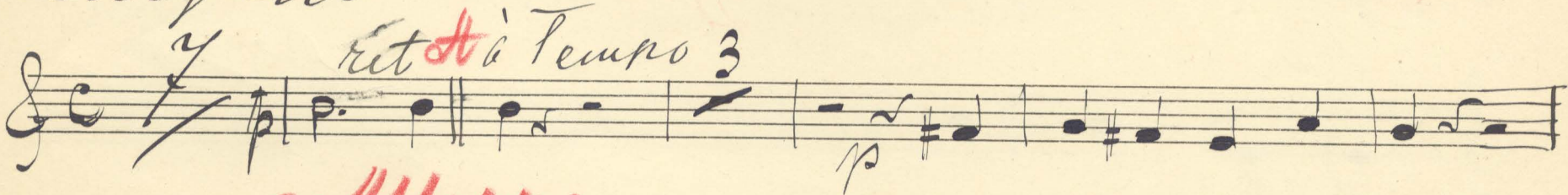
Handwritten musical notation on a single staff. The notation includes notes, rests, and dynamic markings. There are handwritten annotations in red ink: *2* and *1*. A *f* marking is present above a note.

Handwritten musical notation on a single staff. The notation includes notes, rests, and dynamic markings. There are handwritten annotations in blue ink: *2* and *2*.

Handwritten musical notation on a single staff. The notation includes notes, rests, and dynamic markings. There are handwritten annotations in red ink: *3*, *6*, *7*, and *1*. A *f* marking is present above a note. The word *crus* is written below the staff.



No 3 Aston Hillbet Tacci
Allegretto



Meno Allegro
mp *cresc* *mp* *cresc* *f*

Allegro

meno Allegro
mp

Allegro
dim *ppp*

f *cresc*

stretto *Andante*
p

pp *dim* *rit* *à tempo 1^o* *à tempo Andant*

rit *ppp*

Stillehet/Tacet