

Oboe II Suite N° 1 Schluppgang

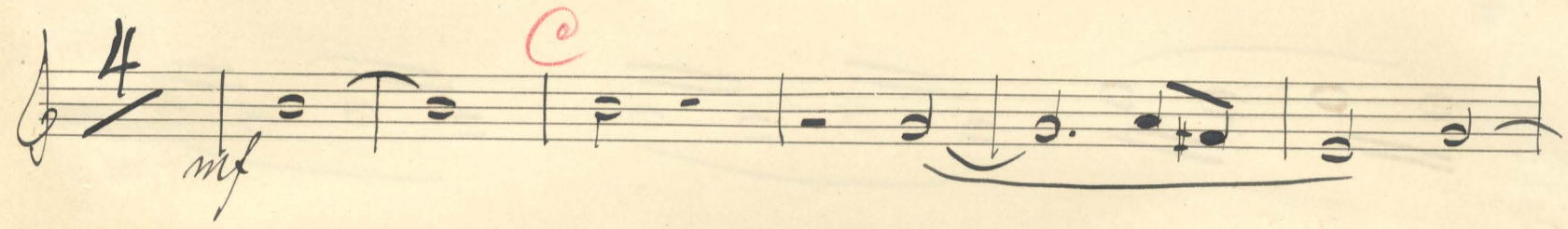
Andante

Johann Moberg

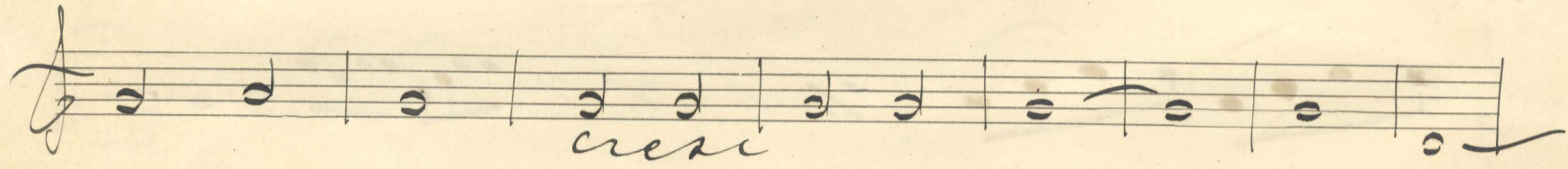
Violino 17 *A* *B* *ob II*



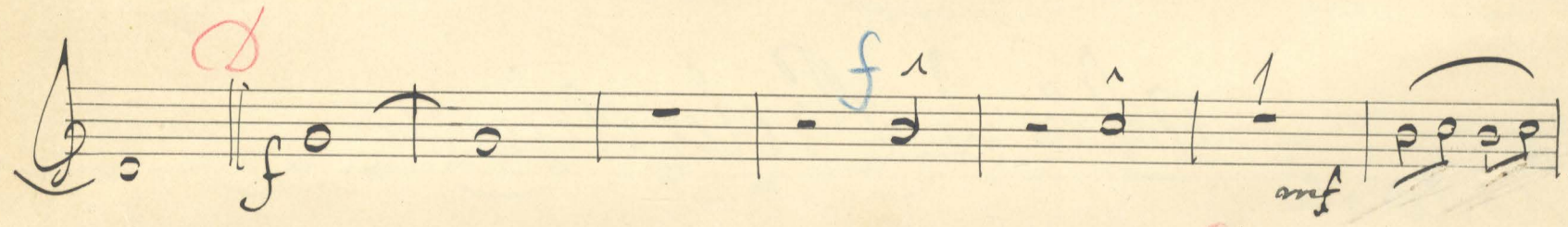
mf *4*



cresc



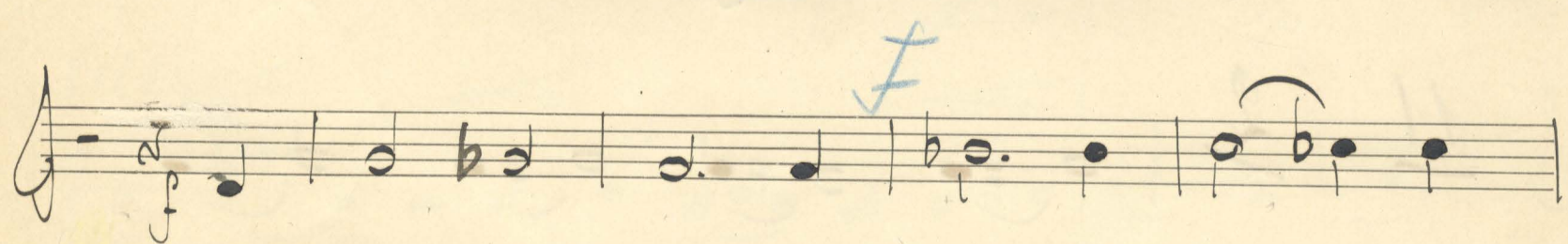
f *anf*



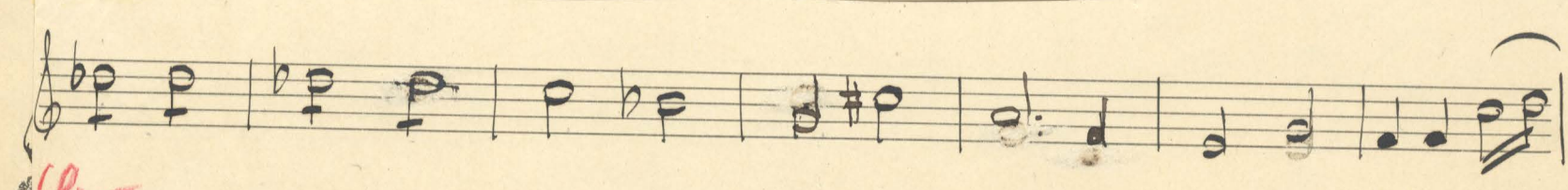
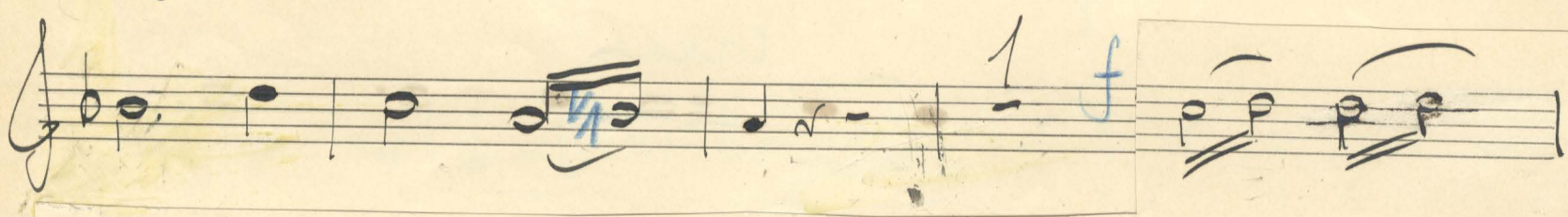
f *3*



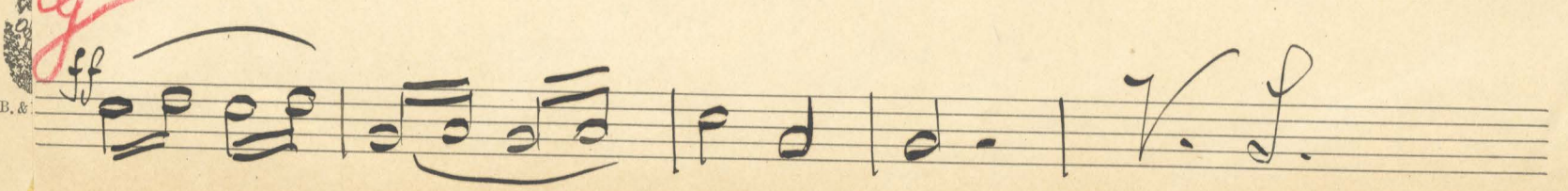
f



f



ff



Handwritten musical score on a single staff with six systems. The notation includes various dynamics and performance markings:

- System 1: *ff*
- System 2: *H*
- System 3: *2 cresc*
- System 4: *ff*
- System 5: *rit*
- System 6: *dim*, *ppp*, *M*

751

Moderato *No 2 Prelude*

Handwritten musical score for *No 2 Prelude*, featuring performance markings and fingerings:

- Staff 1: *9 A*, *13 B*, *22 D*, *Obae I*
- Staff 2: *11*, *2*, *mp*
- Staff 3: *3*, *f*, *cresc*
- Staff 4: *ff*, *4*, *16*, *20*

Handwritten musical notation on a single staff, featuring a red 'J' above the first measure. The notation includes various note values and rests.

Handwritten musical notation on a single staff, continuing the piece with various note values and rests.

Handwritten musical notation on a single staff, starting with a red 'K' and a first measure rest. The piece concludes with a double bar line and the word 'Fine'.

No. 3 ~~Allegro~~ Stillhet Tact

Handwritten musical notation on a single staff, beginning with the tempo marking 'Allegretto' and a first measure rest. It includes markings for 'rit', 'A tempo', and 'B Allegro'.

Handwritten musical notation on a single staff, featuring a triplet of eighth notes.

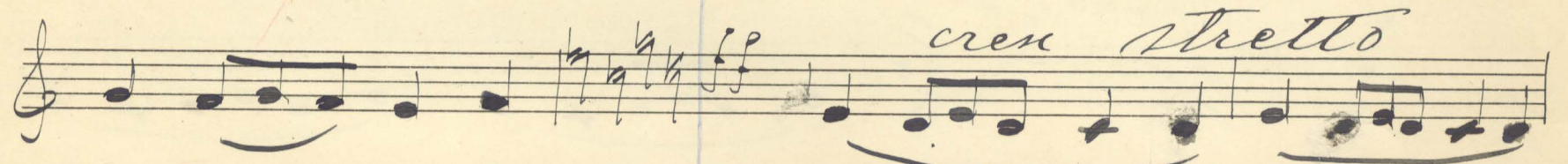
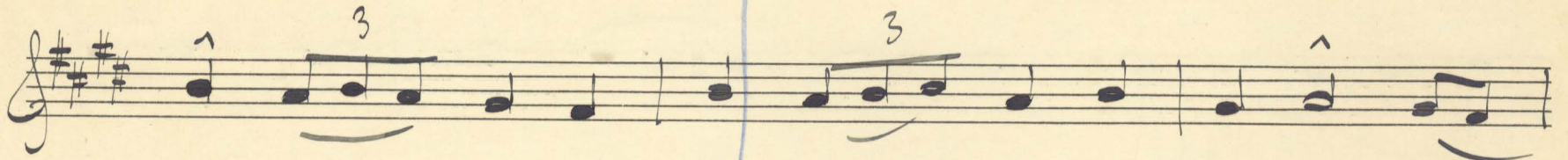
Handwritten musical notation on a single staff, including the tempo marking 'meno Allegro' and dynamic markings 'dim' and 'p'.

Handwritten musical notation on a single staff, starting with a red 'C' and the tempo marking 'Allegro'.

Handwritten musical notation on a single staff, featuring a triplet of eighth notes.

Handwritten musical notation on a single staff, including the tempo marking 'meno Allegro' and dynamic markings 'p' and 'pp'. The piece ends with a red 'D' and the initials 'A. J.'.

Allegro



Still not (Tacet)

