

Ballet

Oboe I

Ida Moberg

Moderato

21

Allegretto

Andante

31

stretto

Andante

*p* *mf*

*poco accel.*

*rit* *à tempo*

*stretto* *rit* *à tempo* *pp*

*rit* *Andante* *sf*





6

Vivo

Handwritten musical notation on a single staff. It begins with a treble clef, a key signature of two sharps (F# and C#), and a 3/4 time signature. A large red '6' is written above the staff. The word 'Fine' is written below the staff. The notation includes a whole rest followed by a series of quarter notes.

Handwritten musical notation on a single staff. It starts with a treble clef and a key signature of one flat (Bb). The notation consists of a series of quarter notes. A red '2' is written above the staff.

Handwritten musical notation on a single staff. It starts with a treble clef and a key signature of one flat (Bb). The notation consists of a series of quarter notes.

Handwritten musical notation on a single staff. It starts with a treble clef and a key signature of one flat (Bb). The notation includes a series of quarter notes and a measure with a fermata. A red '3' is written above the staff. The dynamic marking 'mf' is present.

Handwritten musical notation on a single staff. It starts with a treble clef and a key signature of one flat (Bb). The notation includes a series of quarter notes and a measure with a fermata. A red '3' is written above the staff. The dynamic marking 'f' is present.

Handwritten musical notation on a single staff. It starts with a treble clef and a key signature of one flat (Bb). The notation includes a series of quarter notes and a measure with a fermata. A red '3' is written above the staff. The dynamic marking 'mf' is present. A large red '6' is written above the staff.

Handwritten musical notation on a single staff. It starts with a treble clef and a key signature of one flat (Bb). The notation includes a series of quarter notes. The dynamic marking 'f' is present.

Handwritten musical notation on a single staff. It starts with a treble clef and a key signature of one flat (Bb). The notation includes a series of quarter notes. A red '1' is written above the staff. The dynamic marking 'f' is present.

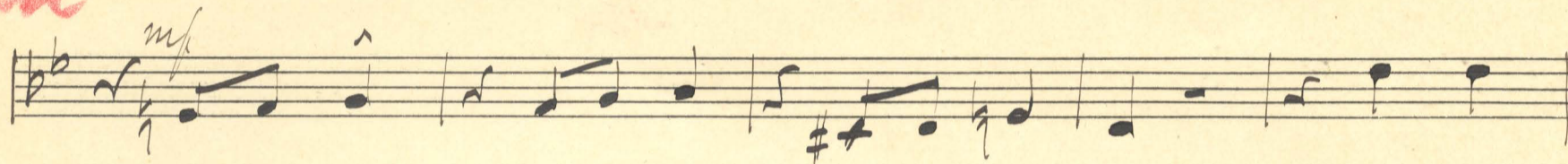
Handwritten musical notation on a single staff. It starts with a treble clef and a key signature of one flat (Bb). The notation includes a series of quarter notes. The dynamic marking 'mf' is present.

Handwritten musical notation on a single staff. It starts with a treble clef and a key signature of one flat (Bb). The notation includes a series of quarter notes. A red 'X' is written above the staff. A large red '6' is written above the staff.





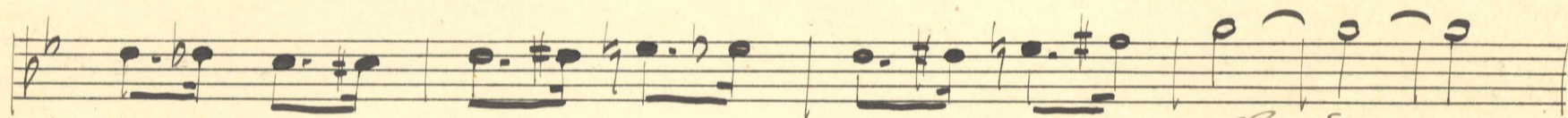
*m*



*v*



*Andante*



*Dal Segno in al fine.*

