

Ballet

Opus II

Moderato

A Andante **B**

Ida Moberg

Handwritten musical notation on a single staff, including a treble clef, a key signature of two sharps (F# and C#), and a 9/4 time signature. The notation consists of several notes and rests.

Handwritten musical notation on a single staff, including a treble clef, a key signature of two sharps, and a 3/4 time signature. The word "stretto" is written above the staff. A red circled "C" is written to the left of the staff.

Handwritten musical notation on a single staff, including a treble clef, a key signature of two sharps, and a 3/4 time signature. The word "à tempo Andante" is written above the staff. A red circled "D" is written above the staff.

Handwritten musical notation on a single staff, including a treble clef, a key signature of two sharps, and a 3/4 time signature. The word "poco accel." is written above the staff.

Handwritten musical notation on a single staff, including a treble clef, a key signature of two sharps, and a 3/4 time signature. The word "rit" is written below the staff, and "à tempo" is written above the staff.

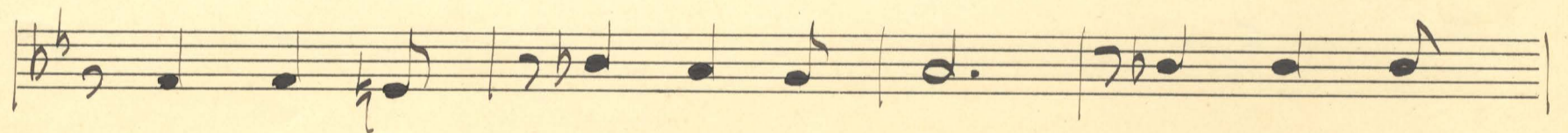
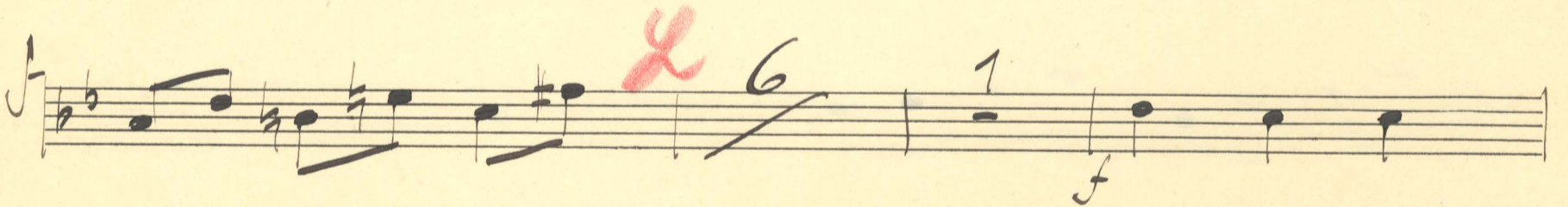
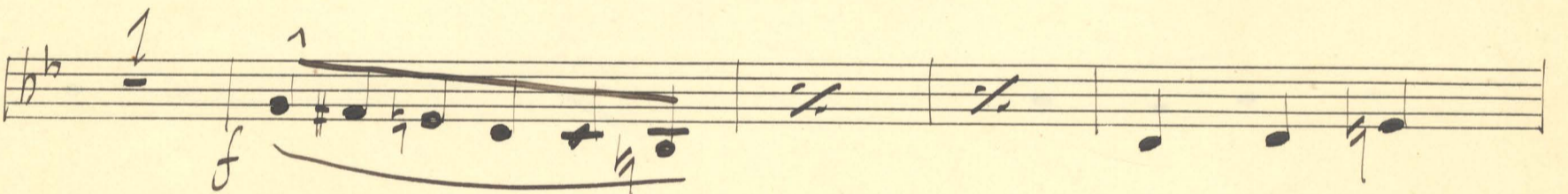
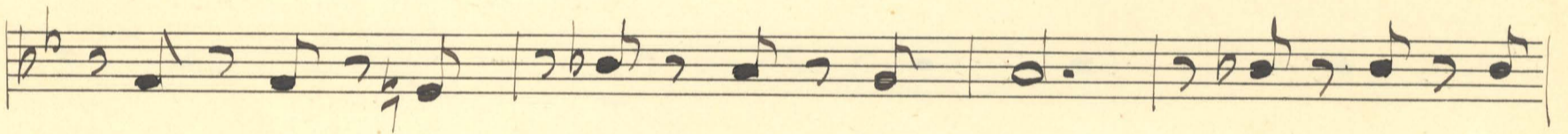
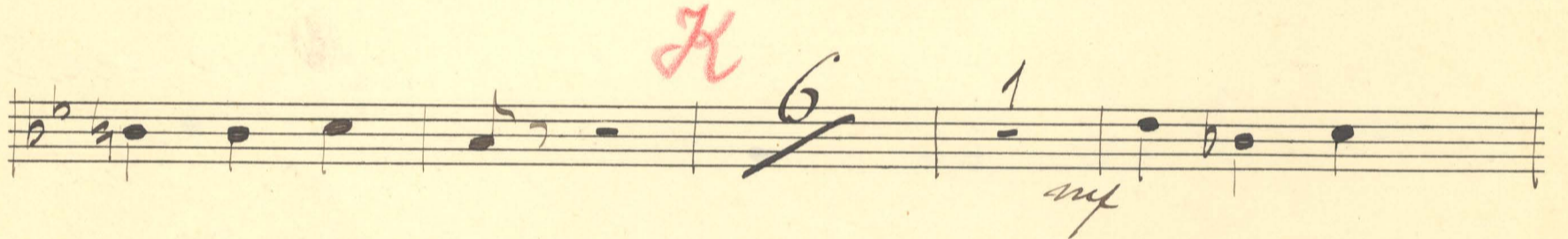
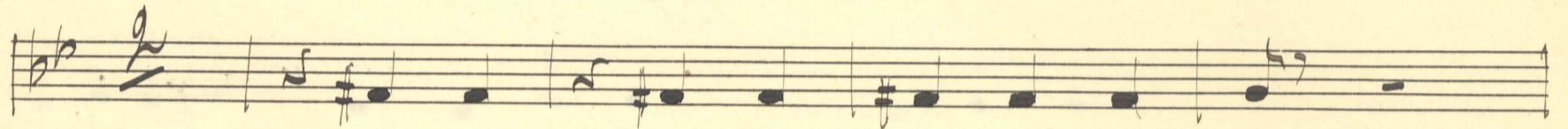
Handwritten musical notation on a single staff, including a treble clef, a key signature of two sharps, and a 3/4 time signature. The word "rit à tempo" is written above the staff. A red circled "E" is written above the staff. The dynamic marking "pp" appears twice below the staff.

Handwritten musical notation on a single staff, including a treble clef, a key signature of two sharps, and a 3/4 time signature. The word "Allegro" is written above the staff. A red circled "F" is written above the staff.

Handwritten musical notation on a single staff, including a treble clef, a key signature of two sharps, and a 3/4 time signature. The word "Andante" is written above the staff.

Handwritten musical notation on a single staff, including a treble clef, a key signature of two sharps, and a 3/4 time signature. The word "Vivo" is written above the staff. A red circled "G" is written to the left of the staff. The word "Fine" is written below the staff.

Handwritten musical notation on a single staff, including a treble clef, a key signature of two sharps, and a 3/4 time signature. A red circled "H" is written above the staff.



M

Musical staff with notes and *mf* dynamic marking.

Musical staff with notes.

N

Musical staff with notes and *f* dynamic marking.

Musical staff with notes and slurs.

Andante

Musical staff with notes and *mf* dynamic marking.

Pal Segno 2^a al Fine

Musical staff with notes and *dim* dynamic marking.

Empty musical staff.

Empty musical staff.

Empty musical staff.

Empty musical staff.