

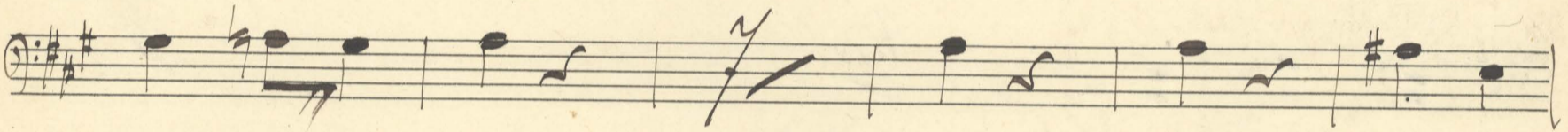
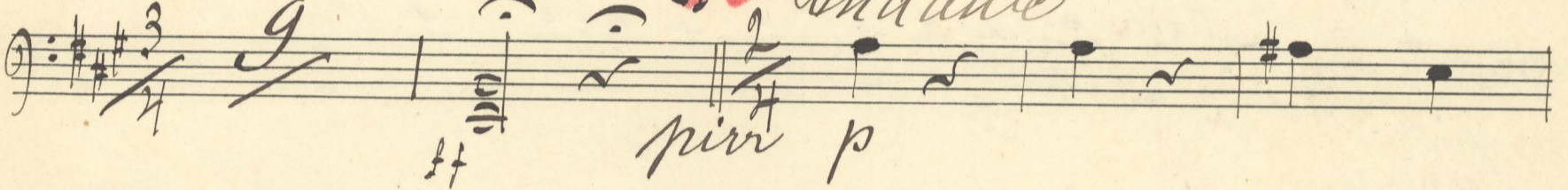
Ballet

Violoncello

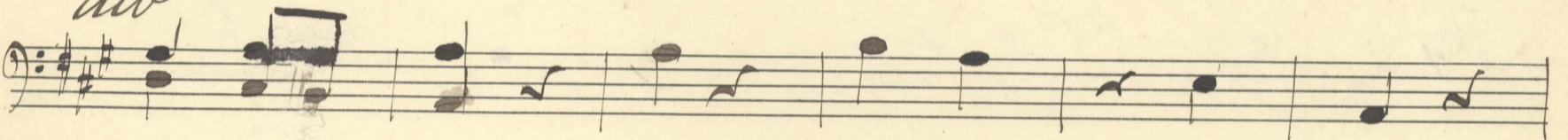
Tchaikovsky

Moderato

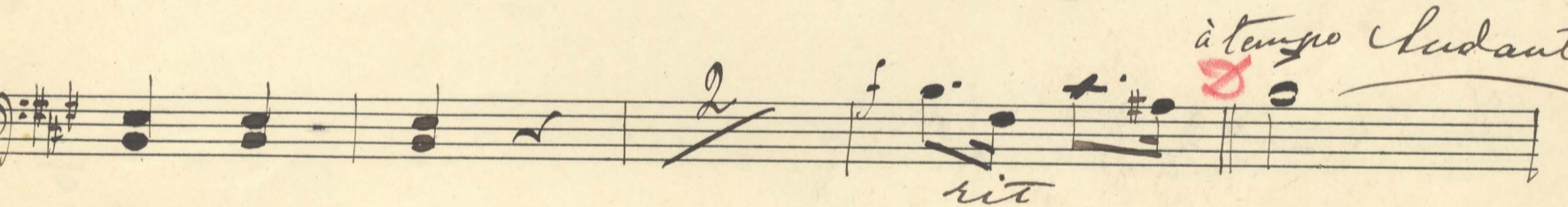
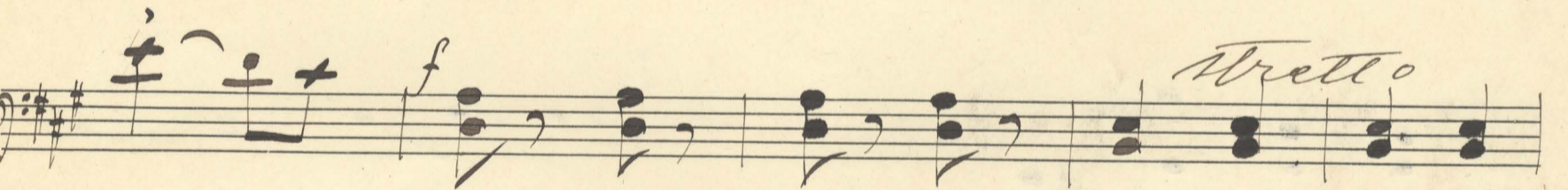
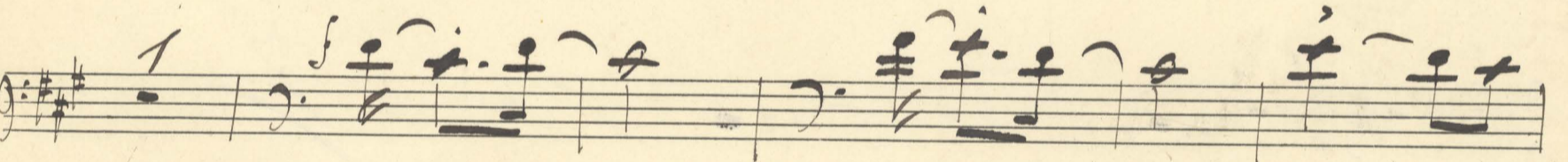
~~Andante~~ Andante



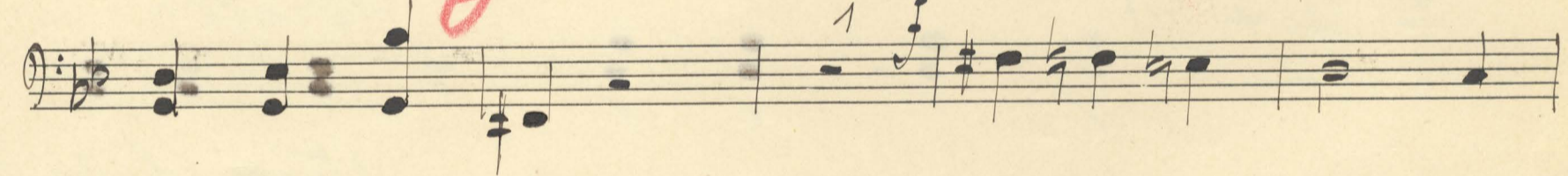
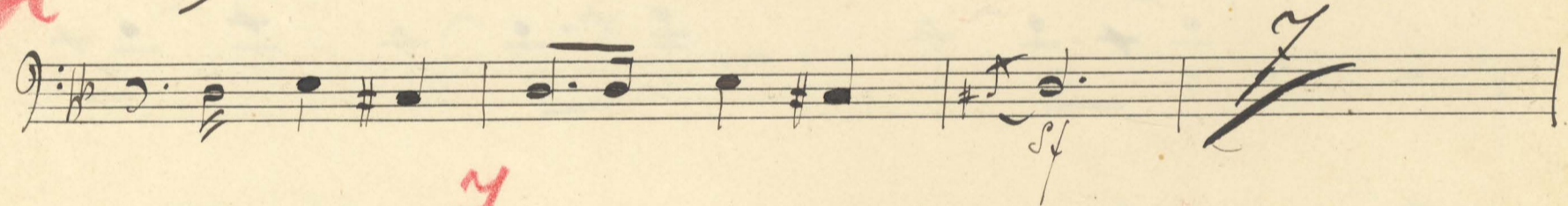
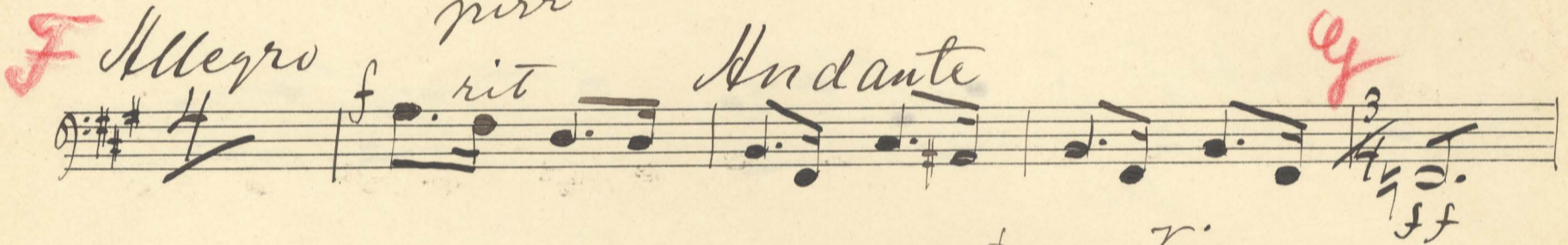
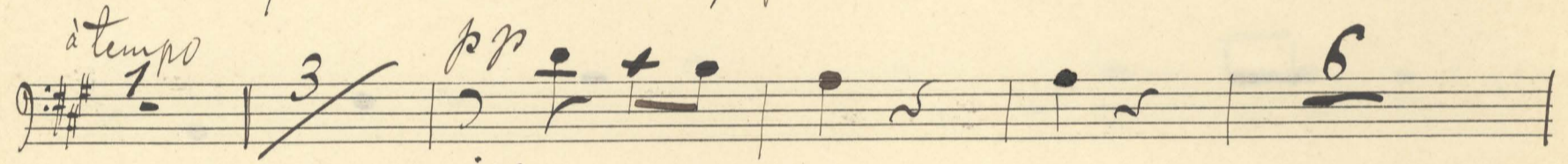
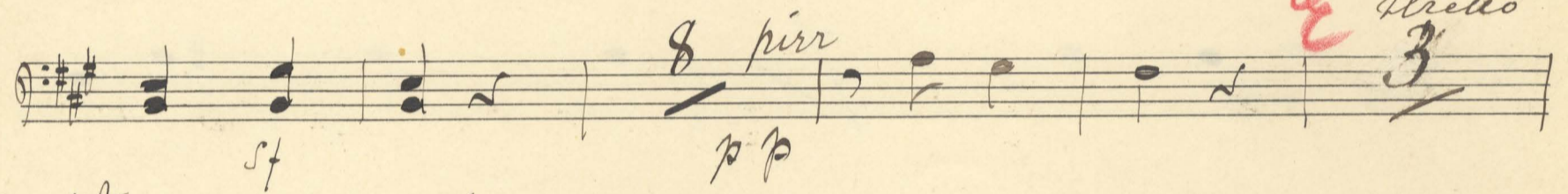
div



B Allegretto Andante



V. L.



Z *Arco* *f*

f

pp

L *arco.*

f *pp*

M *pp* *ff*

Arco *ff*

N *f* *ff* *dim* *pp* *dim*



Handwritten musical notation on a single staff, starting with a forte (*f*) dynamic marking. The notation includes various rhythmic values and accidentals.

Handwritten musical notation on a single staff. A red circled number '6' is written above the staff. The tempo is marked *Andante* and the dynamic is *sf* (sforzando). A *mp* (mezzo-piano) marking appears below the staff.

Handwritten musical notation on a single staff, continuing the piece with various rhythmic patterns.

Handwritten musical notation on a single staff. It begins with a piano (*p*) dynamic and the word *pizz* (pizzicato) below. The tempo is marked *Al Segno* and the piece concludes with the instruction *Fine*.

Seven empty musical staves, each consisting of five horizontal lines, provided for further notation.