

Accord-griffe.

C dur      C moll.      A. Dreiklänge. *f* dur.      *f* moll.      D dur.      D moll.

A dur      A moll      E dur      E moll      H dur      H moll

Fis dur      Fis moll      Cis dur.      Cis moll      As dur      As moll.

Es dur      Es moll      B dur      B moll      F dur      F moll.

C moll-dur.

Durch alle Tonarten.  
In viertönigen Dreiklanggriffen.



14. 15. 16.

17. 18.

19.

20. 21. 22.

23. 24. 25.

26.

27.

II. \*

Handwritten musical notation for the first system, consisting of two staves. The first staff begins with a treble clef and a 4/4 time signature. The word *Fine* is written above the first staff. The second staff begins with a bass clef. The word *Tagato.* is written above the second staff. The music consists of eighth and sixteenth notes.

Handwritten musical notation for the second system, consisting of two staves. The first staff begins with a treble clef and a 4/4 time signature. The number *28* and the tempo marking *Allegro (ilacipoti)* are written above the first staff. The second staff begins with a bass clef and a 2/4 time signature. The music consists of eighth and sixteenth notes.

Handwritten musical notation for the third system, consisting of two staves. The first staff begins with a treble clef and a 6/8 time signature. The number *29* and the tempo marking *Allegro (ilacipoti)* are written above the first staff. The second staff begins with a bass clef and a 6/8 time signature. The music consists of eighth and sixteenth notes.

Handwritten musical notation for the fourth system, consisting of two staves. The first staff begins with a treble clef and a 7/8 time signature. The number *30* and the tempo marking *Verschiedene Noten in beiden Händen.* are written above the first staff. The second staff begins with a bass clef and a 7/8 time signature. The music consists of eighth and sixteenth notes.

Handwritten musical notation for the fifth system, consisting of two staves. The first staff begins with a treble clef and a common time signature. The second staff begins with a bass clef and a common time signature. The music consists of eighth and sixteenth notes.

Handwritten musical notation for the sixth system, consisting of two staves. The first staff begins with a treble clef and a common time signature. The number *31* and the tempo marking *Moderato.* are written above the first staff. The second staff begins with a bass clef and a common time signature. The music consists of eighth and sixteenth notes.

32. Allegretto

Handwritten musical notation for measures 32-33. The top staff is in treble clef and the bottom staff is in bass clef. The music consists of eighth and sixteenth notes. A dynamic marking 'p.' is present in the final measure of this system.

33. Moderato. (Die halbe Takt Pause)

Handwritten musical notation for measures 33-34. The top staff is in treble clef and the bottom staff is in bass clef. The music features a half-measure rest in the top staff. Dynamic markings 'f' and 'p.' are visible.

Handwritten musical notation for measures 34-35. The top staff is in treble clef and the bottom staff is in bass clef. Measure 34 includes fingerings 1, 4, 5, 2, 5. Measure 35 includes fingerings 1, 5, 4, 2, 5, 4, 5. A dynamic marking 'f' is present.

Handwritten musical notation for measures 35-40. The top staff is in treble clef and the bottom staff is in bass clef. Measures 35-37 include fingerings: 5, 1, 3, 5, 4, 1, 2, 1; 5, 3, 1, 2, 4, 1, 2, 4; 3, 4. Measure 38 includes fingering 4. Measure 39 includes fingering 6. Measure 40 includes fingering 6. Dynamic markings 'f' and 'p.' are present.

Handwritten musical notation for measures 41-42. The top staff is in treble clef and the bottom staff is in bass clef. Measure 41 includes a dynamic marking 'f'. Measure 42 includes a dynamic marking 'f'. The notation continues with eighth and sixteenth notes.

A small, separate handwritten musical notation fragment at the bottom right of the page, consisting of a single staff with several notes.

42. Allegretto.

cremny

Handwritten musical notation for measures 42 and 43. The top staff is in treble clef with a 3/8 time signature. The bottom staff is in bass clef. Dynamic markings include *p*, *f*, *<*, and *x*. A repeat sign is present at the end of measure 43.

Handwritten musical notation for measures 44 and 45. The top staff is in treble clef. The bottom staff is in bass clef. A repeat sign is present at the end of measure 45.

Handwritten musical notation for measures 46 through 53. The top staff is in treble clef. The bottom staff is in bass clef. Measure numbers 46, 47, 48, 49, 50, 51, 52, and 53 are written above the notes.

Handwritten musical notation for measures 54, 55, and 56. The top staff is in treble clef. The bottom staff is in bass clef. Measure numbers 54, 55, and 56 are written above the notes.

Handwritten musical notation for measures 57 and 58. The top staff is in treble clef. The bottom staff is in bass clef. Measure numbers 57 and 58 are written above the notes.

Handwritten musical notation for measure 59. The top staff is in treble clef. The bottom staff is in bass clef. Measure number 59 is written above the notes.

60.

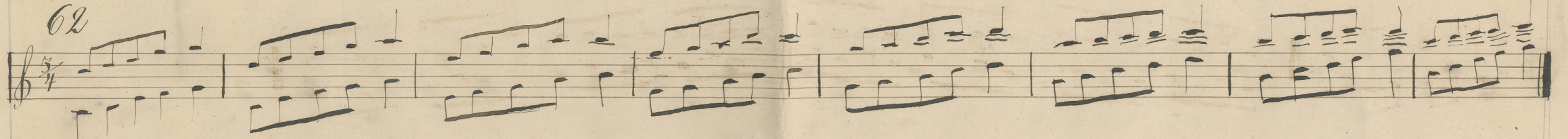
61. Allegretto.

C h a g a h c

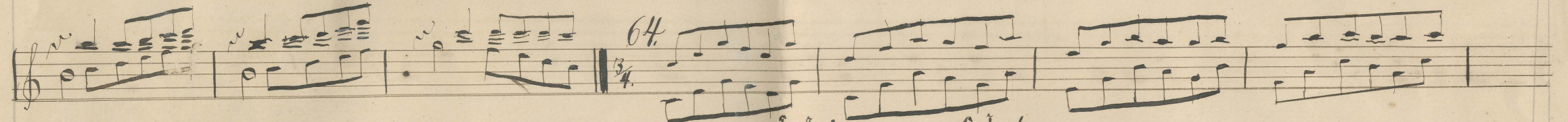
112



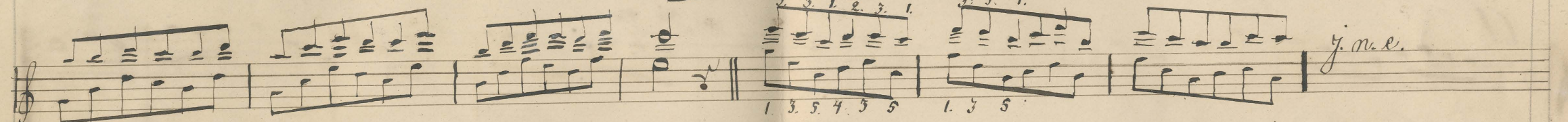
62



63



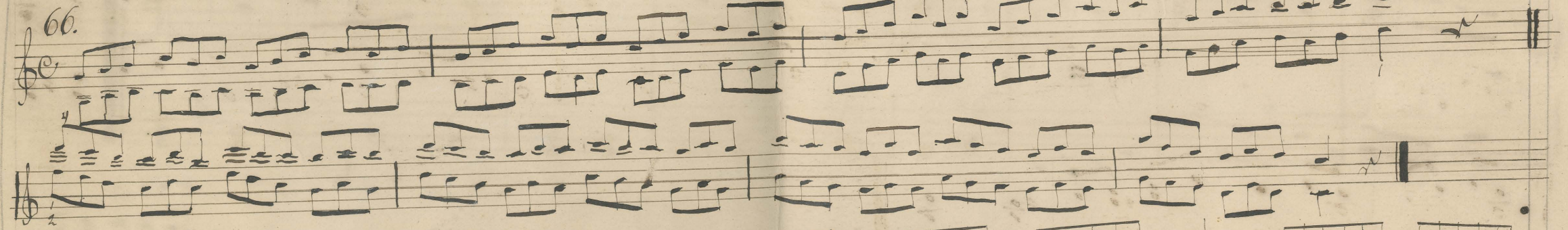
64



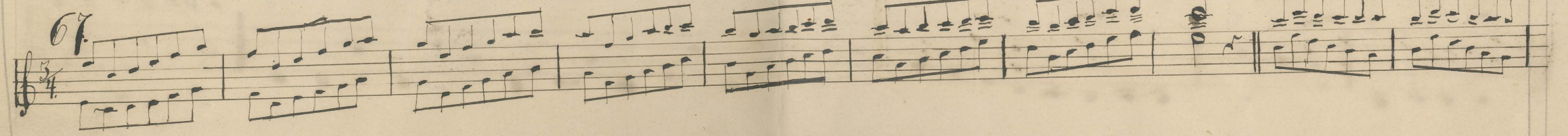
65 *Triolet*



66



67





Handwritten musical notation for measures 68 and 69. Measure 68 is in 3/4 time with a key signature of one sharp (F#). Measure 69 is in 2/4 time with a key signature of one sharp (F#). The notation includes treble and bass staves with various rhythmic values and fingerings.

Handwritten musical notation for measures 70 and 71. Measure 70 is marked "Vivace" and is in 3/4 time with a key signature of one sharp (F#). Measure 71 is in 2/4 time with a key signature of one sharp (F#). The notation includes treble and bass staves with various rhythmic values and fingerings.

Handwritten musical notation for the vocal line, marked "Moderato". The key signature is one sharp (F#) and the time signature is 2/4. The lyrics are written below the notes.

*Moderato.*

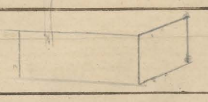
Ehto tulee, ilta gautuu, illo linnat kaulaa. Minä lennan löyhähtien Kullalleni Kaulaan.

Handwritten musical notation for the piano accompaniment, corresponding to the lyrics in the previous block. The key signature is one sharp (F#) and the time signature is 2/4.

Minä lennan löyhähtien Kullalleni Kaulaan.

*Läpikuunneltava.*

Waltz



*Walszi.*

Handwritten musical notation for the first system of a waltz. The system consists of a treble staff and a bass staff. The treble staff contains a melodic line with numerous fingerings (1-5) and slurs. The bass staff contains a harmonic accompaniment with chords and single notes. The system concludes with a double bar line and the word "Fine." written above the staff.

Handwritten musical notation for the second system of a waltz. The system consists of a treble staff and a bass staff. The treble staff contains a melodic line with fingerings and slurs. The bass staff contains a harmonic accompaniment. The system concludes with a double bar line.

Handwritten musical notation for the third system of a waltz. The system consists of a treble staff and a bass staff. The treble staff contains a melodic line with slurs. The bass staff contains a harmonic accompaniment. The system concludes with a double bar line.

Handwritten musical notation for the fourth system of a waltz. The system consists of a treble staff and a bass staff. The treble staff contains a melodic line with slurs. The bass staff contains a harmonic accompaniment. The system concludes with a double bar line. To the right of the system, the title "Suramietinen Choral" is written in a decorative script, with the tempo marking "Andante." written above it.

Handwritten musical notation for the fifth system of a waltz. The system consists of a treble staff and a bass staff. The treble staff contains a melodic line with slurs. The bass staff contains a harmonic accompaniment with fingerings. The system concludes with a double bar line.

*Prin Marssi*

A handwritten musical score for a piece titled "Prin Marssi". The score is written on eight systems of two staves each, using a grand staff format with treble and bass clefs. The key signature is one flat (B-flat) and the time signature is common time (C). The notation includes various rhythmic values such as eighth and sixteenth notes, often beamed together, and rests. There are several dynamic markings, including "ff" (fortissimo) and "p" (piano), and some articulation marks like "x" and "o". The paper shows signs of age, including some staining and foxing.

*Capran*

*Suomen laulus*

Handwritten musical notation for the first system of 'Suomen laulus'. It consists of two staves: a treble clef staff on top and a bass clef staff on the bottom. The key signature is one sharp (F#) and the time signature is 2/4. The music features a melody in the treble staff and a supporting bass line in the bass staff.

Handwritten musical notation for the second system of 'Suomen laulus'. It consists of two staves: a treble clef staff on top and a bass clef staff on the bottom. The key signature is one sharp (F#) and the time signature is 2/4. The music continues from the first system.

*Hambo. Polska från upland.*

Handwritten musical notation for the first system of 'Hambo. Polska från upland.'. It consists of two staves: a treble clef staff on top and a bass clef staff on the bottom. The key signature is one sharp (F#) and the time signature is 2/4. The music is characterized by a rhythmic melody in the treble staff and a bass line with many beamed eighth notes.

Handwritten musical notation for the second system of 'Hambo. Polska från upland.'. It consists of two staves: a treble clef staff on top and a bass clef staff on the bottom. The key signature is one sharp (F#) and the time signature is 2/4. The music continues from the first system.

*Andante espressivo.*

*Toivoton rakkaus*

Handwritten musical notation for the first system of 'Toivoton rakkaus'. It consists of two staves: a treble clef staff on top and a bass clef staff on the bottom. The key signature is one sharp (F#) and the time signature is 2/4. The tempo is marked 'Andante espressivo'. The music features a melody in the treble staff and a bass line with many beamed eighth notes.

*Napoleon Marsch.*

Handwritten musical notation for the first system of the *Napoleon Marsch*. It consists of two staves: a treble clef staff with a key signature of two flats and a common time signature, and a bass clef staff with the same key signature and time signature. The music features rhythmic patterns and melodic lines.

Handwritten musical notation for the second system. The treble clef staff begins with the instruction *p. dolce*. The music continues with various rhythmic and melodic figures.

Handwritten musical notation for the third system, showing further development of the piece's themes.

Handwritten musical notation for the fourth system, including the instruction *p. dolce* in the treble clef staff.

Handwritten musical notation for the fifth system, which includes the instruction *Wals* written above the treble clef staff. The system is marked with numbers 1, 2, 3, 4, and 5 above the notes.

Handwritten musical notation for the sixth system, continuing the piece with various rhythmic patterns.