



Sibelius - Akatemian Kirjasto

Osasto

K

N:o

1026

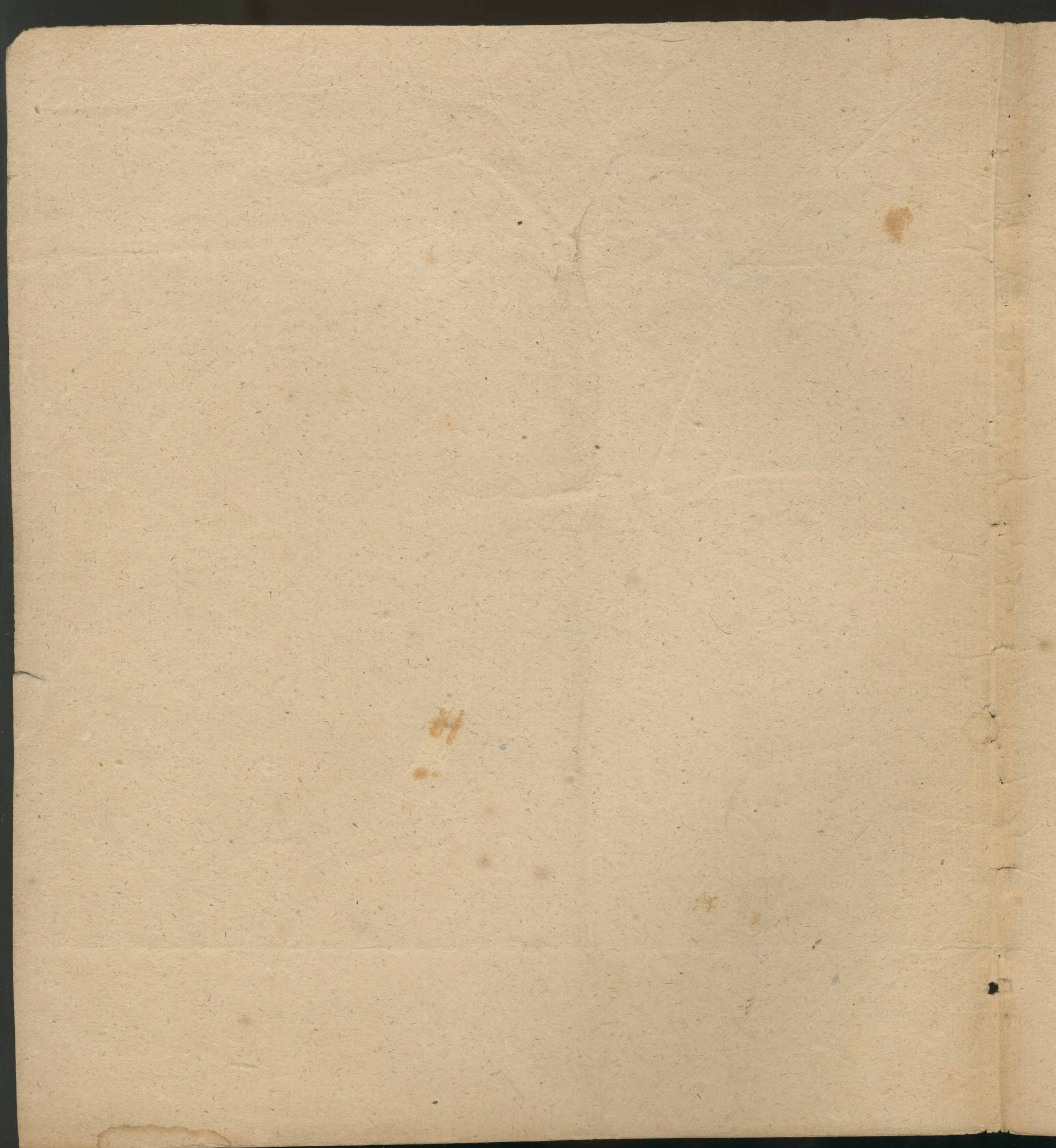
Jungelius, A. G.

Palatsset (partitur)

W 18

Partitur till Palatset.

av Musiken af A. G. Ingelius



Allo. maestoso

Flauti

Clarinetto in C.

Fagotto
Fagotto

Corni in C.

Violino I.

Violino II.

Viola

Violoncello e Basso.

p

mf

sf

mf

f. f.

A handwritten musical score on aged, yellowed paper. The score consists of approximately 15 staves of music. The notation includes various rhythmic values, accidentals, and dynamic markings. Key markings include *mf* (mezzo-forte), *p.* (piano), *crca*, *po. c.* (poco cres.), and *a.* (allegro). There are also some handwritten notes in the left margin, such as *Andante* and *Allegro*. The paper shows signs of age, including some staining and discoloration.

Flauto 1.

Flauto 2.

Clar.

Francoes Fagotto

This page of a handwritten musical score contains 14 staves. The top four staves are labeled 'Flauto 1.', 'Flauto 2.', 'Clar.', and 'Francoes Fagotto'. The notation includes various musical symbols such as notes, rests, and dynamic markings like 'p.' and 'f.'. The score is written in a cursive, handwritten style on aged paper.

Flauti

Tutti
p^{ff}

Clarinetti

P.

Cresc.

Tromboni

Cori 15.

P.

Cresc.

lois

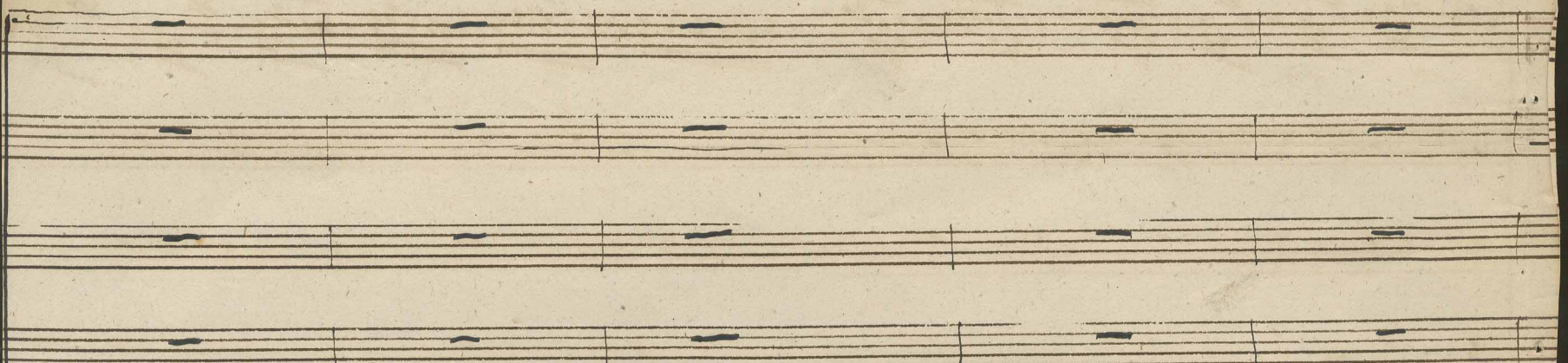
sf

sf

P

Handwritten musical score for the first system. The top staff contains a complex melodic line with many accidentals and rests. Below it are several empty staves, suggesting a multi-staff instrument or a score for multiple parts.

Handwritten musical score for the second system. It includes parts for 'Corni' (Horns) and 'Vello solo' (Violoncello solo). The score features various musical notations, including dynamics like *sf* (sforzando) and *p* (piano), and markings such as '2.' and 'bis'. The bottom staff is labeled 'Corni' and the middle staff is labeled 'Vello solo'.



Cresc.

ff

p. sempre

Flauti

This is a handwritten musical score for a section of a symphony, featuring Flutes and Violins. The score is written on ten staves, with the top two staves for Flutes and the remaining eight for Violins. The music is in a key with one sharp (F#) and a common time signature (C). The score includes various musical notations such as notes, rests, and dynamic markings. Key markings include *p.* (piano) at the top, *pizz* (pizzicato) in the second and fourth staves, *Vc. solo* (Violin solo) in the fourth staff, *mf* (mezzo-forte) in the fifth and sixth staves, *sf* (sforzando) in the sixth and seventh staves, and *arco* (arco) in the eighth and ninth staves. The handwriting is in dark ink on aged, slightly yellowed paper.

Flauti

Cl. 28

Tromb.

28

Cori 28

ppz

cresc

arco

con

f. a due.

Sf

P

cresc.

pois

a

pois

This is a page of handwritten musical notation for a symphony orchestra. The score is arranged in systems, with woodwinds at the top and strings at the bottom. The instruments listed are Flauti (Flutes), Cl. (Clarinets), Tromb. (Trumpets), and Cori (Corianders). The music is written in a common time signature and features a variety of dynamics and performance markings. Key markings include *mf* (mezzo-forte), *f* (forte), *ppz* (pianissimo), *cresc* (crescendo), *arco* (arco), *con* (con), *f. a due.* (forte a due), *P* (piano), *cresc.* (crescendo), *pois* (poco), and *a poco* (a poco). The notation includes various note values, rests, and articulation marks, with some sections showing complex rhythmic patterns and dynamic shifts.

f

This is a page of handwritten musical notation on aged, yellowed paper. The score consists of approximately 15 staves of music. The notation includes various rhythmic values, accidentals, and dynamic markings. Key features include:

- Dynamic Markings:** The piece begins with a forte (*f*) marking. A fortissimo (*ff*) marking appears in the middle section, and a piano (*p*) marking is used in the lower sections.
- Complexity:** The notation is dense, particularly in the upper staves, with many beamed notes and complex rhythmic patterns.
- Staffing:** The staves are arranged in a traditional system, with some staves containing rests or simpler rhythmic accompaniment.
- Handwriting:** The ink is dark, and the handwriting is characteristic of 18th or 19th-century musical manuscripts.

This image shows a page of handwritten musical notation on aged, yellowed paper. The score is organized into approximately 15 horizontal staves. The notation includes various musical symbols such as notes, rests, beams, and slurs. Several dynamic markings are present, including *f* (forte), *sf* (sforzando), *arco* (arco), and *p* (piano). The handwriting is in dark ink, and the paper shows signs of age, including some staining and discoloration. The overall appearance is that of a historical manuscript or a composer's draft.

This image shows a page of handwritten musical notation on aged, yellowed paper. The score is organized into several systems, each consisting of multiple staves. The notation includes various musical symbols such as notes, rests, and accidentals. Key features include:

- Dynamic markings:** *f* (forte), *p* (piano), *mp* (mezzo-piano), and *sf* (sforzando).
- Tempo/Character markings:** *And* (Andante) and *Cruc* (Crescendo).
- Staff 1:** Features a melodic line with a *f* marking at the beginning and a *p* marking later, with the word *And* written above.
- Staff 2:** Continues the melodic line.
- Staff 3:** Shows a complex texture with many notes, possibly a keyboard accompaniment.
- Staff 4:** Another melodic line with a *p* marking.
- Staff 5:** Continues the melodic line with a *f* marking.
- Staff 6:** Features a *mp* marking and a *sf* marking.
- Staff 7:** Shows a melodic line with a *sf* marking.
- Staff 8:** Continues the melodic line.
- Staff 9:** Shows a melodic line with a *f* marking.
- Staff 10:** Continues the melodic line.
- Staff 11:** Shows a melodic line with a *f* marking.
- Staff 12:** Continues the melodic line.

mf

pp

mf

crest

ff

crest

ff

This is a page of handwritten musical notation on aged, yellowed paper. The score consists of approximately 12 staves. The notation includes various rhythmic values, accidentals, and dynamic markings. The first staff begins with a *mf* marking. The second staff has a *pp* marking. The third staff has a *mf* marking. The fourth staff has a *pp* marking. The fifth staff has a *mf* marking. The sixth staff has a *pp* marking. The seventh staff has a *mf* marking. The eighth staff has a *crest* marking. The ninth staff has a *ff* marking. The tenth staff has a *crest* marking. The eleventh staff has a *ff* marking. The twelfth staff has a *crest* marking. The score is written in a cursive, handwritten style. There are some ink smudges and stains on the paper, particularly in the lower right quadrant. The right edge of the page shows the binding of the book.

Thos. Angleton Esq.

