

Violino.

# TRIO.

für  
VI. Vla., und Va.

ERKKI MELARTIN. op. 133.

Andante

5

10

15

20

25

30

35

f dolce rall. a tempo

rall. lunga Allegro dim. f

f2

mf p pp f

dim. P cant. f

p subito

dim. f2

f2 dim.

mp < cresc. cant. f

f2

f2

V.S.



Mc 3.13-Fe  
40.024/a

2.

*dolce*  
 Musical staff with treble clef, key signature of one sharp (F#), and time signature of 3/4. It begins with a *p* dynamic. The first measure contains a whole note chord (F#, C, G). The melody consists of eighth notes, with several triplet markings (3) and slurs. A *v* (accents) marking is present above the eighth measure. A box containing the number 40 is located above the final measure.

Musical staff with treble clef, continuing the melody from the previous staff. It features triplet markings and a slur. A box containing the number 45 is on the left. The staff concludes with a whole note chord (F#, C, G) and the instruction *più dim.*

Musical staff with treble clef, containing a continuous sixteenth-note accompaniment. It starts with a *ppp* dynamic. A box containing the number 50 is positioned above the staff.

Musical staff with treble clef, continuing the sixteenth-note accompaniment. It includes the markings *poco cresc.* and *sempre cresc.*

Musical staff with treble clef, featuring a series of chords. It includes the marking *marc.* (marcato).

Musical staff with treble clef, containing chords and a melodic line. It includes the marking *cant.* (cantabile) and a *mp* dynamic. A box containing the number 55 is on the left.

Musical staff with treble clef, featuring a continuous eighth-note accompaniment with triplet markings (3). A box containing the number 60 is above the staff.

Musical staff with treble clef, containing chords and a melodic line. It includes *mp* and *mf* dynamics and triplet markings.

Musical staff with treble clef, featuring a melodic line with triplet markings. It includes the marking *cant.* and *dim.* dynamics. A box containing the number 70 is above the staff.

Musical staff with treble clef, containing a melodic line with triplet markings. It includes the marking *dolce*. A box containing the number 75 is above the staff.

Musical staff with treble clef, featuring chords. It includes the markings *pizz* (pizzicato) and *arco* (arco). Dynamics include *pp* and *pp*. A box containing the number 80 is on the left.

Musical staff with treble clef, containing a continuous eighth-note accompaniment with triplet markings (3).

3 3 3 3 pizz [85] arco tram tram tram tram

> leggero 3 3 3 3 3 3 [90]

3 3 > f fz. fz

[95] cant.

pizz [100] cresc.

arco f

[105] 3 3 dim. q PPP

[110]

[115] rallent. morendo Andante dolce

rit. lunga p

V.S.

4.

VI.

*Allegretto tranquillo* [120]

*cant.*

*p semplice*

[125]

*dim.* *pp*

*cant.*

*mf* *fz* [130]

[135] *rit.* *f*

*lunga*

*gliss*

*p* *f* *p* *f* *fp* *fff*

II.

*Andante funebre*

*mp*

[5] *mf* *cresc.* *p subito* *pp* *ritard.*

*a tempo*

*mf* *fz* [10]

*a tempo* *f* [15] *p* *pp* *rit.*

*f pesante* *ff fz* [20] *mf* *p* *f*

*più f* *ff* *f*

25 *rallent.* *a tempo dolce*

*mp* *p* *fz* *cresc.*

30 *mf* *cresc.* *f* *String. poco*

35 *rall.* *ritard.* *f* *a tempo*

40 *f* *dolciss.* *p sub.*

*cresc.* *mf* *dim.*

45 *Cant. assai* *rit.*

*Poco meno mosso* *espr.* *f sub.* *molto dim.* *p*

50 *f sub.* *p* *dim.* *rallent.*

55 *p* *pp* *ppp*

III.

PRESTO.

(cello) *b*

1. *f*

5

10 *fz* *dim.* *f* *p* *f*

15

20 *p* *mp* *f* *dim.* *v sp*

25

30 *cant.* *fz* *dim.* *fz* *dim.*

35

40 *fz* *fz*

45

50 *b* *fz* *dol. espr.* *ppp*

55

60 *p* *cresc.* *f*

65

70 *p* *cresc.* *mf* *mp* *dim.*

75 *pp* *f* *marc.* *f*

80 *ff*

85

90 *ffz*

95 *ffz* *b* *100* *fz*

*lunga* *attacca*

*Tempo di minuetto* *pizz* *p* 5

10 *mp cresc.*

15 *mf* *p* *f sub.* *p*

20 *rit.* *atempo* *f molto dim.* *p*

25

30 *dim.* *Presto (tempo 1<sup>o</sup>)* *f* *v*

5 10

15 20 *fz* *p* *f* *p* *f* *p*

25 *v sp* *f* *dim.*

30 4

v.s.

*dolce* 35  
 ppp *cresc.*

*p* *cresc.* 45 *f* *p* *cresc.*

50 *mf* *dim.*

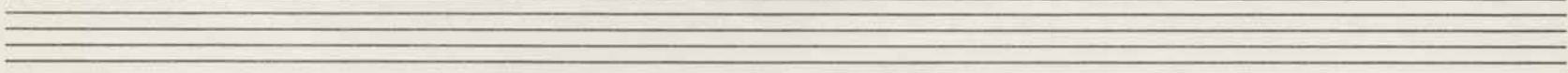
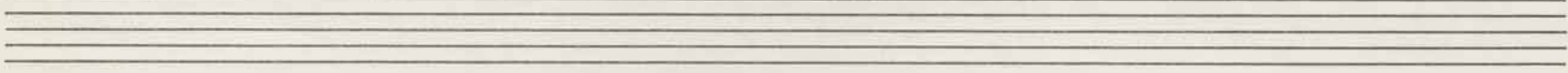
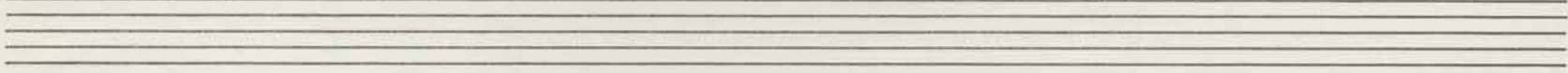
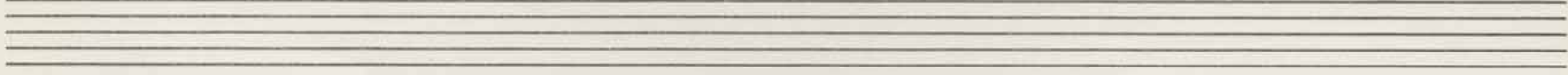
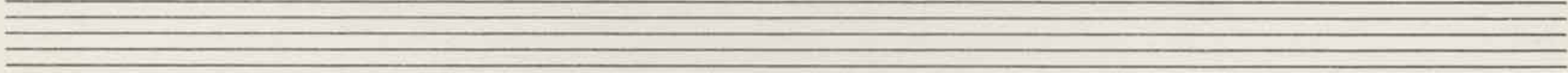
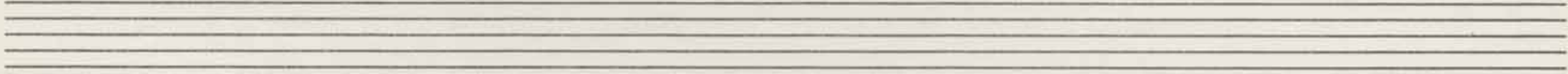
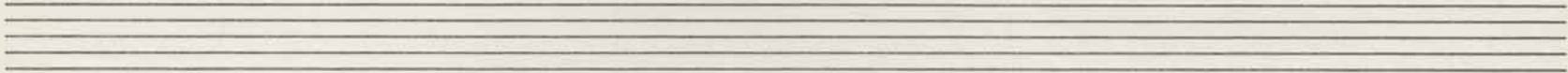
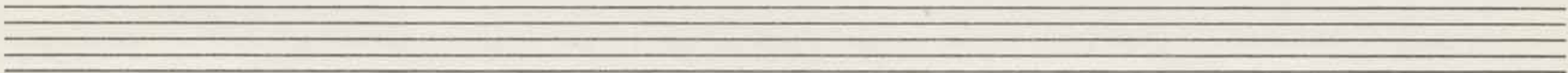
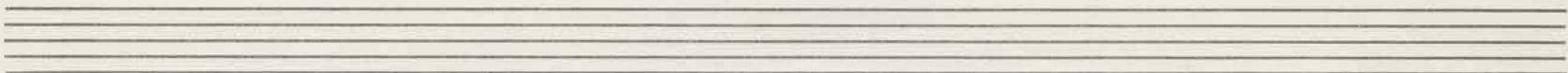
55 *f* *marc.* *fz* 60 *fz*

65 *fff subito*

70 *ffz*

75 *ffz* *(tempo)* 80 *fff*





# FINALE.

Vivace.

ff dim. pp cresc. 5

f 10 15

ff (4) rit. atempo f

20 25 30 35

f p mp f mf cresc.

40 cant. p

45 50 55

60 (Tempo I) ff

65 70 dim.

75 mf

Musical score for Violin, measures 80-105. The score is written on a single staff in treble clef. It features a series of sixteenth-note patterns, often beamed in groups of four. Measure 80 is marked with a box containing '80'. Measure 85 is marked with a box containing '85'. Measure 90 is marked with a box containing '90' and includes the instruction 'f cant.'. Measure 95 is marked with a box containing '95' and includes the instruction 'rinf.'. Measure 100 is marked with a box containing '100' and includes the instruction 'pizz'. Measure 105 is marked with a box containing '105' and includes the instruction 'ff'. A triplet of eighth notes is indicated by a '3' over the notes in measure 105. The score concludes with a double bar line.

V. S.

110 arco *cresc.* *mf* Cant. *p*

115 *mp* *cresc.* *f* *mf* *fz*

120 *mf* Cant. *f marc.* *fz*

125 *mf* Cant. *fz*

130 *f marc.* *fz*

135 *dim.* *ff* *p*

140 *ff* *p*

145 *ff* *p*

150 *ff* *mf*

155 *mf*

160 *f* *mf* *ponticello* *ppp*

165 *(non cresc.)* *cresc. sempre*

170 *cresc. sempre*

175 *f* *fz* *ff* *fz*

180 *fz*

185 *f* *f*

190 *f* *dolce* *pp*

195 *(rall.)*

200 *dim.*

210 *ppp*

215

220 *dim.*

225 *p cresc.*

230 *fz mf dim. p cresc.*

235 *p*

240

245

250 *Presto*

*fff*

255 *fz*

260

265 *fz ffe*

270

275 *fz*

280 *dim. p rall.*

V.S.

Tempo I<sup>o</sup> 285

*f* *pp* *mp* *mp* *mp* *p* *semplice* *p* *p* *p* *p*

290 *Audantino* 295

*mp* *espr.* (*semplice*) *mp*

300

*pp*

305 1 || K. Katrama. - 69.



