

ALTO.

TRIO.

für  
Viol. Alto und Cello

ERKKI MELARTIN, op.  
133.

Andante

*f*

*dolce rall.*

*p*

*atempo*

*f*

5 *rall.*

*mf*

*p*

*pp*

*lunga*

Allegro

*f*

*fz*

10 *Leggiero*

*dim.*

*p*

*cresc.*

*f*

*sub.p*

15 *f marc.*

20

*dim.*

25 *mp*

*cresc.*

30 *mf*

*p*



Mc 3.13-Fe  
40.024/b

35 *f* *dim.* *ppp*

40

45 *dim.*

45 *piu dim.* *ppp*

45 *poco cresc.*

50 *sempre cresc.*

55 *f* *fz* *marc.*

55 *cant.* *fz*

60 *dim.*

65 *f* *p*

70 *dim.* *pizz* *p*

75 *(pizz)* *pp*

arco

80

pp

pizz

85

ppp

Leggiero arco

90

p

f

95

fz

dim.

100

105

marc.

dim.

ppp

110

115

rallent.

Andante

rit.

lunga

morendo

p

V.S.

Allegretto tranquillo

Tempo 1<sup>o</sup>

120 *p* semplice

125 *mf* Cant.

130 *fz*

135 *f* *p* *f* *p* *lunga* *fp* *fff* *gliss.*

II.

Audante funebre

5 *mp* *mf cresc.*

10 *p subito* *pp* *mf*

15 *rit.* *atempo* *f pesante*

20 *ff* *dim.* *mf* *f* *più f*

25 *ff* *f* *dim.* *mf* *dim.* *rallent.* *atempo* *p*

30 *cresc.* *mf* *cresc.*

String. (poco)

rallent.

rit.

a tempo

f

mf

subito

cresc.

mf

dim.

cant. assai

rit.

molto dim.

Poco meno mosso

mf

rallent.

dim.

p

dim.

p

pp

ppp

The musical score for Violin (Vla) consists of eight staves of music. The first staff begins with a treble clef, a key signature of one sharp (F#), and a 3/4 time signature. The music is marked 'String. (poco)' and features a series of triplet eighth notes. The second staff includes markings for 'rallent.', 'rit.', and 'a tempo', with a box containing the number '35'. The third staff has a box with '40'. The fourth staff is marked 'subito' and 'cresc.'. The fifth staff includes 'mf' and 'dim.' with a box containing '45'. The sixth staff is marked 'cant. assai', 'rit.', and 'molto dim.'. The seventh staff is marked 'Poco meno mosso', 'mf', 'rallent.', and 'dim.', with a box containing '50'. The eighth staff is marked 'p' and 'dim.', with a box containing '55'. The piece concludes with a final staff marked 'ppp'.

III.

PRESTO

(Cello) *ff*

1. *f*

5

15

20

25

30

35

40

45

50

55

60

65

70

75

80

*fz* *dim.* *f* *p* *f*

*p* *mp* *f* *dim.*

*fz*

*fz*

*pp* *sub.* *pp* *sempre*

*p* *cresc.* *f* *p* *cresc.*

*mf* *mp* *dim.* *pp*

*pp* *cresc.* *f* *pp* *cresc.*

85

f dim. p

90

ffz

95

ffz

100

fz

lunga

attacca

Tempo di minuetto

5

pizz p

10

mp cresc.

15

mf p f Sub. p

20

rit. atempo

f molto dim. p

25

30

dim. p

Presto (Tempo I°)

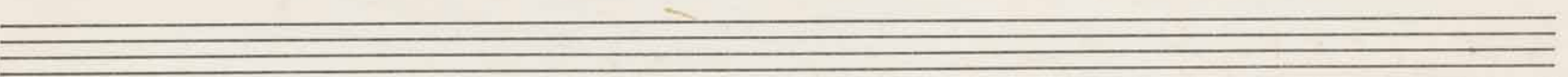
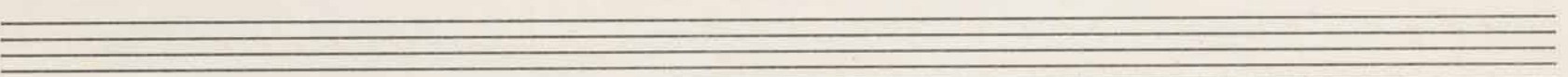
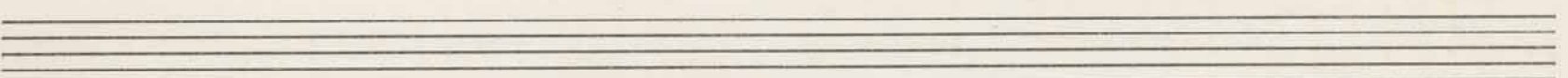
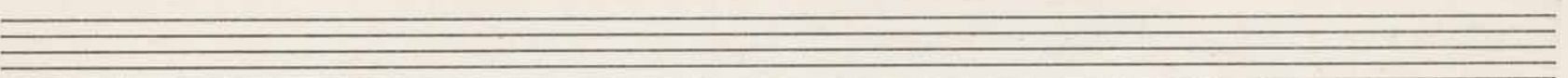
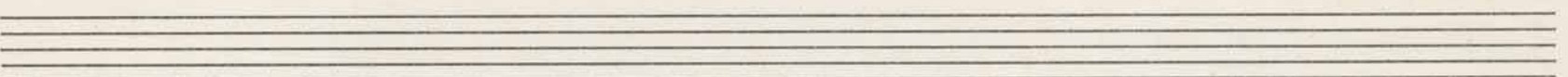
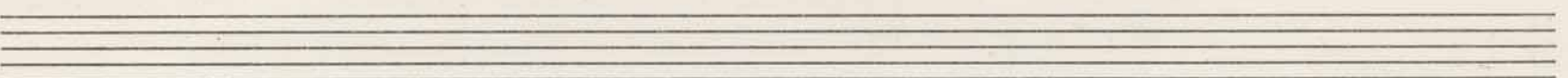
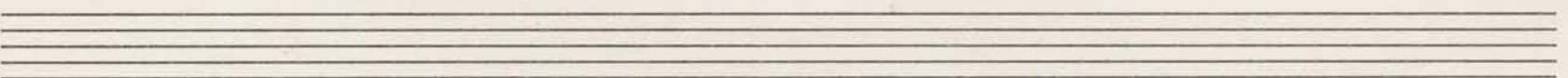
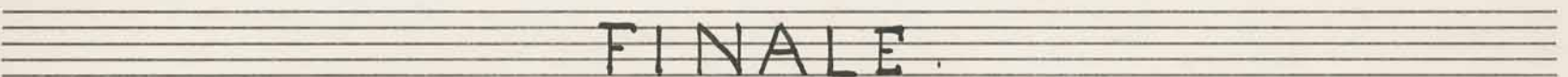
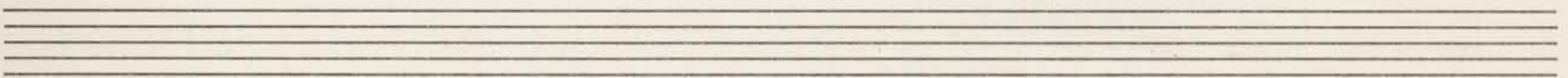
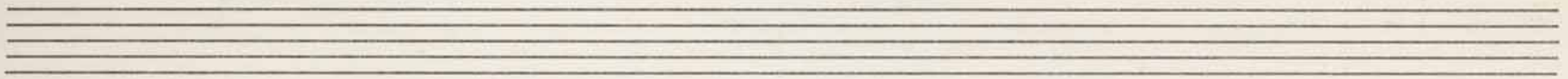
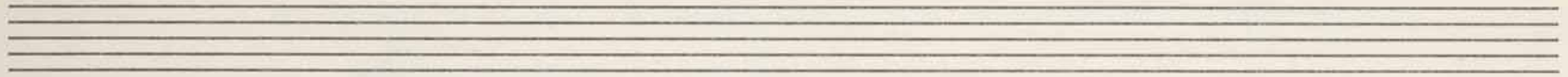
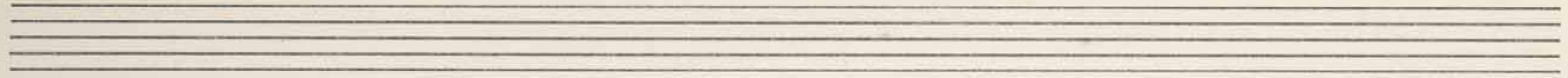
V.S.

Handwritten musical score for Violin (Vla.), measures 5 through 80. The score is written in 2/4 time and includes various dynamics and performance instructions.

- Measures 5-10:** Starts with *f*. Includes a *v* (vibrato) marking and a *b* (bend) marking. Measure numbers 5 and 10 are boxed.
- Measures 15-20:** Dynamics range from *fz* to *f*. Measure numbers 15 and 20 are boxed.
- Measures 25-30:** Dynamics include *p*, *mp*, and *f*. Measure numbers 25 and 30 are boxed.
- Measures 35-40:** Dynamics include *f* and *dim.*. Measure numbers 35 and 40 are boxed.
- Measures 45-50:** Dynamics include *ppp subito* and *(senza cresc.)*. Measure numbers 45 and 50 are boxed.
- Measures 55-60:** Dynamics include *cresc.*, *f*, and *dim.*. Measure numbers 55 and 60 are boxed.
- Measures 65-70:** Dynamics include *pp*, *cresc.*, and *pp*. Measure numbers 65 and 70 are boxed.
- Measures 75-80:** Dynamics include *fff subito*, *fff*, and *fffz*. Measure numbers 75 and 80 are boxed.

The score concludes with a *(tempo)* marking and a *fff* dynamic at measure 80.





# FINALE.

Vivace

ff dim. pp cresc.

f

atempo ff ffe rit.

f p mp

f p

35 3/4 4

40 Cant. p

45

50 cresc.

55 (Tempo I) ff

60

65 marc.

70

75 dim. f Cant.

80

85

dim.

90

*Cant.*

*f*

95

*fz*

100

105

*Cant.*

*mf*

110

*p* *cresc.*

115

*mp*

120

125

*p*

V.S.

cant.

mf *p* mf

fz *mf*

dim. *ff* *p*

*ff*

*f* *mp* *p*

ponticello

*ppp* (non cresc.)

cresc. sempre

*f* *fz* *ff* *fz*

*f*

*pp dolce*

(rall....)

dim. *ppp*

*ppp*

215 *cresc.*

220 *dim.* 225 *P cresc.* *fz*

230 *mf dim.* *mp* 235 *mf*

240 245 *mf*

250 *fff* **PRESTO** *fz*

255 260 *fz*

265 270 *fz*

275 280 *fz* *dim.*

*rall.* *Tempo I* 285 *f* *Andantino* *pp* *mp*

295 *p* *semplice*

300 (espr.) 305 *pp*

K.K.-69.

