

Melartin, E.
Cradle song

Cradle song

William Blakely

Emil Melartin.

Moderato

Canto

Violino I

Violino II

Viola

Cello

rit

caus

mp

p

pp

rit

pp



rit

Sleep, sleep
Sweet babe

Beauty bright,
in thy face,

Dreaming in the
soft de-si-res

joys of night;
I can trace,

(B)

rit.

Sleep, sleeps in the sleeps Little sor-rows sit and weep
 Sec-ret joys and see-ret smiles. Little pretty infant wiles

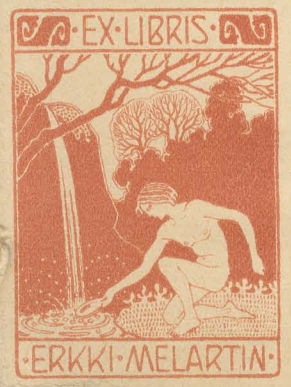
Handwritten musical score for section B. It consists of five staves. The top staff is the vocal line with lyrics. The second staff is the piano accompaniment. The third and fourth staves are additional piano parts. The fifth staff is the bass line. The music is in a key with three sharps (F#, C#, G#) and a common time signature. Dynamics include *ppp* and *rit.*

(C) Allegro

p As they ~~twist~~ ^{softest} limbs I feel Smiles of the morning steal

Handwritten musical score for section C. It consists of five staves. The top staff is the vocal line with lyrics. The second staff is the piano accompaniment. The third and fourth staves are additional piano parts. The fifth staff is the bass line. The music is in a key with three sharps (F#, C#, G#) and a common time signature. Dynamics include *p* and *pp*.

Allegro



①

O'er thy cheek, and o'er thy breast Where thy little heart doth rest.

②

⑦

O the cunning wiles that creep in the little heart asleep! When the little

mp *mp* *mp* *mp* *dim* *p* *dolce*



12

rit *Lento* *sempre*

heart doth wake, then the dreadful night shall break.

dim. *caut* *mf* *mf*

Handwritten musical score for a vocal line and piano accompaniment. The vocal line includes the lyrics "heart doth wake, then the dreadful night shall break." The score is marked with "rit" (ritardando), "Lento" (slow), and "sempre" (always). Dynamic markings include "dim." (diminuendo), "caut" (crescendo), and "mf" (mezzo-forte). The piano accompaniment features a complex texture with multiple staves.

rit

Handwritten musical score for a piano accompaniment. The score is marked with "rit" (ritardando). It features a complex texture with multiple staves, including a grand staff with treble and bass clefs. The notation includes various rhythmic values, slurs, and dynamic markings.