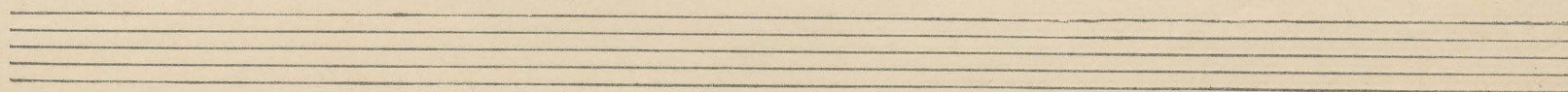


Lento assai

Canto Funebre.

Basso.

Handwritten musical score for Bass voice, titled "Canto Funebre." The score is written in bass clef, 4/4 time, with a key signature of three flats (B-flat, E-flat, A-flat). The tempo is marked "Lento assai" at the beginning. The score consists of five staves of music, with various musical notations and dynamics. The first staff begins with a rest, followed by a series of notes. The second staff features a dynamic marking of *f* and the instruction "tenuto". The third staff has a dynamic marking of *f* and the instruction "rit". The fourth staff includes the instruction "a tempo" and "a tempo mos". The fifth staff has a dynamic marking of *p* and the instruction "a tempo". The score concludes with a final rest on the fifth staff.



Tranquillamente e sempre pp.

pp. con sordino

simile

un poco più lento

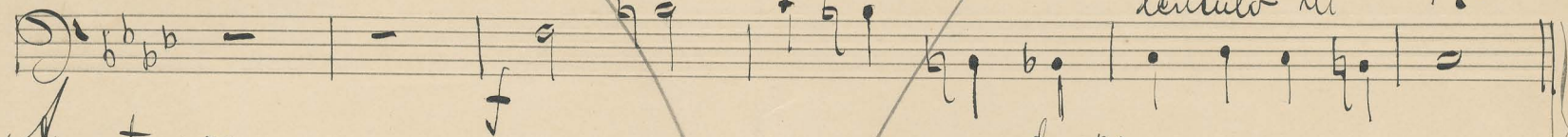
pp.

Canto Funebre

Lento assai

Basso

tentato rit



a tempo

a tempo



p.

rit rit-smp.

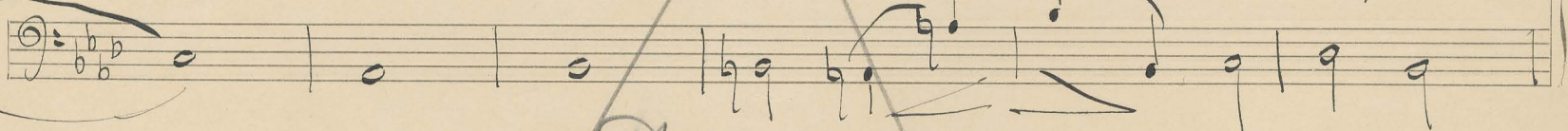
B.

tentato rit.....



diu

p.



Tranquillamente e sempre p.

simile



rit

con sordino

