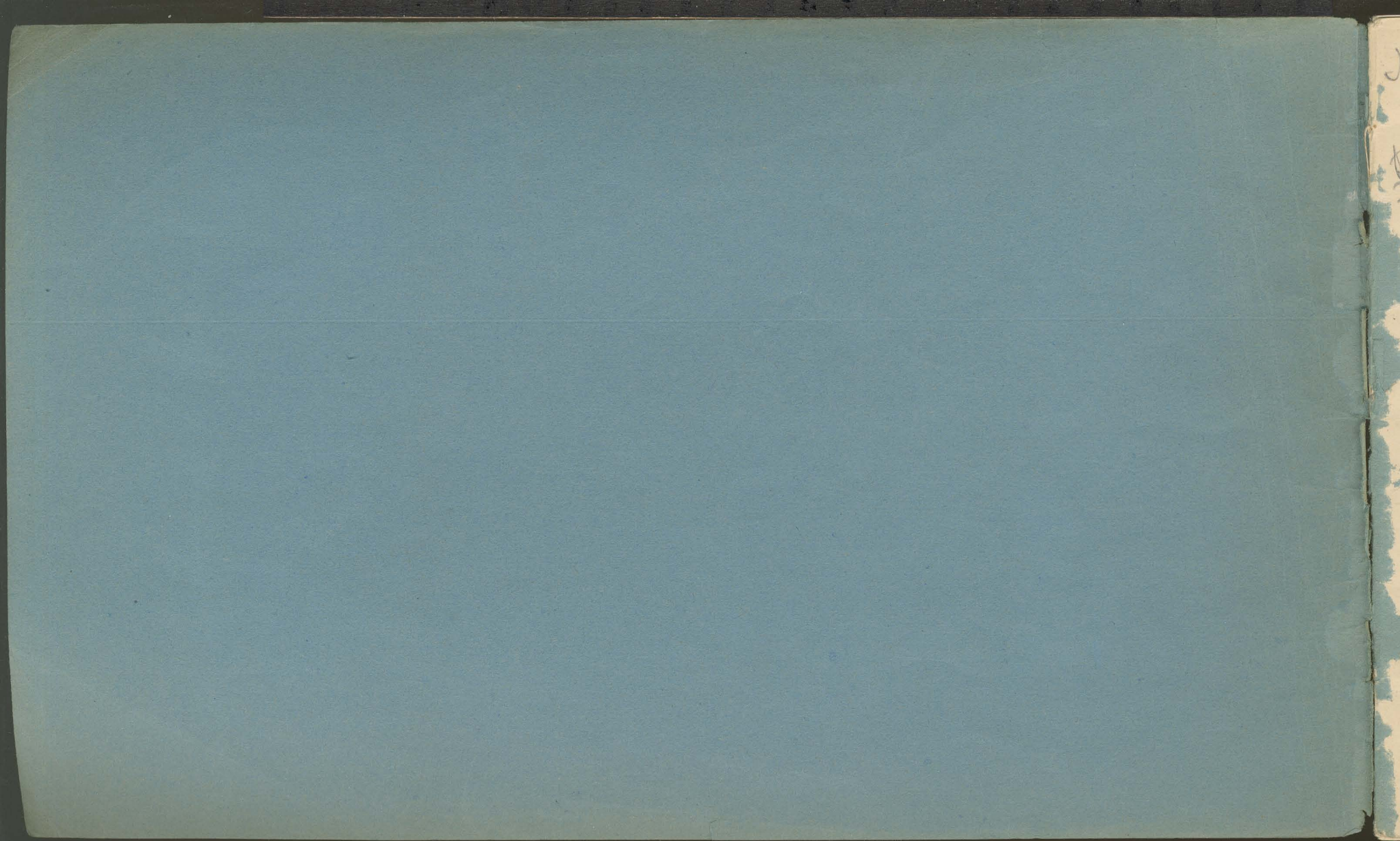


Melartin

Balkan Kuningatan

y. m.



No. 1.

tin
+ dly

lamb
all

"Balkanin Luringatan"

St

Handwritten musical notation on a five-line staff. The notation includes various notes, rests, and accidentals. A large diagonal line is drawn across the staff from the top left to the bottom right. The word "all" is written above the staff, and "rit" is written below it. There are also some numbers like "23" and "9" written near the notes.

Handwritten musical notation on a five-line staff. The notation includes various notes, rests, and accidentals. A large diagonal line is drawn across the staff from the top left to the bottom right. The word "all" is written above the staff, and "rit" is written below it. There are also some numbers like "9" and "64" written near the notes.

Handwritten musical notation on a five-line staff. The notation includes various notes, rests, and accidentals. A large diagonal line is drawn across the staff from the top left to the bottom right. The word "rit" is written below the staff. There are also some numbers like "5" and "10" written near the notes.

No. 2

Handwritten musical notation for the first system, consisting of two staves. The top staff has a treble clef, a key signature of one sharp (F#), and a 6/8 time signature. It contains several measures of music with notes, rests, and some markings like '+' and 'x'. The bottom staff has a bass clef and contains notes and rests. There are some scribbles and corrections in the first few measures.

Handwritten musical notation for the second system, consisting of two staves. The top staff continues the melody with various note values and rests. The bottom staff provides accompaniment with notes and rests. There are some annotations like "a.k.m." and "d" written in the space between the staves.

Handwritten musical notation for the third system, consisting of two staves. The top staff continues the melody, and the bottom staff continues the accompaniment. The notation is somewhat dense and includes many notes and rests.

No 5

Handwritten musical score for the first system. It consists of two staves. The top staff has a treble clef and a key signature of one flat (Bb). The bottom staff has a bass clef and a key signature of one flat (Bb). The music is divided into three measures by vertical bar lines. Above the first measure, there is a handwritten note "Muz sänd" with a horizontal line underneath. Above the second measure, there is a handwritten note "Ehni" with a horizontal line underneath. Above the third measure, there is a handwritten note "Mun" with a horizontal line underneath. The notes on the staves are sparse, with some vertical lines and dots indicating pitch and rhythm.

Handwritten musical score for the second system. It consists of two staves. The top staff has a treble clef and a key signature of one flat (Bb). The bottom staff has a bass clef and a key signature of one flat (Bb). The music is divided into three measures by vertical bar lines. Above the first measure, there is a handwritten note "Lambi" with a horizontal line underneath. Above the second measure, there is a handwritten note "a" with a horizontal line underneath. The notes on the staves are more dense than in the first system, with many small notes and stems.

Handwritten musical score for the third system. It consists of two staves. The top staff has a treble clef and a key signature of one flat (Bb). The bottom staff has a bass clef and a key signature of one flat (Bb). The music is divided into five measures by vertical bar lines. Above the first measure, there is a handwritten note "pikata". Above the second measure, there is a handwritten note "Sankheh". Above the third measure, there is a handwritten note "ei". Above the fourth measure, there is a handwritten note "Wawo". Above the fifth measure, there is a handwritten note "Pru". The notes on the staves are very dense and complex, with many overlapping notes and stems.

Handwritten musical score for the first system. The top staff is a vocal line with lyrics: "in die", "ho.", and "Mutter erpöret". The bottom staff is a piano accompaniment line. The music is written in a single system with a key signature of one sharp (F#) and a common time signature (C). The vocal line begins with a treble clef and a key signature change to one sharp. The piano accompaniment begins with a bass clef and a key signature change to one sharp. The system concludes with a double bar line and a fermata over the final note.

Handwritten musical score for the second system. The top staff is a vocal line with lyrics: "in die", "ni.", and "Se". The bottom staff is a piano accompaniment line. The music is written in a single system with a key signature of one sharp (F#) and a common time signature (C). The vocal line begins with a treble clef and a key signature change to one sharp. The piano accompaniment begins with a bass clef and a key signature change to one sharp. The system concludes with a double bar line and a fermata over the final note.

Handwritten musical score for the third system. The top staff is a vocal line with lyrics: "Se" and "die". The bottom staff is a piano accompaniment line. The music is written in a single system with a key signature of one sharp (F#) and a common time signature (C). The vocal line begins with a treble clef and a key signature change to one sharp. The piano accompaniment begins with a bass clef and a key signature change to one sharp. The system concludes with a double bar line and a fermata over the final note.

No. 4

tin

Fl.

o. m. u.

Handwritten musical notation for the first system. It consists of three staves. The top staff has a treble clef and a common time signature. The middle staff contains a melodic line with various note values and rests. The bottom staff contains a bass line with notes and rests. Vertical bar lines divide the system into measures.

Handwritten musical notation for the second system. It consists of three staves. The top staff has a treble clef. The middle staff contains a melodic line with notes and rests. The bottom staff contains a bass line with notes and rests. Vertical bar lines divide the system into measures.

Handwritten musical notation on two staves. The notation includes various notes, rests, and symbols. The top staff has a treble clef and contains several measures of music with notes and rests. The bottom staff has a bass clef and contains corresponding notes and rests. There are some additional markings, including a large '9' and a '+' sign.

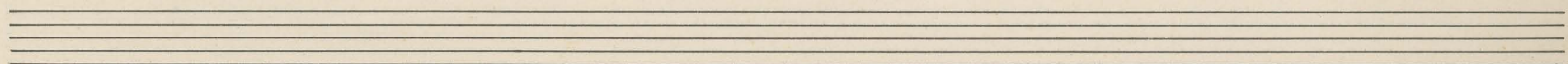
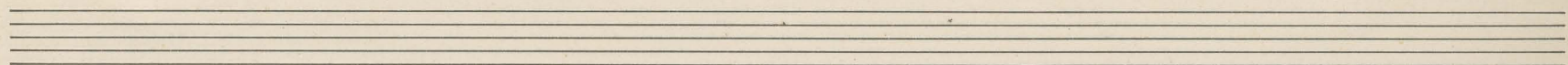
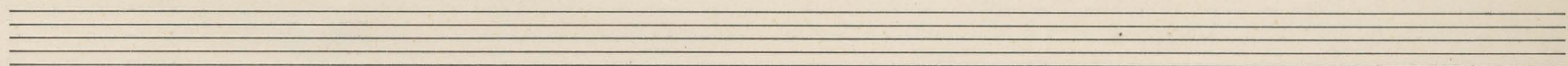
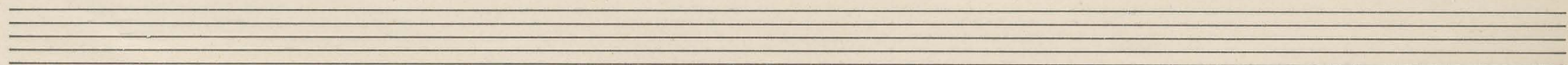
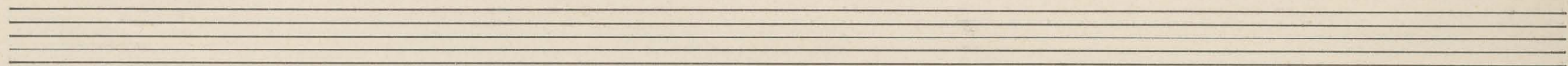
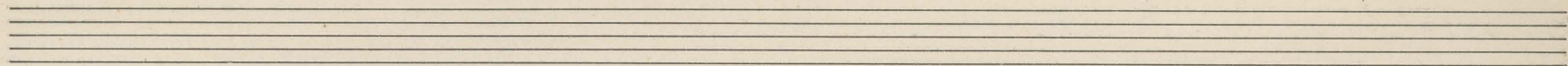
Handwritten musical notation on two staves. The notation includes various notes, rests, and symbols. The top staff has a treble clef and contains several measures of music with notes and rests. The bottom staff has a bass clef and contains corresponding notes and rests. There are some additional markings, including a large '9' and a '+' sign.

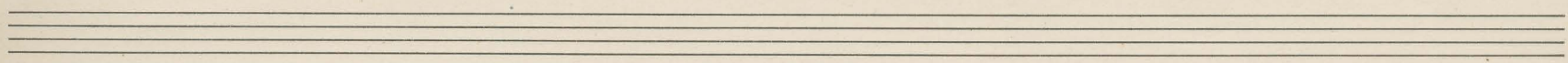
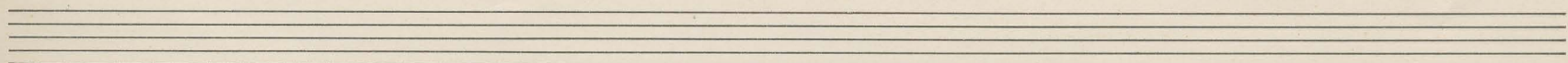
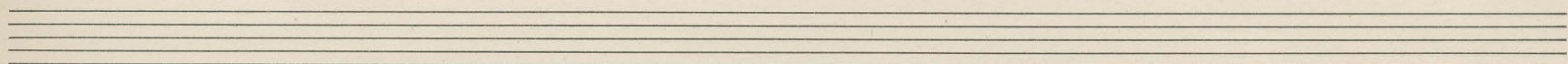
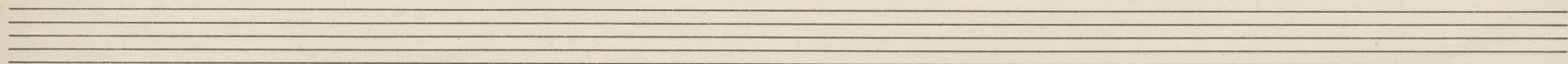
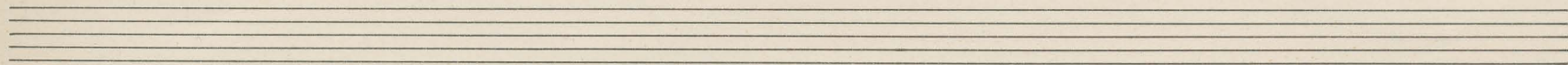
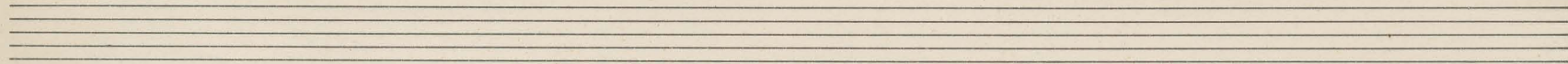
Handwritten musical notation on two staves. The notation includes various notes, rests, and symbols. The top staff has a treble clef and contains several measures of music with notes and rests. The bottom staff has a bass clef and contains corresponding notes and rests. There are some additional markings, including a large '9' and a '+' sign.

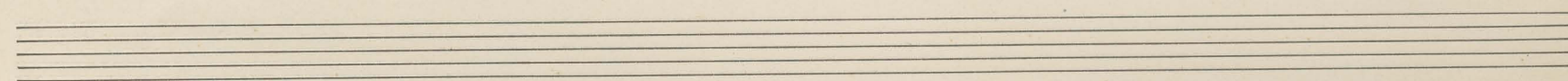
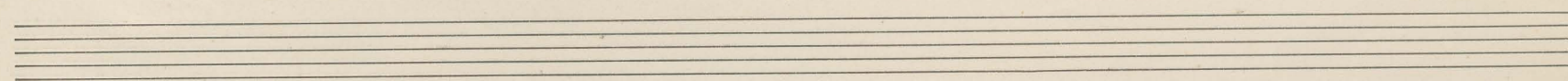
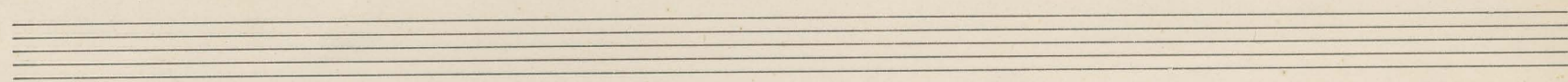
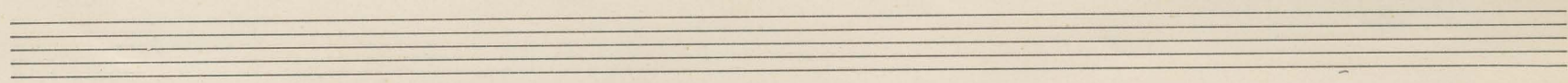
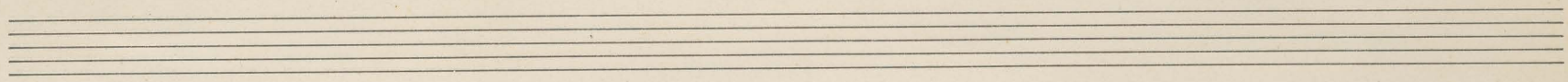
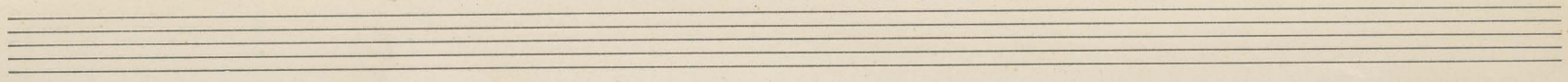
Handwritten musical notation on two staves. The top staff contains a melodic line with several notes and rests, including some slurs. The bottom staff contains a bass line with notes and rests, including a circled 'B' at the beginning. Vertical bar lines divide the music into measures.

Handwritten musical notation on two staves, enclosed in a large bracket on the right side. The top staff features a melodic line with notes and rests. The bottom staff contains a bass line with notes and rests, including some slurs and a circled 'B' at the beginning. Vertical bar lines divide the music into measures.

Handwritten musical notation on two staves. The top staff contains a melodic line with notes and rests, including a circled 'B' at the beginning. The bottom staff contains a bass line with notes and rests, including a circled 'B' at the beginning. Vertical bar lines divide the music into measures.







1/10

ten
to



