

Kys mig!

30.8.1900

Allegro

(Thorvald)

Spinn, spinn, spin

Kom, mit Lieb,

ritard

aus

mund

Part 2

Litan

Erken

Fin

Bona

1. Halb

*J. Tansini / O. Eulenburg*  
*Lacrymose*

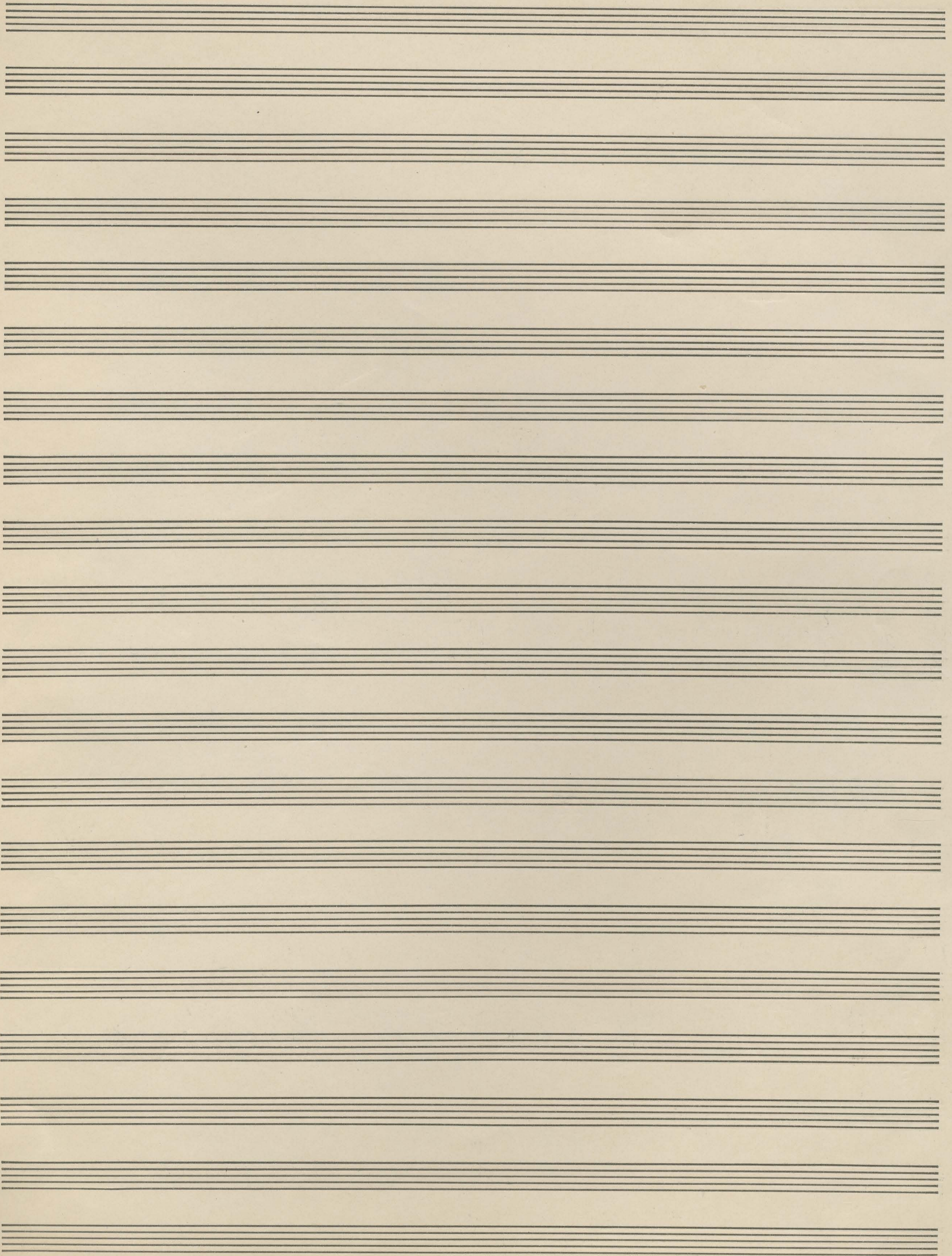
30.8.1910

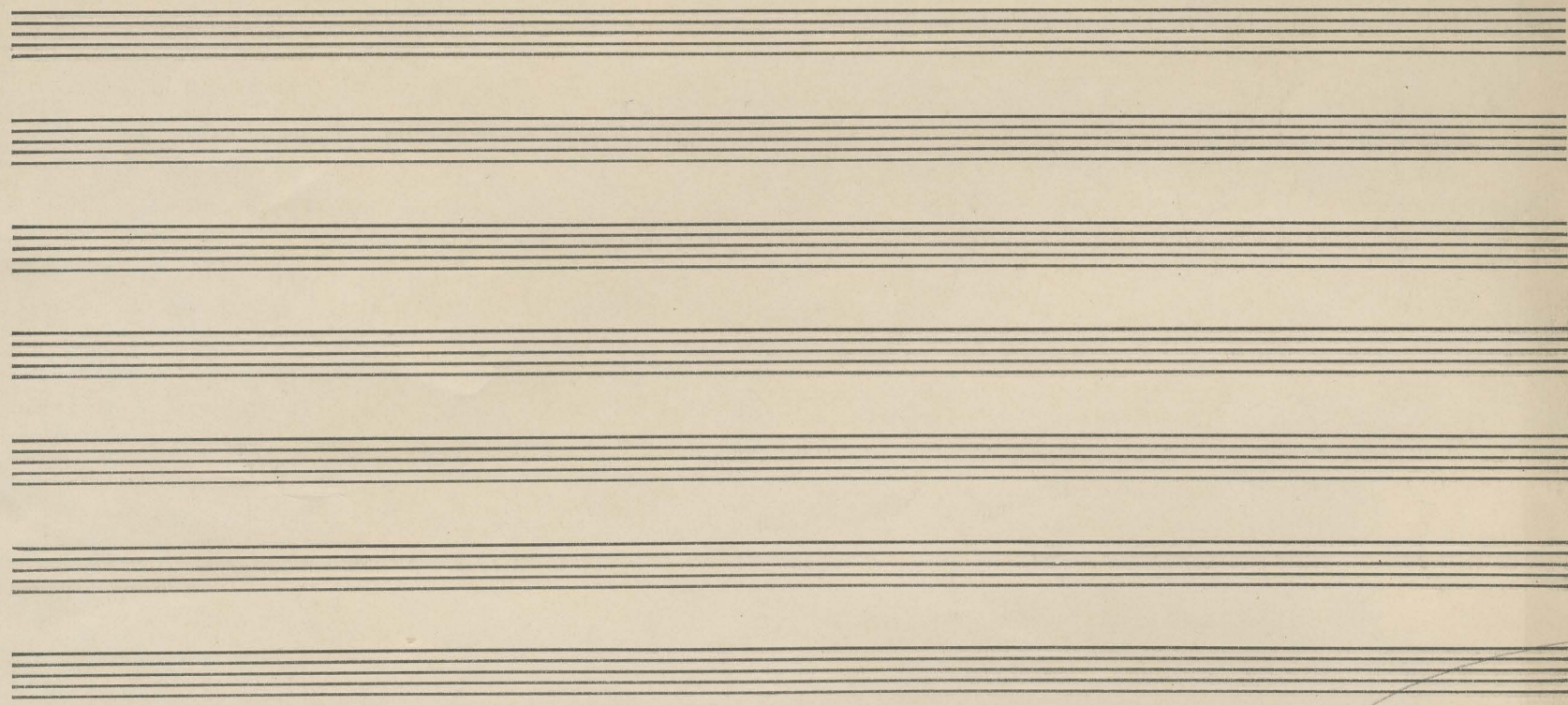
Handwritten musical notation for the first system, including a treble clef, a key signature of one sharp (F#), and a 4/4 time signature. The notation consists of a single melodic line with various note values and rests.

Handwritten musical notation for the second system, featuring a treble clef, a key signature of one sharp (F#), and a 4/4 time signature. It includes a "staccato" marking and some chordal accompaniment.

Handwritten musical notation for the third system, including a treble clef, a key signature of one sharp (F#), and a 4/4 time signature. It features a circled "2" and a "Vai" marking.

Handwritten musical notation for the fourth system, including a treble clef, a key signature of one sharp (F#), and a 4/4 time signature. It shows a melodic line with some complex rhythmic patterns.





Wurfer? (Third Large)

50.8.1900

Handwritten musical notation on two staves. The top staff contains a melodic line with notes and rests. The bottom staff contains a complex accompaniment with many notes, some circled, and various markings. The word "Kann Solo" is written above the first few notes of the top staff.

Handwritten musical notation on two staves. The notation is very dense and includes many corrections, scribbles, and circled notes. The word "Kann" is written above the first few notes of the top staff.

Handwritten musical notation on two staves. The notation is dense and includes many corrections and scribbles. The word "Kann" is written above the first few notes of the top staff.

Handwritten musical notation on two staves. The notation is dense and includes many corrections and scribbles. The word "Kann" is written above the first few notes of the top staff.