

Sinaus

L. Topelius

Sven. Meartin.

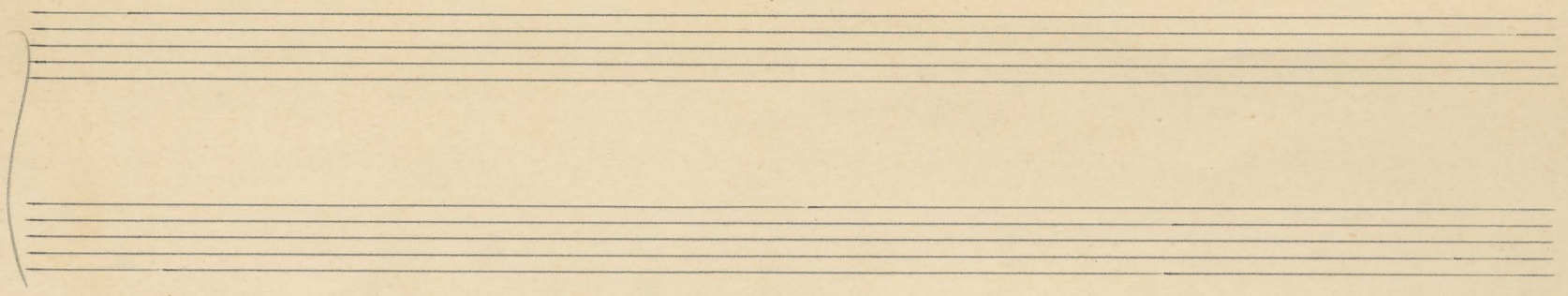
Jä-
küm
sin-naa, Her-ra,
poh-joisen lu-mi
ah-ke-rat Jä-
ka-too-va On

ru-ko-ri-le-vat hap-set, Jä-
kui-lan ja hel-mein loista, ja sin-naa
nyyrkin
tur-ha ilon on

i-oi-sat Van-huk-set har-maa hap-set, Kun
kas-tet-ta, Min-kui-vaa päi-vän päi-te,

ke-räi-lä kuk-ka-set puh-kee
... ..

2.429



☆

5

Handwritten musical notation for system 5. The top staff contains a melodic line with various notes and rests. The bottom staff contains a bass line with notes and rests. A large slur covers the first few measures. The word "Fin" is written in the middle of the system, followed by a circled number 3.

4

Handwritten musical notation for system 4. The top staff contains a melodic line with notes and rests. The bottom staff contains a bass line with notes and rests. The word "Fin" is written above the top staff, followed by a circled number 1.

3

Handwritten musical notation for system 3. The top staff contains a melodic line with notes and rests. The bottom staff contains a bass line with notes and rests. The word "Fin" is written above the top staff, followed by a circled number 5.

2

Handwritten musical notation for system 2. The top staff contains a melodic line with notes and rests. The bottom staff contains a bass line with notes and rests. The word "Fin" is written above the top staff, followed by a circled number 4.

1

Variation (Venus)

Handwritten musical notation for system 1. The top staff contains a melodic line with notes and rests. The bottom staff contains a bass line with notes and rests. The word "Fin" is written above the top staff, followed by a circled number 4.

31.3.29