

Jammal julpsalm. från 15^{de} århundradet
 harmon. S. M. Olsson

24. XII.
 1923.
 H. M.
 Månstam

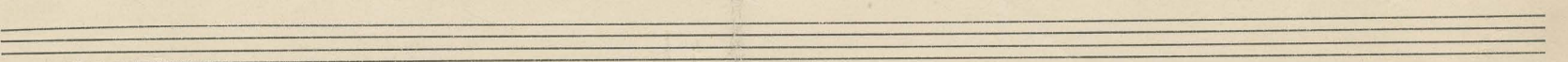
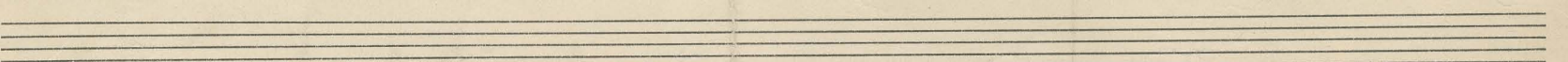
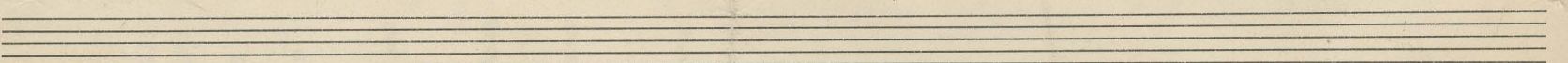
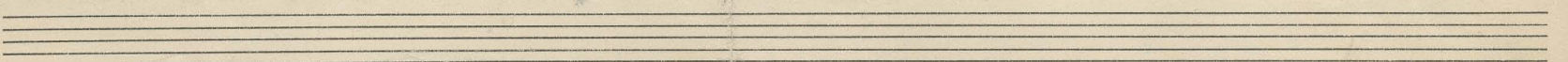
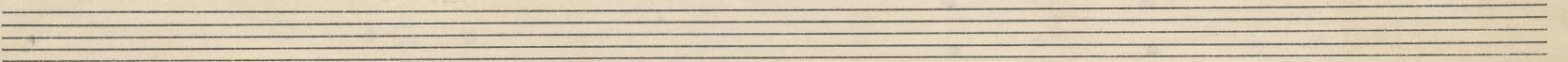
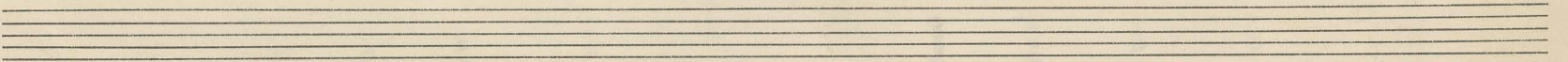
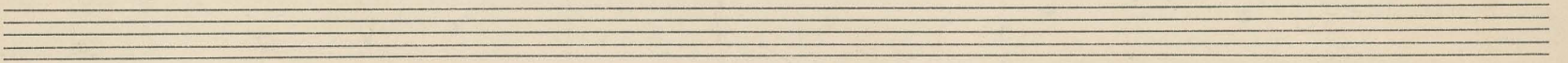
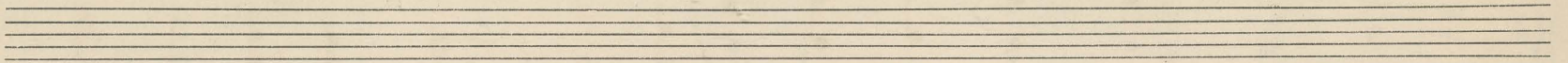
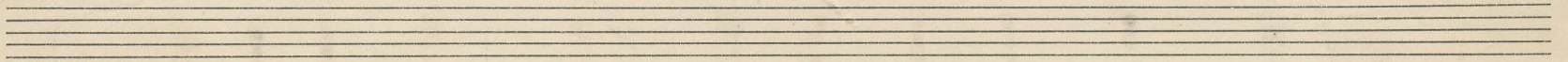
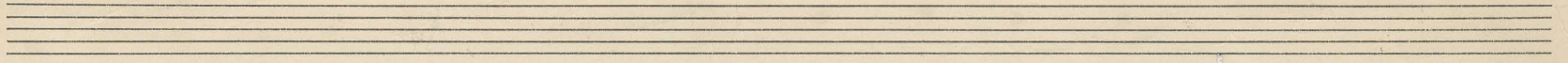
Det är en ros utsprungen
 Her-re, den som kla-ga
 Av Josef i Jeru-salem
 som följde honom

Hamn du färdens ren be-njungen.
 den står i färdens
 med din hjälp led-sa-ga
 till Faderens frö-de-

som på bären blommar blid
 i din faders hus
 Låt oss den kalla
 vinn-lo-va

midnatt-mör-ka tid.
 sa-lig-het
 Allarg. - - - - -
 ou-lys.

2 gång



26.XII.26