

Toward a nuanced understanding of musicians' professional learning pathways: What does critical reflection contribute?

Research Studies in Music Education

2022, Vol. 44(1) 127–157

© The Author(s) 2021



Article reuse guidelines:

sagepub.com/journals-permissions

DOI: 10.1177/1321103X211025850

journals.sagepub.com/home/rsm

Guadalupe López-Íñiguez 

Sibelius Academy, University of the Arts Helsinki, Finland

Pamela Burnard

Faculty of Education, University of Cambridge, UK

Abstract

Making sense of musicians' professional learning pathways is of crucial importance to understanding their career progressions, their routes into creative employment, and the relevance of various policies to their professional lives. However, this is a far cry from understanding how critical reflection catalyzes diverse learning routes, especially when considering evidence originating from postgraduate musicians' own accounts of their journeys into job creation. In this study, we invited five postgraduate classical musicians who were invested in professional learning through performance programs in higher education to contribute these types of personal perspectives. The article explores the value of postgraduate musicians' own accounts of their journeys and illustrates how a more nuanced understanding of them can be arrived at through the use of visual-based tools, for example, Rivers of Musical Experience and Dixit Cards. This constructivist intervention prompted both group and individual critical reflections, as well as sense-making processes that enabled the participants to become more informed about the (typically overlooked or neglected) critical incidents that differently catalyze *professional learning pathways*. All of the participants articulated sociocultural influences that were situated along historical, present, and future points of departure and arrival, helping them to create meaning and understanding of themselves and their (at times unsettling) professional learning pathways. From the ensuing thematic analyses, we identified a commonality of *themes across life phases* with *three key influential groups of people* (parents, peers, and professionals) that strongly affected their professional learning pathways and *learner identity-construction*. The results indicate that the relationships between these phases and people are complex. The research illuminates the previously unexplored connection between the meaning-making trajectories that are instantiated through critical reflection, and adds to our understanding of the development of musicians' professional learning pathways and learner identities.

Corresponding author:

Guadalupe López-Íñiguez, Sibelius Academy, University of the Arts Helsinki, Office R-603, Pohjoinen Rautatiekatu, 9, 00100 Helsinki, Finland.

Email: guadalupe.lopez.iniguez@uniarts.fi

Keywords

career, critical incident charting, critical reflection, higher education, identity, learner identity, music professional learning, musical futures, professional learning pathways, qualitative methods

Postgraduate musicians require specialist support to grow professionally and to engage reflexively in these challenging times (e.g., López-Íñiguez & Bennett, 2020, 2021). Large numbers of postgraduate musicians return to university settings to complete Higher Music Education courses to acquire new skills. Professional learning opportunities, as exemplified for postgraduate musicians, involve some of the most complex and fast-moving work contexts in existence (e.g., Burnard, 2019). The professional learning pathways and learner identities of musicians are understood as dialectical, dynamic, and fluid (Lawson, 2014; Turner & Tobbell, 2017); as living phenomena maximizing the impact of chances and choices during the process of finding or creating new music careers (see recent report in the United Kingdom by Bloom, 2020). In a study of identity and its relationship to cultivating a music career, Hrac (2010) found that self-reflexivity is increasingly important to the ways in which professionals engage, seize opportunities, and manage risk across their practices. Fostering the development of professional learning pathways for postgraduate musicians involves adapting and developing innovations that they perceive to be pragmatically valuable; however, trying their best to dutifully learn from critical reflection practices in their professional life may not align with or be supported by significant changes in the professional learning pathways of the careers of postgraduate musicians.

Determining what really matters to how musicians' professional learning pathways are evidenced in career decisions is problematic at best, and is also rapidly shifting given the current global pandemic. In this study, we define *professional learning pathways* (expanding the concept of "learning pathways" previously studied in musical improvisation by Després et al., 2016, to professional studies) as the constructed route that learners build through and outside their training programs to discover new ideas, pursue their interests, and develop their skills—trajectories that are necessarily relational and contextually constituted (e.g., Moran & John-Steiner, 2004). However, inequalities within the highly competitive fields of live performance and recording within the music industry are manifested at every level, from finding jobs in professional ensembles to securing commissions to record studio session gigs (Bennett, 2008). The field is still shaped by institutionalized hegemonic systems that contribute to a legacy of professional capital, established networks, and who-you-know/masculine and racialized privilege (Martin et al., 2019).

So, why is it that the overall professional learning experiences of musicians tend to be reported as either lacking credibility or sustainability, or as being not very powerful interventions, reified as episodic events without professional relevance (Schediwy et al., 2018), neither facilitating nor enhancing the prospects for career success (Ziechner et al., 1987)? In contrast, we know that in other fields, for example, teaching, professional learning pathways can facilitate the achievement of career success (Young & Collin, 2004). This situation is a far cry from the urgent calls (e.g., Burnard & Stahl, 2021; López-Íñiguez & Bennett, 2020, 2021) for professional learning to be responsive to how musicians learn, to have more influence on musicians' professional learning pathways, and to develop the role of critical reflection in professional life.

Even more urgently, considering how fast things have changed during the Covid-19 global pandemic, we find these previously identified difficulties in navigating learning (and future-making) pathways for postgraduate musicians combining with a lack of ensemble and solo performance opportunities. Many musicians are struggling to survive and cultivate strategies to overcome the limitations and complexity of musicians' professional learning pathways and

careers (Bennett, 2019; Gill & Pratt, 2008). So, how do postgraduate musicians reflect critically on their own professional learning pathways, and how does this inform their future? For now, at least, there is no clear answer to this question. But one thing we do know is that an understanding of critical reflective strategies (using tools like the ones we present in this study) can enhance and catalyze change for artists and music professionals alike, as individuals who want to design a successful career in music and re-position themselves as learners for the coming changes (Zhukov, 2019).

In this study, which ended exactly a week before the pandemic put the European country where this study took place into a lockdown (end of March 2020), we asked questions that, despite being different than those mentioned above, also need to make use of *critical reflection* processes to be answered. For instance, how do musicians' professional learning pathways reflect *self-discovery*, and how do they learn to navigate such unequal and challenging systems? How do they transfer these lessons to inform changes to their professional learning pathways? How do they use critical reflection strategies and concern themselves with developing the skills necessary for self-sufficiency when, in reality, such professional learning requires time and skills that are not easily accessible? How do professional musicians remain distinctive within the oversaturated sea of individual artists? How salient is the journey of *self-discovery* for postgraduate musicians for determining how they feel about and prioritize certain decisions, incorporating the opinions of family, friends, peers, and prominent role models in their life? How do musicians self-propel changes to their professional learning pathways in response to critical incidents?

Classical music education has been slow to react to this situation—which concerns social class, gender, and Whiteness, or economic inequalities (e.g., Bull, 2019)—failing to adopt what is now a normal method of operation in the visual arts and design, where professional learning happens in collaborative group work contexts that are valued as an end-product alongside individual creative output. It is argued here that a new set of skills is required to produce musically competitive work, and that these skills are located in critical reflective practices, and reflective management and organization, as much as they are in musicianship. Higher education requires postgraduate musicians to carve out new professional learning pathways, and there is a need to help postgraduate musicians develop their own learner identities, which can in turn make possible ongoing future-making learning, as suggested by López-Íñiguez and Bennett (2021). In this context, future-making education refers to reflecting critically together so that we can act together to make the futures we want, to make change possible (Burnard & Colucci-Gray, 2019).

As studied in the field of music performance, higher (music) education has overlooked the individual training experiences of students, producing the so-called “skills and knowledge gap” (Carey et al., 2019; Toscher, 2020). For instance, instrumental classical music instruction—where this study is focused, as it has powerful currency educationally (e.g., Bull, 2019)—remains rooted in traditional approaches that do not support agency, autonomy, and motivation in students. In addition, the overall training of students in many higher (music) institutions lacks an integrated education model (i.e., subject-based curriculum) that would offer chances to equip/engage them in “industry-ready” talk and the development of professional (e.g., collaborative, interdisciplinary, working, entrepreneurial) literacy and transferable, metacognitive, and technological skills and critical-creative thinking. The effects of this education model have led students to narrow their learning interests to exclusively mastering the craft of their instrument (Burland & Pitts, 2007; MacNamara et al., 2008), and top professional performers have acknowledged that music education did not sufficiently prepare them for their multifaceted careers and the continuous professional challenges they face (e.g., López-Íñiguez & Bennett, 2020).

Furthermore, music universities and conservatoires, as social spaces where learning takes place and learning cultures develop, can have a strong effect on students' learning and positioning within educational institutions (e.g., Burt-Perkins, 2013a, 2013b). To navigate this effect, it is imperative to engage in critical reflection practices, and one potential way to improve this aspect is the analysis of critical incidents—or turning points—that stimulate (both positively and negatively) times of change and choosing into and across future-making careers in music (in line with Denicolo & Pope, 1990; Griffin, 2003; Halquist & Musanti, 2010). This is the ability to make sense of an uncertain future by (a) examining the expanding nature of practice in the field, and (b) exploring creative and transgressive approaches to navigating the profession.

Critical incidents and learner identity in professional learning

In this article, we follow Falsafi and Coll (2015) in the field of Constructivist Psychology of Education, for whom *learner identity* is

... the set of meanings that we build on ourselves as learners and that allow us to recognize ourselves as such. It is the reference from which people construct and attribute meaning to learning experiences. We attribute (or not) a meaning to learning experiences and to what we have learned, learn or hope to learn, and we attribute one or the other sense to it depending on how we position ourselves as learners in situations and activities—past, present or future, relational or imagined—to which these experiences refer. (p. 17, translation our own)

According to Valdés et al. (2016), in their studies at the university level in fields other than music, critical incidents, or turning points, and key experiences in one's life confer on individuals an identity as learners. In addition, these authors establish a clear connection between the formation of a learner identity in graduate students and the diverse acts of recognition (e.g., giving an award, positive reinforcement/assessment) and rupture (e.g., preventing students from learning and professional opportunities, patronizing attitudes aimed at harming the confidence of students) by different stakeholders surrounding them (teachers, family members, colleagues). These authors argue that such acts of recognition and rupture might lead to meaningful destinations in their professional learning pathways (see also Yair, 2009).

However, despite the interdependent connection between identity construction and learning, as studied in professional development in fields such as the constructivist psychology of education (e.g., Coll & Falsafi, 2010), narrative theory (e.g., Sfard & Prusak, 2005), and the sociology of education (e.g., Jarvis, 1997; Woods, 1997), there has been little research on such experiences or turning points in relation to the learner identities of students in educational settings (Valdés et al., 2016; Yair, 2009). Furthermore, although there are a few studies in professional music studies concerning music teachers and adult learners (Coutts, 2019; López-Íñiguez & Coutts, 2020), there is no evidence of such research involving young post-graduate instrumentalists.

Thus, there is a need to better understand how these transformative experiences affect individuals' self-recognition as professional learners, and their positioning toward more or less meaningful professional learning activities and situations across their learning cycle, in which others' acts of recognition of ourselves as learners are crucial to our development and our engagement in lifelong learning (Falsafi & Coll, 2015); in this case, in relation to the future careers of emerging musicians. This type of work has an effect on the cognitive and emotional

learning of individuals in connection to their *self-discovery* and their positioning relative to their learning and career trajectories (Yair, 2009).

Turning points in various phases of postgraduate musicians' careers

In the field of music education, there has been work on the analysis of autobiographic memories of children and young pupils in music learning settings that uses the approach of critical incident charting. This research has focused on annotating key turning points or significant episodes in the Rivers of Musical Experience—a constructivist technique to promote critical reflection—among such populations (i.e., Burnard, 2012). It is understood here that critical reflection is a process of identifying, questioning, and assessing our deeply held assumptions about what we know and who we are being/becoming, feeling, and doing, as well as a critical process of being skeptical toward existing knowledge to dismantle hegemonic practices. However, no such studies have been conducted on postgraduate classical musicians enrolled in higher education.

Purpose of the study

In this study, we were interested in analyzing how classical instrumentalists enrolled in higher music education describe their professional learning pathways through the recall of autobiographic memories. Particularly, we attended to the elements that affected their changes and choices across their paths. In addition, we wanted to achieve an in-depth understanding of the issues identified by each participant and their articulations of mobilizing change strategies, and to help them reflect critically on the meanings they ascribe to their experiences and their desired future directions in music as lifelong learners. The following questions guided our research:

Research Question 1. What is the role that catalytic/significant *critical incidents* play in professional classical musicians' *professional learning pathways* and subsequent/potential identity (de-) construction? (*What evidence?*)

Research Question 2. Who or what do professional classical musicians identify as the key people/events/places influencing their *professional learning pathways* and (subsequent) perceived *learner identity construction*? And when and in which ways have they influenced/contributed? (*What matters?*)

Research Question 3. What is the potential role played by *critical reflection* through *visual-based tools* as a driving force for professional musicians situated in the context of postgraduate programs in higher music education? (*What contributes?*)

Method

Design

This is a critical incident case study (Weatherbee, 2012) in which we employ a psychosocial lens (Denicolo, 2003) approach to (a) elicit the participants' construction of experiences into and across careers/studies in relation to places, events, and people and (b) explore particular types of events or incidents that are perceived to be significant—through post hoc analyses—in some way in relation to the topic studied.

Table 1. Demographics of the sample.

	Participant				
	Lukas	William	Olga	Xie	Emma
Birth year	1991	1990	1993	1993	1985
Ethnicity	Local	Local	International (Europe)	International (Asia)	Local
Gender	Male	Male	Female	Female	Female
Study status	Full-time	Full-time	Full-time	Full-time	Part-time
Work status	Part-time	Casual work	Part-time	Casual work	Part-time
Nature of degree	Master's	Master's	Master's	Master's	Artistic doctorate

Sampling

We purposefully selected five classical cellists who come from different nations in Asia and Europe, with a mix of socioeconomic backgrounds, for maximum variety between them (Stake, 2005). The reason to select cellists is based on our interest to seek coherence and cultural alignment in terms of the specific aspects they share as music performers involved in postgraduate studies who are exposed to similar repertoires and instrument-specific methods (in line with Cook, 2006; Davidson & Coulam, 2006). The participants were exemplary of postgraduate musicians who made a choice to further their education by enrolling in master's and doctoral study programs for classical music performance at a European Higher Music Education institute. The participants were aged between 26 and 34 years of age at the time the research was conducted. There were two males and three females. The participants were chosen as representatives of musician students in transition from university studies to the employment stage. While all were enrolled full-time in mainly master's programs (just one was enrolled in a doctorate program), they were all engaged in either part-time (in this context meaning working fewer than 15 hr per week) or casual work (occasional work for short periods with no contractually guaranteed hours, generally paid hourly), by playing a few gigs as freelancers per year or teaching music as substitutes with short notice. All participants were available and willing to participate, and proficient in written and oral English. The names of the participants have been changed to protect their anonymity (see demographics in Table 1).

Procedures

All participants took part in a 90-min research-based seminar series given by the first author (Spring 2019–Spring 2020 in the Northern hemisphere), with the purpose of offering postgraduate classical musicians a critical event/experience within a group of peers (in line with Woods, 1997) focused on integral and specific aspects of musical training that were lacking in their personal study plans in higher music education, and which were linked to musicians' careers and generally rounded education. These included topics such as musical competence, approaches to learning, musical and professional identities, conceptions of teaching-learning instrumental music, employability and careers, self-regulation and self-determination for performance optimization, canonical music performance practice, and professional program notes writing.

The seminars included a combination of lectures by the first author and occasionally by invited experts, preparatory research reading, watching videos on the aforementioned topics,

individual and group reflective and role-playing activities, completing questionnaires and surveys, narrative writing, and collaborative discussions. Originally, these seminars comprised seven students; however, two of them left the process part way through the study as they moved abroad.

The seminars took place at the same institution where they were enrolled as part of their optional studies, for which study credits were added to their personal degree records, following the European Credit Transfer and Accumulation System (ECTS). The researcher accessed the participants via an open invitation to participate in the study, sent by the Head of the Department in charge.

Ethics

Ethical approvals were obtained prior to the study from the Research Ethics Committee at the university where the study took place. Students signed consent forms following the guidelines of the local Advisory Board on Research Integrity, and students were not obliged to participate.

Data collection tools

Once the seminars were concluded, the first author offered a session on Critical Incident Charting (i.e., Kelly, 1955; see also Webster & Mertova, 2007, in narrative research; or Schluter et al., 2008, in the field of nursing) as a constructivist visual tool that helps individuals to reflect critically on and identify/elicit the most crucial aspects related to their professional learning pathways. This tool was adapted to the music education field as “Rivers of Musical Experience” by Burnard (2012), in its first iteration with children (2000) and then in the context of teacher education (Burnard, 2006, 2008). For this, exercise instructions were given to annotate key turning points, critical incidents, or significant episodes in their professional learning pathways as musicians. The participants refined their data sheets for 6 weeks—at home and individually through critical reflection—in connection to the knowledge gathered during the seminars, responding to the question “What are your rivers telling you about your music career and education in connection to the topics we have learnt?” This served as a suspensive moment of their own analysis of their reflexivity.

After that, the first author presented the participants with an activity adapted from the official Dixit boardgame (using a selection of 32 cards from the Odyssey and Revelations sets) to support the participants in re-examining their Rivers of Musical Experience to synthesize their ideas and gather insight into each participant’s stories through progressive focus. This is a visual prompt/elicitation tool for reflecting more deeply on the previously identified sociocultural elements affecting the participants’ professional learning pathways—the cards acted as catalysts to go deeper into the meta-concepts that united or divided the five participants. These particular metaphors are a form of A/r/tography¹ that functions as a creative pedagogy and helps not only in expanding on, but also triangulating, the aspects identified in the Rivers of Musical Experience. For this, the participants were given the following instructions:

We found that parents, professionals (including teachers and performers) and peers are the 3 characterising features that influence postgraduate musicians’ careers. Is there a card on this table that speaks to you about them? If so, please choose a card for each group, and then talk about this card. Is there anything special that you have learnt by choosing these particular cards?

It is important to note that these cards also serve as respondent validation, because they help to confirm/verify or reject the interim analytic ideas found in the Rivers of Musical Experience, similar to the process of internal consistency utilized by Atkinson (2001) for the analysis of narratives. Overall, the study conforms with the implementation of methods triangulation to address issues of reliability and validity (i.e., Patton, 1990). In particular, we refer to both data and method triangulation (in line with Janesick, 1998) in which we use multiple data sources (responses to visual-based stimulus, a variety of participants), and multiple methods (Dixit boardgame, Rivers of Musical Experience, life story interviews) in the same study.

Thematic analytic approach

We first followed the interviewee–interviewer charting method to identify the main critical moments of change and choosing included in the Rivers of Musical Experience of each participant, following the premise that “a narrative is co-constructed around incidents that both interviewee and interviewer consider highly influential” (Burnard, 2012, p. 171). Graphics of each participant’s stories were created according to their life phases, equally identified across cases (see Figures 1–5).

This process helped to represent the thematic analysis, which guided the authors’ narrative interpretation of the results in connection to the main critical sociocultural elements identified in participants’ stories (Baker, 2005). For this, we used a triangulation approach to data representation to exemplify those elements influencing trajectories common to the participants’ professional learning experiences, which then guided the second phase of analysis. A collaborative co-coding protocol by both authors included several online sessions to build a shared understanding of categories and subcategories, and after that a cross-coding check of findings and overarching triangulation was performed on the analyzed data.

Findings

What evidence? What matters? What does critical reflection contribute?

The evidence of the participants’ professional learning pathways (past and present phases/in terms of critical incidents) is marked by the mapping of the critical phases and incidents that mark times of change and choosing in the Rivers of Musical Experience, which have been highlighted on the individual rivers (see Figures 1–5). We have aligned our description of critical incidents in terms of different acts of *recognition* and *rupture*, and *identity-(de-)construction* performed by key influential figures—*parents*, *professionals*, and *peers*—below, across eight developmental phases equally identified for all participants in relation to salient times and spaces in their professional learning pathways in music. These time–space matters were identified as follows: (a) infancy, (b) childhood, (c) early schooling, (d) middle schooling, (e) junior schooling, (f) senior high schooling, (g) higher education, and (h) transitioning to career.

To facilitate the description, we will present the findings by comparing the two local male participants first, followed by the two female international participants, and finally the local female participant pursuing a doctorate. Overall, evidence regarding the turning points identified by the participants helped them to engage in critical reflection, contributing to mobilizing change in their professional learning pathways. In the next subsection, we will introduce the participants’ Rivers of Musical Experience, as evidencing a meaning-making trajectory of common developmental phases (times and spaces that featured prominently and mattered to each participant).

Figure 1. Musical River of Experience by Lukas.

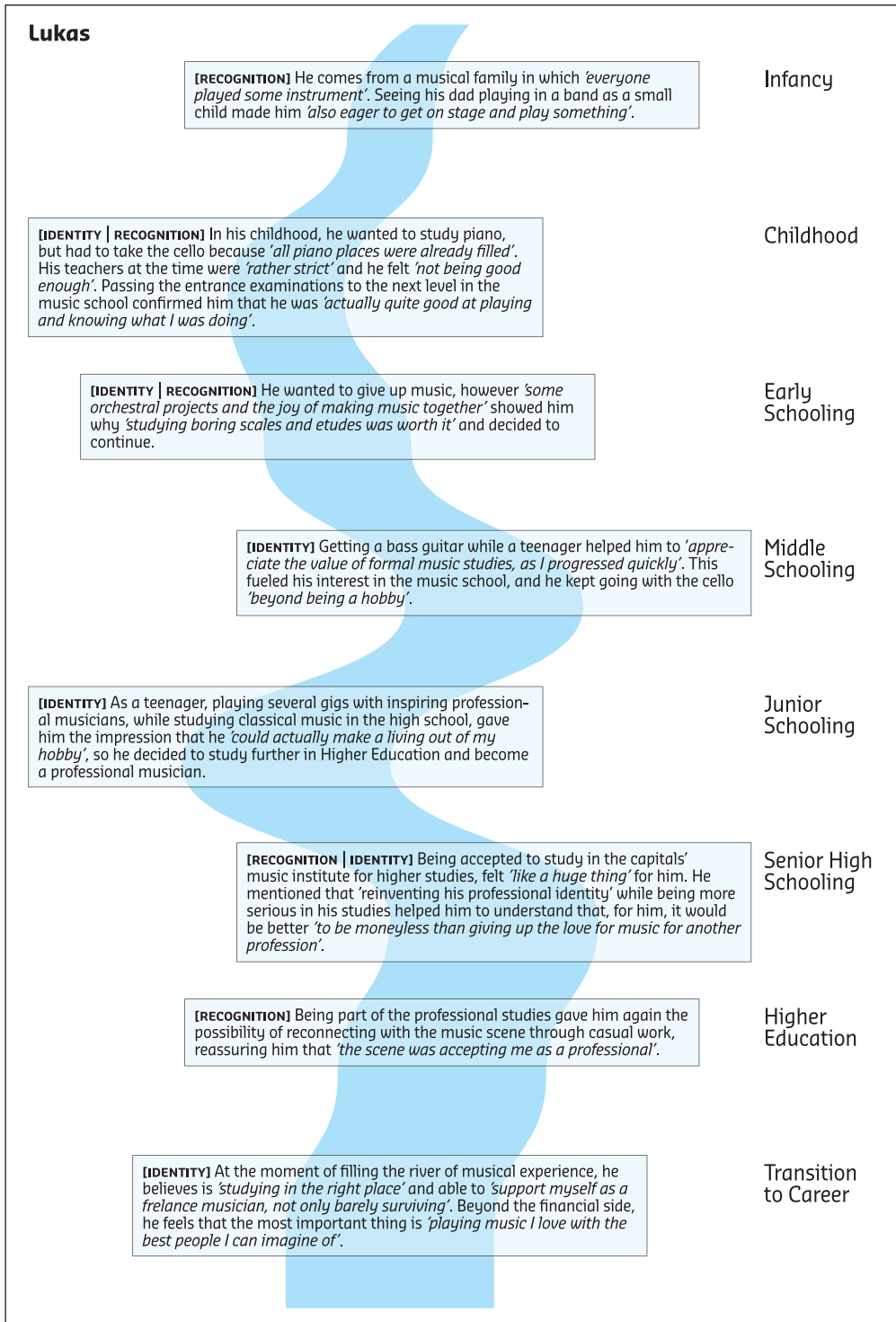


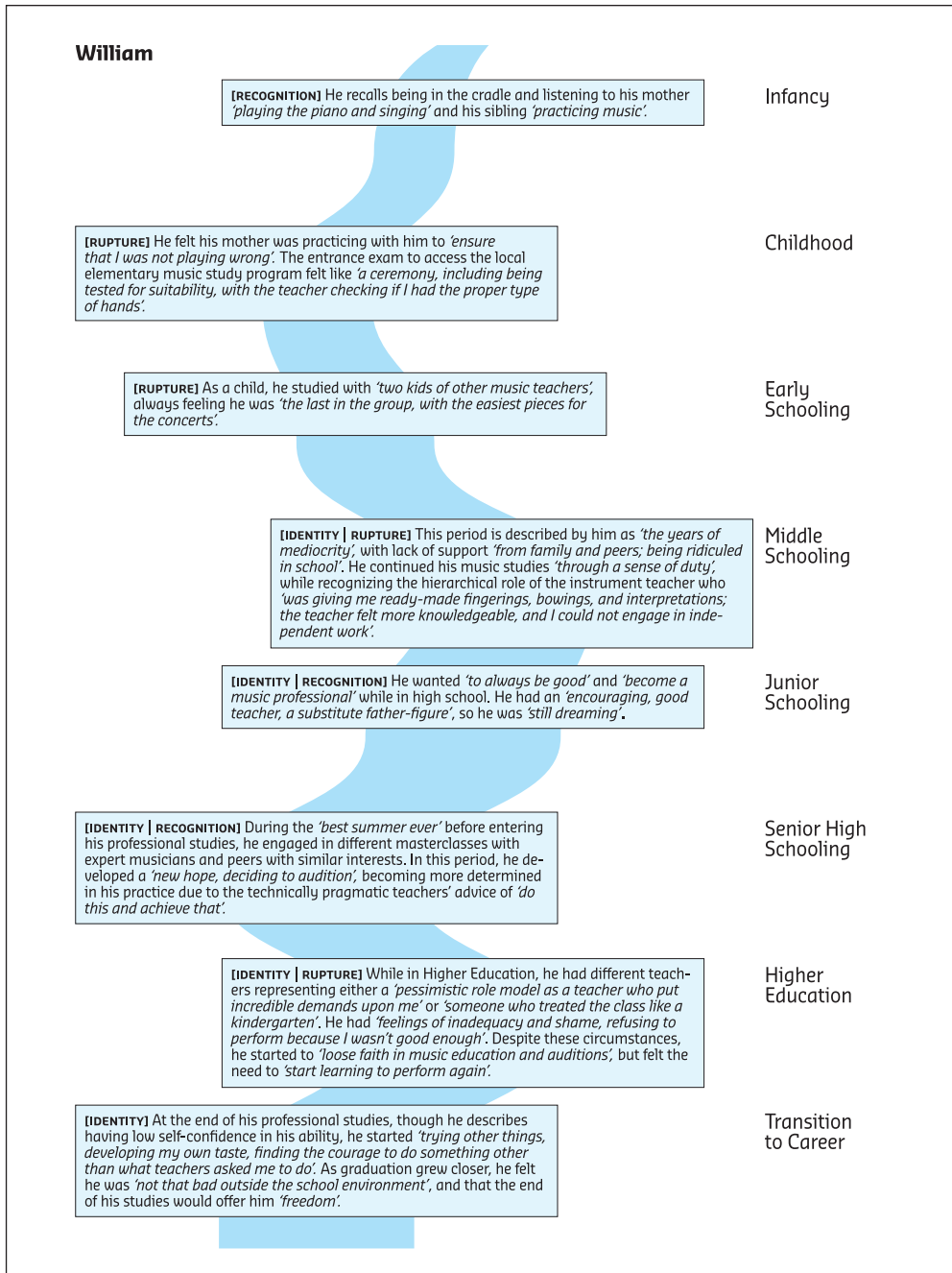
Figure 2. Musical River of Experience by William.

Figure 3. Musical River of Experience by Olga.

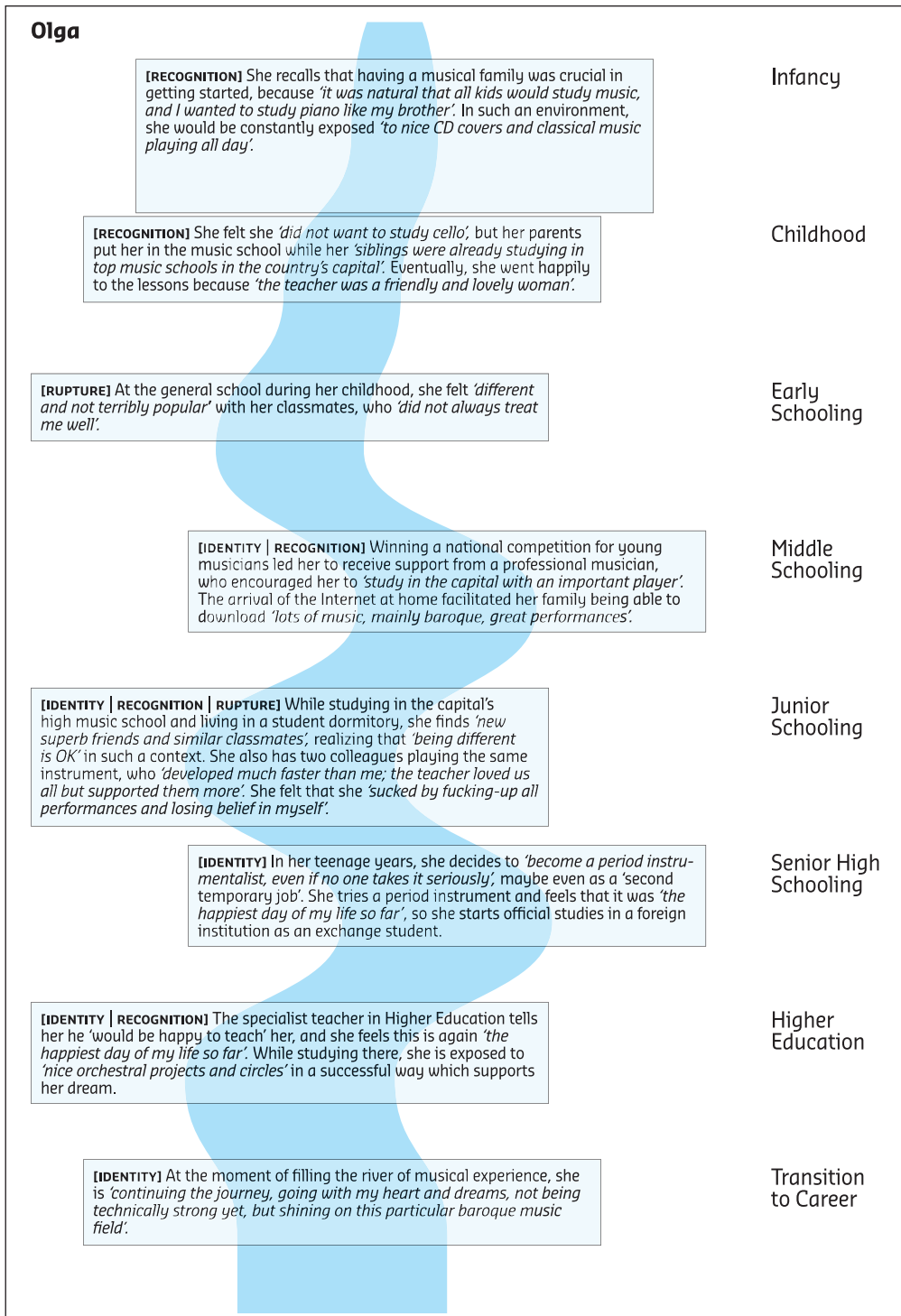


Figure 4. Musical River of Experience by Xie.

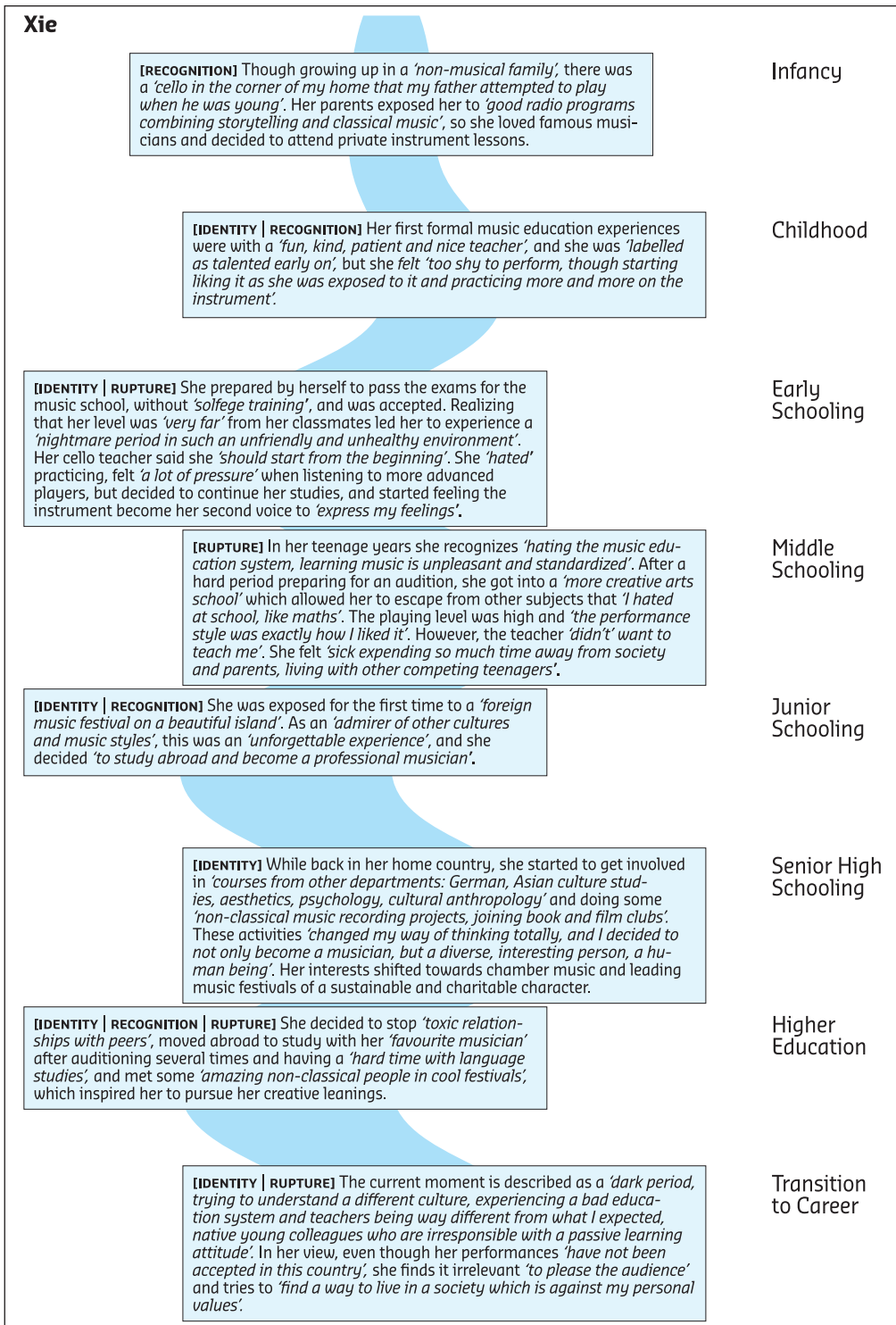
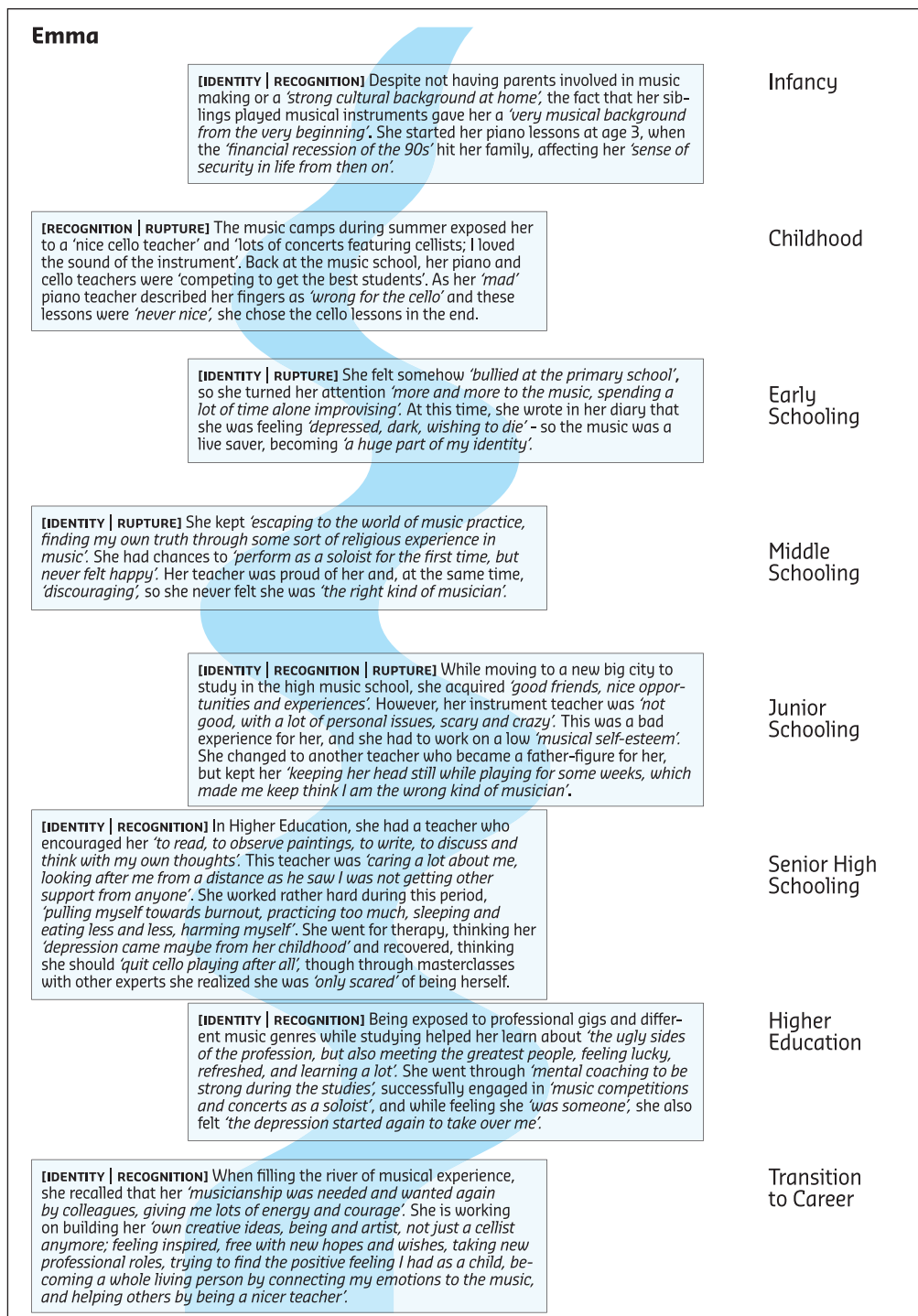


Figure 5. Musical River of Experience by Emma.

Introducing the participants' Rivers of Musical Experience. Lukas and William, both male and from the same country and socioeconomic background, although of slightly different ages and at different levels of their master's studies (beginning and end), were both raised by musical families, but their experiences of *parental support* differed considerably, as William felt lonely and unsupported because his *mother* was busy trying to raise her family alone while working, whereas Lukas's *parents* brought him to lessons and generally supported him. Infancy was a critical phase for both of them in relation to their music engagement. Lukas had his *father* as a musician role model, and was supported across his studies by both of his *parents*, even in times when becoming a professional musician seemed doubtful; in contrast, William experienced that he chose music because everyone at home was involved in music making, but felt that his *mother* was rather controlling, preventing him from feeling joy in his practice and development.

Their relationships to *peers* in their early school years were also experienced differently. While William felt that the other *music students* were better than him and that his *teacher* also made him feel that way, thus preventing him from bonding with other students, Lukas experienced *group* music making as thrilling. During middle and junior schooling in music contexts, Lukas felt connected to his *peers* through some experiences with *professionals*, and felt that non-formal music experiences contributed to appreciating his formal studies. William, on the contrary, centered his discourse on the lack of *teacher* support, his feelings of not being good enough, and thinking he had a duty to continue his studies. Eventually, a more encouraging *teacher* kept him engaged in music studies.

In senior high schooling and higher education, Lukas described the impact of *professional* experiences and being able to earn money from his concert engagements as evidence of his transition into the professional life; he also recognized that accessing the higher music institution mattered, interpreting this as a kind of recognition that he could become a professional. William described his current moment of transitioning into professional life as a learning momentum, as the lack of supportive and inspiring music *teachers* in higher education was not beneficial enough to his development. He still remains positive, as he has experienced positive moments with some encouraging *teachers* during his studies, but not as much as he would have desired.

Olga and Xie are both young females coming from two different nations than the previous participants, being international students in the institution and country where the research was carried out. They both had positive experiences in their infancy, as their *parents* were musically supportive in distinct ways. For Olga, starting music studies was a decision by her *parents*, and Xie felt she was labeled as "talented" early on, which had an impact on her education. Their relationships to *peers* during childhood are described in terms of being bullied or having lesser abilities than their musical *peers*. The experiences during middle and junior schooling for both participants were rather different. Whereas Olga felt recognized as a capable music student and found great new *friends* with similar interests among her *peers*, Xie felt desolated due to the lack of support from *teachers*, *peers*, or her institution, and suffered from feelings of mediocrity and depression.

Senior and high schooling were also considerably different phases for these participants. For Olga, following her passion and being supported by her *teacher* and her *professional* engagements mattered when shifting toward a different music style in her studies—this contributed to feeling that she belonged to the field, and thus she is currently fully committed to having a professional career as a performer in her chosen style. However, after critical reflection, Xie decided to go abroad to change the negative experiences she had suffered across music

education in her homeland, finding herself lost in a place where the *teachers* and *peers* were not any better and contributed to her systemic racialized negative experiences. The nature of these experiences responds to racialized group's recognition of "dynamic and complex process by which racial categories are socially produced by dominant groups in ways that entrench social inequalities and marginalisation" (Rights and Wellbeing of Racialised Groups, 2011, p. 2). Therefore, the sociocultural context abroad did not feel supportive of her ideas and background, which evidenced a rather negative transition from university to employment as a dark period where career decisions have to be made.

Emma, a female European student, is the older participant, and more advanced in her university studies, as she is pursuing an artistic doctorate as a performer-researcher. She describes her infancy as a period of economic crisis in the family, which—she recalls—led to feelings of depression that continued in later phases. Emma mentions a connection to music studies through her siblings playing musical instruments, despite not having musical *parents* or a strong exposure to culture. She connected immediately with the sound of her chosen instrument during her childhood through concerts, a decision supported by a cello *teacher* at the time she describes as caring and kind.

Music mattered during her early and middle schooling because it was comforting, as otherwise she experienced bullying and depression. Her identity as a musician was confronted because she did not feel happy as a player, and her *teacher* at the time was not as encouraging as she would have needed. In Junior schooling, she had a better relationship with *peers* in musical gatherings, but was still exposed to *teachers* who contributed to increasing her negative feelings. Senior high schooling was characterized by a more *supportive teacher* who also encouraged Emma to develop herself in other important areas of life. However, her depression continued, and as a result, she overpracticed to physically harm herself. Attending therapy and talking with *supportive peers* helped her to reflect critically on her life, while contributing to more positive attitudes toward herself as a person and as a musician.

Even though Emma particularly enjoyed her musical experiences during higher education—being exposed to different musical genres, winning competitions, and playing successful concerts—depression was still rather present in her life. What matters now to her when she is graduating from her studies is that while she is working on those aspects of her life, she is engaged in *self-discovery* processes by developing artistically and academically, and enjoying playing music at a professional level with *supportive peers*.

The ways in which these musicians narrated the critical incidents that influenced their professional learning pathways involved *acts of recognition* by key influential people who mattered to the participants; for instance, most of the parents drove changes in them by providing learning opportunities, peers encouraged changes by securing confidence and self-belief in negotiating who these musicians were, and professionals powered changes by sharing formative experiences with them or supporting their studies and growth. *Acts of rupture* also informed their professional learning pathways, either through teachers dictating meanings and diminishing self-confidence, parents overcontrolling and pressing them to practice and succeed, or peers engaging in bullying or competition. These findings led to a further task engagement in critical reflection through the Dixit Cards² activity, which served not only as a triangulation of the people, relationships, and events, but also as a means to ascertain how the participants see themselves and construct their identities. Thus, the next section presents summaries of the data analysis related to the use of Dixit Cards, which resulted from the participants' detailed narratives and rationales for choosing three cards.

Description of the participants' critical reflections on professional identity construction in the Dixit Cards activity. How do the participants see themselves? Lukas (see Figure 6) reflected on his appreciation of the efforts made by his *parents* during his music studies. He sees himself now as a result of *the power of teachers as gatekeepers* of knowledge, mentioning the need to become more autonomous and artistically agentic, and keeping a positive mind-set and being surrounded by *supportive peers*.

William (see Figure 7) highlighted his feelings toward his nonsupportive *parents* as informing his present situation. While William would have liked to be inspired by *expert performers* and more supportive *teachers*, he sees his *peers* and his professional environment as the source of his self-acceptance and self-confidence.

Olga (see Figure 8) learnt that her *parents* are still the most supportive agents in her life, and that she had both demanding and supportive *teachers*. She learnt that artistic agency is important for her, and that her loss of self-confidence and passion was connected not only to teachers but also to her *peers* during earlier stages of her professional learning pathways.

Xie (see Figure 9) spoke about her own adventurous personality and the boundaries her *parents* might have wanted to place on her during her professional learning pathways. She includes a negative depiction of *teachers* as dehumanizing their relationship with students by not caring about other aspects of their lives beyond music learning and excellence. She describes a lack of trust in *peers'* intentions and interests toward her and others.

Emma (see Figure 10) reflected on her warm, positive childhood memories that relate to her *parents*, despite not having the economic resources to fully support her. She explains that some *teachers* did not let her become the musician she wanted to be, and that she was bullied by her *school peers*, while having an overall positive relationship with musical *peers* during her professional learning pathways.

Overall findings: What can we learn about what matters and the value of critical reflection through triangulation processes? A synthesis of the findings from the Dixit Cards activity in relation to the Rivers of Musical Experience is presented in Figure 11, which shows the shifts in what participants focused on in their critical incident charting (some of which is shared/linked and other times contrasting) and how we are making meaning and moving toward an understanding of the interplay between parents, professionals (teachers/performers), and peers, and the significance of these postgraduate musicians' shifts in professional learning pathways over time. There is a continuum of "continuity" (related to the acts of recognition and rupture) and "culmination" in professional learning pathways that exemplifies the value of critical reflection to engage postgraduate musicians in these meaning-making trajectories. We observe how opportunities for learning are created, accepted, or rejected by the participants in the real-life dynamic of interaction with key people.

As can be observed, there is not a clear leitmotif connecting the eight phases across all the participants in relation to the ways in which key people contributed to these participants' professional learning pathways and identity-construction. Instead, we observe a multiplicity of aspects, including diverse ways of dismantling binaries that tend to be more complex and varied in the first experiences of early musical experiences (Middle and Early Schooling), and then again in later phases of their professional learning pathways (Higher Education and Transition to Career). We also observe how at certain times in the participants' life, the dynamic interplay between parents, professionals, and peers is recognized as a driving force in/as/through professional learning pathways.

Figure 6. Cards Selected by Lukas for Each Group of Recognition/Rupture, Including Summaries of the Participant's Narrative.

Lukas



PARENTS CARD: Ant-Supporting-Cicada

IN THIS CARD I SEE: "Early on, my *parents* brought me places and made sacrifices to *support* my music studies, asked me to practice, and played with me. When I wanted to quit, they helped me to go on. When I decided to be a professional, they weren't questioning my abilities or anything, just telling me that it is really hard."

THE INSIGHT ACQUIRED FROM REFLECTION ON THIS CARD IS: "I *appreciate* more what my *parents* have done for me now."



PROFESSORS/PERFORMERS CARD: Powerful-Wise-Elder

IN THIS CARD I SEE: "The books represent the information that comes from the *teachers*, and you can just pick what you actually want to take from that—it's your own choice, but only in later stages, at the beginning they *decided everything* for me."

THE INSIGHT ACQUIRED FROM REFLECTION ON THIS CARD IS: "I have learnt that I am more *autonomous* than I thought when it comes to musical ideas."



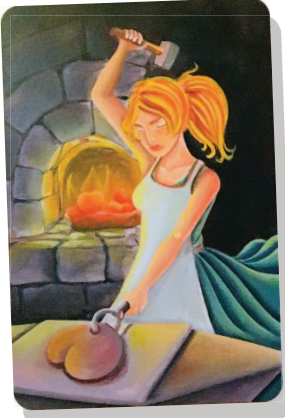
PEERS CARD: Musical-Animals-Puzzle

IN THIS CARD I SEE: "Each musician in a group has their own role to play. They're like part of the *bigger puzzle*. I've never really felt the competition with my *peers*. I might have also been one of the better cellists all along, and this made the whole thing easier and made me *less competitive*."


THE INSIGHT ACQUIRED FROM REFLECTION ON THIS CARD IS: "I am sure my positive feelings will help me in the future; it's good to have *peer support*, I want to have mental peace to focus."

Figure 7. Cards Selected by William for Each Group of Recognition/Rupture, Including Summaries of the Participant's Narrative.


William



PARENTS CARD: Woman-Hammering-Baking-Fire
IN THIS CARD I SEE: "This is a lady hammering something that looks like a heart shaped piece of bread; I am the lady. My family is actually *outside the picture*, probably upstairs. When I needed support, I didn't get it, my *mother* was divorced with several kids, so she had to work a lot and I was alone all the time. Yet the fire is the symbol of a warm home, and the bread is heart shaped, which is kind of nice."
THE INSIGHT ACQUIRED FROM REFLECTION ON THIS CARD IS: "It strengthens my feelings of how important the *early influences* are on the rest of your life."



PROFESSORS/PERFORMERS CARD: Winged-Golden-Cup
IN THIS CARD I SEE: "The *teacher has the knowledge*, which is the golden cup. But a golden cup doesn't have wings; the wings are alive, thus the whole cup is alive. There's no such thing as a *guru* who can tell me that this is the *truth* and you should aspire to it. So, in a sense, I guess it also sort of represents that I've never felt so connected to a *teacher* that I would actually have believed everything they say. The wings represent something that is not actually what it seems. The whole thing is *absurd*, like most of my *teachers*."
THE INSIGHT ACQUIRED FROM REFLECTION ON THIS CARD IS: "I want to find *strong people and trust them*, to have like *role models* or the likes, but at the same time I noticed that I'm not really good with *authoritative figures*. I'm a really headstrong person, and should *let go of teachers*."



PEERS CARD: Surprised-Sneaky-Child
IN THIS CARD I SEE: "This person is peeking at his *peers* from behind a door. Okay, how well is this person playing today? How well is he playing now? Who is this guy? We rather *prioritize practicing* or working for a concert than spending *time with friends* or actually building *long-lasting relationships*. There is a *competitive attitude* to music education. No wonder that at the professional levels people keep to themselves."
THE INSIGHT ACQUIRED FROM REFLECTION ON THIS CARD IS: "This won't change whatsoever, so I must *be strong in any situation* with all kinds of people."

Figure 8. Cards Selected by Olga for Each Group of Recognition/Rupture, Including Summaries of the Participant's Narrative.

Olga

PARENTS CARD: Women-Rooting-Man-Gardening
IN THIS CARD I SEE: "My *family* is my roots, and I also deeply love nature; they have been really *supportive*, partly because I was the youngest for some time. Sometimes my *father* was *upset* after I played crap. He is a tough guy, but *generally supportive*."
THE INSIGHT ACQUIRED FROM REFLECTION ON THIS CARD IS: "I'm single, so they are still the *biggest support* in my life."

PROFESSORS/PERFORMERS CARD: Sculpture-Sculpting-Itself
IN THIS CARD I SEE: "*Teachers* teach from their own *experience*, it's obvious they *sculpt* the students in one way or another, but I just didn't fit into their ideas, unless I liked them. Some have been *demanding*, so I lost belief in myself, and some *supportive* ones were guiding me into professional life."
THE INSIGHT ACQUIRED FROM REFLECTION ON THIS CARD IS: "I want to develop my *own musical ideas*, not those of my teachers. I prefer *constructive teachers* over *traditional* ones."

PEERS CARD: Pride-Shame-Envy
IN THIS CARD I SEE: "I'm in the third position, but I'm going past the *other guys* at some point. It is a nasty card, because it just shows that everybody was always *better* than me. Because of this, I *cannot be so nice and free* on the stage as non-classical musicians who *enjoy and jam with others*."
THE INSIGHT ACQUIRED FROM REFLECTION ON THIS CARD IS: "This is a reminder that I should *not go for this path*, because of such *bad feelings*."

Figure 9. Cards Selected by Xie for Each Group of Recognition/Rupture, Including Summaries of the Participant's Narrative.

Xie



The illustration shows a desert landscape with a long, straight road leading towards a horizon. In the foreground, there are several glass domes on stands, each containing a small object. A yellow snake is coiled on the road. The scene is set against a warm, orange and yellow sky, suggesting a sunset or sunrise.

PARENTS CARD: Snake-Road-Vacuum
IN THIS CARD I SEE: "I am the snake, and my *parents* try to *protect* me really well, so no one could destroy me, and no one could touch me and keep me clean and nice and as beautiful as how they gave me at the beginning; like all *parents*, they want their children to be *cute, healthy, and safe*. But I am an adventurer and I won't stay inside their *glass bubble*."
THE INSIGHT ACQUIRED FROM REFLECTION ON THIS CARD IS: "I am more *fragile* than I thought, but I still choose *danger*."



The illustration depicts a woman in a red dress kneeling on a dark, patterned floor. She is looking up at a man in a white shirt who is standing and holding a large, brown, root-like object. The scene is set in a room with large windows and curtains, with a warm, golden light filtering through.

PROFESSORS/PERFORMERS CARD: Women-Rooting-Man-Gardening
IN THIS CARD I SEE: "This card like shows the surface of humans, and I think that man is my *teacher*, most of the time. They do not see the ground and are *not interested*, they are *trimming* the extra parts from the trees or leaves and trying to make them grow bigger or better as they see fit."
THE INSIGHT ACQUIRED FROM REFLECTION ON THIS CARD IS: "My tree will *just grow* in its own way anyways, they did not manage to destroy my tree; *teachers are too simple for me*."



The illustration shows a young girl wearing a brown hat and a blue shirt, peeking out from behind a white door. She has a surprised expression on her face. The door has a gold handle and a lock.

PEERS CARD: Surprised-Sneaky-Child
IN THIS CARD I SEE: "This is me, always curious about something or someone. *Curiosity* might be shocking also. It might be scary *dangerous*. You might be *surprised* at what you find in *peers*. Like a door that you open, you never know what they're doing and who they are and what's at the *bottom of their heart*."
THE INSIGHT ACQUIRED FROM REFLECTION ON THIS CARD IS: "If the door is locked by itself at the beginning, don't try to open it; they might throw a weapon at you otherwise."

Figure 10. Cards Selected by Emma for Each Group of Recognition/Rupture, Including Summaries of the Participant's Narrative.

Emma



PARENTS CARD: Children-Stars-Candles

IN THIS CARD I SEE: "Christmas decorations, which have been always very strong emotional things in our *family*, for good and bad. There are pictures of some kind of moments that include warm, peaceful things, sharing with other people, and a kind of *love and caring* and these kinds of things, which I know always was in my *family*. There are several stars like small *memories*; some of them are sometimes closer and sometimes farther away and more clear. They *couldn't support* me economically, but they were not against my studies."

THE INSIGHT ACQUIRED FROM REFLECTION ON THIS CARD IS: "I understand what has happened in my *family* and I am finally at *peace*."



PROFESSORS/PERFORMERS CARD: Nautical-Octopus-Submarine

IN THIS CARD I SEE: "The ocean as the first thing, because I feel that it's in there where I always felt the music; I went inside the music and searched for things, but it also represents the *danger*, because some *teachers were supportive*, but many of them *were not*. They were not giving me the freedom - but I *took the freedom*. For that, I kind of need the octopus legs and the many different tools."

THE INSIGHT ACQUIRED FROM REFLECTION ON THIS CARD IS: "I feel more like *sympathy* towards the memories, I *forgive* them. What I felt about my *teachers* and my experiences with my *teachers*, they were affecting me a lot; but my current feelings, about back then and now, is that it feels *absurd*."

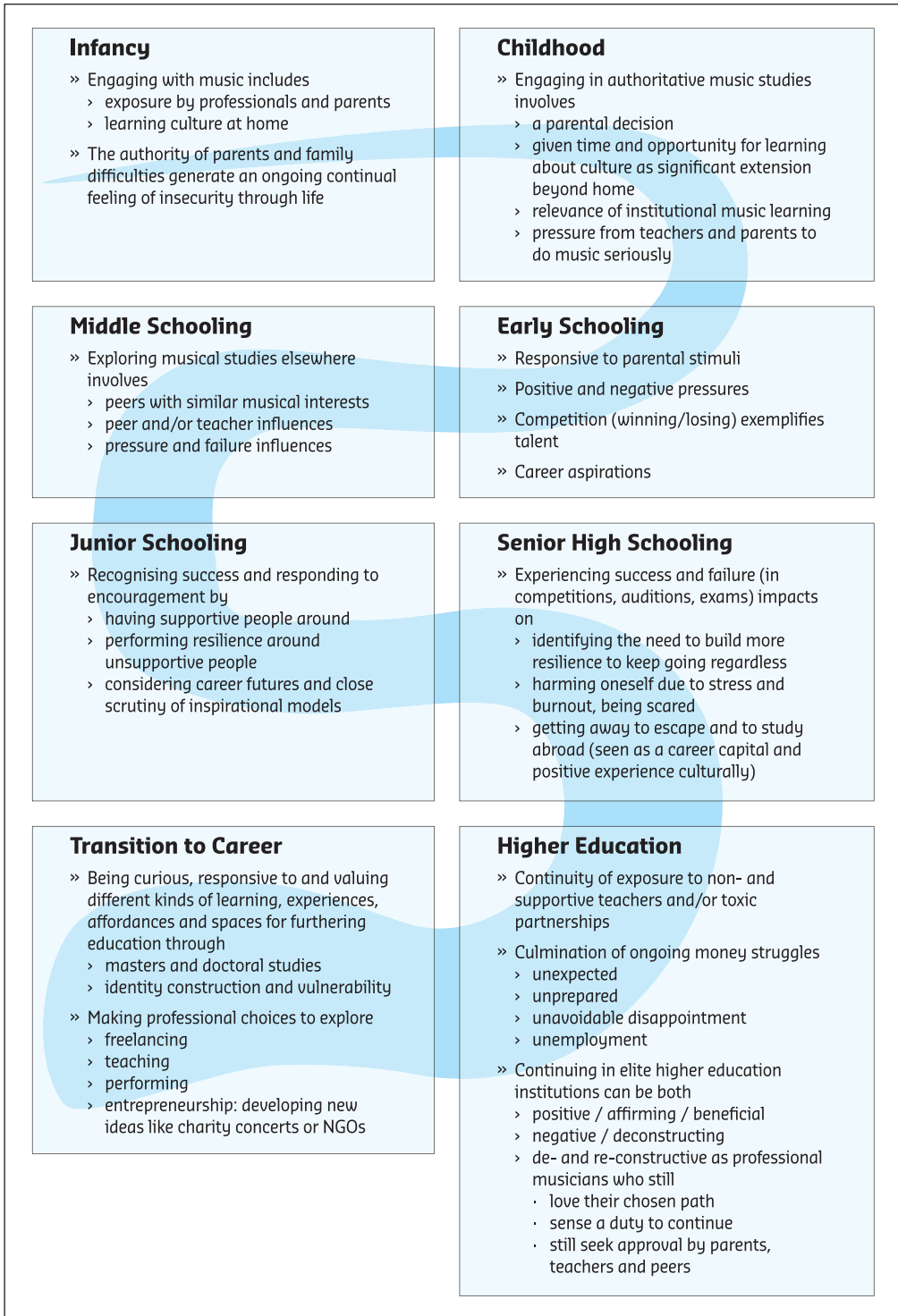


PEERS CARD: Musical-Animals-Puzzle

IN THIS CARD I SEE: "The different parts of the puzzle represent my *good friends*; sometimes they are *not friends* but people I know and who are around. There are different puzzles to fit together, and maybe I felt that I *didn't fit in as a child*. Nowadays *different puzzles offer me richness*."

THE INSIGHT ACQUIRED FROM REFLECTION ON THIS CARD IS: "I don't have to transform myself or other *people*, as a musician or as a person, to fit into a puzzle; I can just *choose or adjust*."

Figure 11. Shifts Between Phases of Education in terms of the People that Influenced the Participants' Decisions Across Their Professional Learning Pathways.



Discussion and conclusions: What (really) matters?

Responding to our first research question on the use of the Rivers of Musical Experience to access the perceptions of the participants regarding their professional learning pathways, our study found a salience of certain phases of development across all participants, regardless of their backgrounds and personal characteristics, which are intrinsically connected to formal education levels, the phases prior to entering education in infancy, and after graduating when transitioning into a career.

The use of the Rivers of Musical Experience, as well as the Dixit Cards—by their very nature as vivid tools—helped the participants in describing in a rather vivid manner that there are recognition and rupture moments that heavily informed their professional learning pathways and identity formation across the eight identified phases. The participants returned to crystallizing experiences of their professional learning pathways that connected to their choices within music learning (Cameron et al., 1995) in relation to three main societal groups: parents, professionals, and peers—all equally emphasized by these musicians. These influential societal agents were described as central to their professional learning pathways and identity construction.

As the participants acknowledged through the insights acquired from reflection on the Dixit Cards task and their testimonies in the last two phases of their professional learning pathways (higher education and transition to career), the eight phases and three main societal groups identified made the participants understand that to become lifelong learners in music, there is more to the profession than the aspects that they had studied previously, if they desire to function effectively and creatively as a musician—such as acquiring knowledge, attitudes, values, and artistic skills (e.g., Smilde, 2008).

As discussed here, the participants made decisions across their professional learning pathways according to both (a) the influences that the three groups of social agents had on their lives and (b) the learning phase they were going through informal education. In that respect, we conclude that higher music education (and other music education at lower levels of instruction) should be aware that decision making in music students is to a great extent related to the institution (where many professionals and peers surrounding students are affiliated) and level of instruction. We agree that despite the fact that some of the participants' discourses in this study point out positive experiences across the education system, we still found plenty of unsettling struggles linked to such phases across the participants—some of which continue to be present in their lives (in line with Beech et al., 2016), and include issues related to racialized privilege in the case of our Asian female participant (Martin et al., 2019).

These results with classical musicians within the higher education level expand those from earlier studies that either focused on the role of critical reflection in student musicians' metacognitive practice development (Esslin-Peard et al., 2016) or linked a multiplicity of social aspects to the construction of professional identities, and which have considered indie musicians at work (Beech et al., 2016), professional musicians working voluntarily in health settings (Preti & Welch, 2013), the diverse identities of preservice music teachers (Draves, 2014), or the transition of pianists from study to working life (Juuti & Littleton, 2012). First of all, we tackle professional identity by understanding it as a process concept that is linked to the entire learning pathway of each participant, and not to a particular present moment. Second, we do not aim to exclusively access the identity of these participants, but to provoke reflection among them and empower them to better inform their future-making decisions. Finally, we understand that, regardless of the diverse pathways of musicians, professionalism in a lifelong discipline such as music performance is dependent on identifying oneself as a learner, and that in

turn requires critically engaging with the incidents that have shaped our lives (Falsafi & Coll, 2015), which may ultimately lead to self-discovery processes such as those highlighted in our participants' discourses.

Furthermore, our study shows that authentic learning activities in higher education influence occupational identity development, as in the case of these musicians, who were studying to achieve professionalism. In this article, we have also extended the concept of "learning pathways" (as introduced by Després et al., 2016). This distinctive contribution highlights the significance of the dynamic *interplay of relationships* played by parents, professionals, and peers as key stakeholders in the negotiation and aspiration of careers in music. Given the temporality or time frame covered, we crucially illustrate how apparent shifts away from a career in music can be characterized from the acts of recognition and rupture that subsequently turn into opportunities; the significance here is for the creation of continuity and cumulative learning pathways.

Overall, this research intervention, when viewed as a critical individual-group reflective process, was cathartic for the participants as they had never had the opportunity to critically (and profoundly) reflect on their professional learning pathways and further analyze how that had informed their career and education choices. The intervention also highlighted how these students' basic psychological needs (i.e., Deci & Ryan, 2000)—*autonomy* as learners; *competence* as proficient musicians; and *relatedness* to parents, professionals, and peers—were often compromised, which can lead music students to stop their studies (e.g., Evans et al., 2012). For instance, the participants' discourse included paralyzing experiences that occurred when they were exposed to people who inhibited their learning or negatively affected their confidence, motivation, and emotion, particularly in relation to how others saw them as capable learners and professionals (in line with the acts of recognition established by Falsafi & Coll, 2015, within the learner identity theory).

These graduate musicians' accounts of critical incidents and reflection evidenced turning points along different professional learning pathways that often shared points of *self-discovery* as musicians and learners, and which lead to meaningful destinations. Here, again, the roles of recognition and rupture lead to meaningful destinations. These results expand on those focused at the university level in other educational fields, where there is a clear connection between the learner identity of graduate students as informed by these acts of recognition/rupture and the professional learning pathways that lead to meaningful destinations (Valdés et al., 2016; Yair, 2009) such as effective transitioning from creative higher education into creative professions. Understanding the nuances of professional learning pathways suggests that they are neither linear nor nonlinear, but rather navigated as "squiggly" bends of a river with currents and turbulences created by critical incidents that catalyze and create unexpected, potentially meaningful destinations radically shifting away from linear pathways to choreographic moves involving a variety of acts of recognition and rupture.

The participants attributed meaning to learning experiences and described their momentum of personal growth and understanding as learners in the complex music industry by pinpointing toward the following acts of recognition/rupture: (a) appreciating supportive figures and understanding societal impact; (b) becoming autonomous and courageous; (c) owning their feelings; (d) developing artistic agency and focusing on developing musical ideas; (e) letting go of transmissive and negative teachers, preferring constructivist ones; (f) keeping a positive attitude toward life and the profession; (g) building resilience and avoiding negative situations and people for self-protection; and (h) knowing themselves better and embracing their strong personal characteristics.

These results from employing visual-based tools in the elicitation of the participants' learner identity have implications for research, educational policy, and pedagogical development in higher music education. It signals that the students' perspectives on their professional learning pathways, their ideas about learning and about the music profession and the sociocultural world around them, as well as the critical phases they identified as crucial in their pathways require greater collaboration between higher music education institutions, parents, professors, performers, peers, policy makers, and the students themselves—all agents who belong to the learner identity model proposed by Coll and Falsafi (2010).

The use of the visual-based tools in this study proved useful when searching for answers to the research questions concerning the critical events, people, and places that participants identified as salient to their professional learning pathways. Furthermore, the methodological combination of constructivist techniques such as the Rivers of Musical Experience and the Dixit Cards were helpful in triangulating our understanding of the participants' discourse in relation to the dramatic differences that took place over time for all participants. Participants willingly raised private issues and concerns as part of their critical turns in professional learning pathways, sharing deeply, sensitive and distressing experiences that would be impertinent to raise in a traditional interview, or difficult to ascertain in open-ended questions or individual interviews. For instance, navigating manifestations of discrimination and expressing the negative impact of the power hierarchies typical of the master–apprentice tradition in classical musicians' education (e.g., Gaunt et al., 2021) are topics that some postgraduate musicians might find challenging to acknowledge while engaged as a student in an institution.

Both tools were combined in the same study for the first time and were also used for the first time in ascertaining the specific population of higher music education students through their learning histories. This, in itself, not only expands on other studies that have made use of the Rivers of Musical Experience in different populations within the arts (Burnard, 2012), but also represents a new paradigm and a relevant contribution to the field of professional musicians' education and learner identity formation. For instance, our research considerably expands recent work on reflective practices in arts education (i.e., what it means to be an expert professional practitioner in the field), as well as on creative thinking from the perspectives of sociology and philosophy of music education (e.g., Burnard, 2006; Burnard & Stahl, 2021; Westerlund & Gaunt, 2021). This previous work acknowledges the need of providing professional artists with relevant education (crafts and skills) while nurturing their roles as game changers in our challenging societies. However, in this study—by employing frameworks from the learning sciences and applying reflective interventions with classical musicians—we have also attended to the importance of linking the professional learning pathways of musicians to the acts of recognition/rupture of the stakeholders that surround them. Without this kind of critical work—that we argue should be enacted in an integrated curriculum—it becomes challenging to truly empower professional musicians as social activists while improving their experiences across the career lifespan. Furthermore, our study expands previous research on learner identities in higher education settings by including postgraduate musicians—a population whose relationships with parents, professionals, and peers is more complex and nuanced (and often longer lasting) than found in other educational settings (e.g., Yair, 2009).

Turning to the implications for future research, we suggest that it would be important to study what the benefits of similar visual-based research tools would be when applied in larger pedagogic settings. In any case, university-level music teachers should feel encouraged to use these tools with their students as powerful pedagogical resources within their instructional practices; this will help them to (a) know their students (and their professional learning

pathways) better, (b) better connect with them and their desires and needs, and (c) support them in their struggles and learning/career decisions. Furthermore, music students deeply value the learning and relationships that they encounter on their path to becoming music professionals, and thus educational settings should equip everyone involved in higher music institutions to navigate such relationships in supportive and scaffolded ways. In that regard, interventions such as the one proposed here should have a place in the music curricula for professional studies.

The study presents certain limitations. This type of design does not allow for empirically valid generalizations, as it only directly concerns the participants involved in the study. In addition, the study has a highly subjective nature and, therefore, cannot provide a respondent validation of the groups of people who performed acts of recognition and rupture as—to maintain the anonymity of the participants—we have not accessed the participants' parents, teachers, peers, or performers with whom they might have been involved. However, the findings can resonate with the direct experiences of readers. Thus, to end our piece, we would like to invite the readers of this study to reflect critically on their own crucial incidents, to understand how their life experiences reflect archetypes or cultural patterns that help situate their own professional learning pathways and reflections on theory, and to analyze which stories from this study create personal meaning(s) for them.

To make sense of an uncertain future, the analysis of critical incidents and turning points—that is critical reflective practice—is an imperative. Reflection tools that help understanding oneself and one's professional values, by demarcating power in decision making, as either defensive or offensive strategies with other professionals with others include

1. Reflective practices that help (re-)define professional students' identity (i.e., who they are in relation to others enhanced by reflecting on how values-driven practices might be reconfigured in relation to other professionals);
2. Cocreating innovative and diverse tools for reflection on practice and learning from practice in response to change is a new skill to be learnt by practitioners in (higher) music education;
3. Critically reflecting in ways that perform reflexivity as an agent for change;
4. Reflective practices as ongoing embodiment of professional practice—in which we enter and engage with, facilitate and handle challenges, and build extended professionalism—and future making.

Declaration of conflicting interests

The author(s) declared no potential conflicts of interest with respect to the research, authorship, and/or publication of this article.

Funding

The author(s) disclosed receipt of the following financial support for the research, authorship, and/or publication of this article: This work was funded by the Academy of Finland under Grant 315378 and supported by the Center for Educational Research and Academic Development in the Arts (CERADA) at the University of the Arts Helsinki.

ORCID iD

Guadalupe López-Íñiguez  <https://orcid.org/0000-0002-4428-1356>

Notes

1. A/r/tography is a concept, practice, methodology, and creative pedagogy that can be used across disciplines. A/r/tography is the unison of art, words, and being in theory, practice, and research, and articulates the practice of Artist, Teacher, and Researcher and their living inquiries in and between these roles (Heaton et al., 2020; Irwin & de Cosson, 2004; Springgay et al., 2008).
2. Images of the Dixit Cards have been downloaded from Libellud's freely accessible image bank at <https://www.libellud.com/dixit-resources/?lang=en>. We acknowledge the artwork from designer Jean-Louis Roubira and artist Marie Cardouat and Pierô.

References

- Atkinson, R. (2001). The life story interview. In J. F. Gubrium & J. A. Holstein (Eds.), *Handbook of interview research: Context and method* (pp. 121–140). SAGE.
- Baker, D. (2005). Music service teachers' life histories in the United Kingdom with implications for practice. *International Journal of Music Education*, 23(3), 263–277. <https://doi.org/10.1177/0255761405058243>
- Beech, N., Gilmore, C., Hibbert, P., & Ybema, S. (2016). Identity-in-the-work and musicians' struggles: The production of self-questioning identity work. *Work, Employment and Society*, 30(3), 506–522. <https://doi.org/10.1177/0950017015620767>
- Bennett, D. (2008). *Understanding the classical music profession: The past, the present and strategies for the future*. Ashgate.
- Bennett, D. (2019). Higher music education and the need to educate the whole musician: Musicians' work in early-, mid- and late career. In P. Pike (Ed.), *Proceedings of the 22nd International Seminar of the ISME Commission on the Education of the Professional Musician (CEPROM)* (pp. 17–28). National Library of Australia Cataloguing-in-Publication.
- Bloom, M. (2020). *For love or money? Graduate motivations and the economic returns of creative higher education inside and outside the creative industries* [Report]. Creative Industries Policy & Evidence Centre. <https://www.pec.ac.uk/assets/publications/PEC%20research%20report%20-%20For%20Love%20or%20Money.pdf>
- Bull, A. (2019). *Class, control, and classical music*. Oxford University Press.
- Burland, K., & Pitts, S. (2007). Becoming a music student: Investigating the skills and attitudes of students beginning a music degree. *Arts and Humanities in Higher Education*, 6(3), 289–308. <https://doi.org/10.1177/1474022207080847>
- Burnard, P. (2000). How children ascribe meaning to improvisation and composition: Rethinking pedagogy in music education. *Music Education Research*, 2(1), 7–23. <https://doi.org/10.1080/14613800050004404>
- Burnard, P. (2006). Rethinking the imperatives for reflective practices in arts education. In P. Burnard & S. Hennessy (Eds.), *Landscapes: The arts, aesthetics and education: Vol. 5. Reflective practices in arts education* (pp. 3–12). Springer. https://doi.org/10.1007/14020-4703-7_1
- Burnard, P. (2008). A phenomenological study of music teachers' approaches to inclusive education practices among disaffected youth. *Research Studies in Music Education*, 30(1), 59–76. <https://doi.org/10.1177/1321103X08089890>
- Burnard, P. (2012). Rethinking creative teaching and teaching as research: Mapping the critical phases that mark times of change and choosing as learners and teachers of music. *Theory Into Practice*, 51(3), 167–178. <https://doi.org/10.1080/00405841.2012.690312>
- Burnard, P. (2019). Educating professional musicians: Gender equality, career creativities and strategies for change in institutional leadership. In D. Bennett, J. Rowley & P. Schmidt (Eds.), *Leadership and musician development in higher music education* (pp. 62–89). Routledge.
- Burnard, P., & Colucci-Gray, L. (Eds.). (2019). *Why science and arts creativities matter*. Brill.
- Burnard, P., & Stahl, G. (2021). Mobilising capitals in the creative industries: An investigation of emotional and professional capital in women creatives navigating boundaryless careers. In R. Wright, G.

- Johansen, P. A. Kanellopoulos & P. Schmidt (Eds.), *The Routledge handbook to sociology of music education* (pp. 258–274). Routledge.
- Burt-Perkins, R. (2013a). Hierarchies and learning in the conservatoire: Exploring what students learn through the lens of Bourdieu. *Research Studies in Music Education*, 35(2), 197–212. <https://doi.org/10.1177/1321103X13508060>
- Burt-Perkins, R. (2013b). Learning cultures and the conservatoire: An ethnographically informed case study. *Music Education Research*, 15(2), 196–213. <https://doi.org/10.1080/14613808.2012.759551>
- Cameron, P., Mills, C., & Heinzen, T. (1995). The social context and developmental patterns of crystallizing experiences among academically talented youth. *Roeper Review*, 12(3), 197–200. <https://doi.org/10.1080/02783199509553659>
- Carey, H., Florisson, R., & Giles, L. (2019). *Skills, talent and diversity in the creative industries*. Creative Industries Policy & Evidence Centre.
- Coll, C., & Falsafi, L. (2010). Learner identity. An educational and analytical tool. *Revista de Educación*, 353, 211–233. <https://citeseerx.ist.psu.edu/viewdoc/download?doi=10.1.1.1017.6629&rep=rep1&type=pdf>
- Cook, N. (2006). Playing God: Creativity, analysis, and aesthetic inclusion. In I. Deliège & G. Wiggins (Eds.), *Musical creativity: Multidisciplinary research in theory and practice* (pp. 9–24). Psychology Press.
- Coutts, L. (2019). Empowering students to take ownership of their learning: Lessons from one piano teacher's experiences with transformative pedagogy. *International Journal of Music Education*, 37(3), 493–507. <https://doi.org/10.1177/0255761418810287>
- Davidson, J. W., & Coulam, A. (2006). Exploring jazz and classical solo singing performance behaviours: A preliminary step towards understanding performer creativity. In I. Deliège & G. Wiggins (Eds.), *Musical creativity: Multidisciplinary research in theory and practice* (pp. 181–199). Psychology Press.
- Deci, E. L., & Ryan, R. M. (2000). The “what” and “why” of goal pursuits: Human needs and the self-determination of behavior. *Psychological Inquiry*, 11, 227–268. https://doi.org/10.1207/S15327965PLI1104_01
- Denicolo, P. M. (2003). Elicitation methods to fit different purposes. In F. Fransella (Ed.), *International handbook of personal construct psychology* (pp. 123–131). John Wiley.
- Denicolo, P. M., & Pope, M. (1990). Adults learning—Teachers thinking. In C. Day, M. Pope & P. Denicolo (Eds.), *Insight into teachers thinking and practice* (pp. 155–169). Falmer.
- Després, J.-P., Burnard, P., Dubé, F., & Stévançe, S. (2016). Expert improvisers in Western classical music learning pathways. *Thinking Skills and Creativity*, 22, 167–179. <https://doi.org/10.1016/j.tsc.2016.10.006>
- Draves, T. J. (2014). Under construction: Undergraduates' perceptions of their music teacher role-identities. *Research Studies in Music Education*, 36(2), 199–214. <https://doi.org/10.1177/1321103X14547982>
- Esslin-Peard, M., Shorrocks, T., & Welch, G. F. (2016). Through the looking glass: The role of reflection in the musical maturation of classical and popular musicians at university. In D. Forrest & L. Godwin (Eds.), *Proceedings of the International Society for Music Education 32nd World Conference on Music Education* (pp. 95–105). ISME Publications.
- Evans, P., McPherson, G. E., & Davidson, J. (2012). The role of psychological needs in ceasing music and music learning activities. *Psychology of Music*, 41(5), 600–619. <https://doi.org/10.1177/0305735612441736>
- Falsafi, L., & Coll, C. (2015). Influencia educativa y actos de reconocimiento. La identidad de aprendiz, una herramienta para atribuir sentido al aprendizaje [Educational influence and acts of recognition. Learner identity, a tool to give meaning to learning]. *Papeles de Trabajo sobre Cultura, Educación y Desarrollo Humano*, 11(2), 16–19. https://www.researchgate.net/profile/Cesar-Coll-2/publication/274452553_Falsafi_L_y_Coll_C_2015_Influencia_educativa_y_actos_de_reconocimiento_La_Identidad_de_Aprendiz_una_herramienta_para_atribuir_sentido_al_aprendizaje_In_ptcedh_11_2_-_VVAA_Personas_y_sociedades_conecta/links/5714f1aa08ae071a51cff912/Falsafi-L-y-Coll-C-2015-Influencia-educativa-y-actos-de-reconocimiento-La-Identidad-de-Aprendiz-una-herramienta-para-atribuir-sentido-al-aprendizaje-In-ptcedh-11-2-VVAA-Personas-y-sociedades-cone.pdf

- Gaunt, H., López-Íñiguez, G., & Creech, A. (2021). Musical engagement in one-to-one contexts. In A. Creech, D. Hodges & S. Hallam (Eds.), *Routledge international handbook of music psychology in education and the community* (pp. 335–350). Routledge.
- Gill, R., & Pratt, A. C. (2008). In the social factory? Immaterial labour, precariousness and cultural work. *Theory, Culture & Society*, 25(7–8), 1–30. <https://doi.org/10.1177/0263276408097794>
- Griffin, M. L. (2003). Using critical incidents to promote and assess reflective thinking in preservice teachers. *Reflective Practice*, 4(2), 207–220. <https://doi.org/10.1080/14623940308274>
- Halquist, D., & Musanti, S. (2010). Critical incidents and reflection: Turning points that challenge the researcher and create opportunities for knowing. *International Journal of Qualitative Studies in Education*, 23(4), 449–461. <https://doi.org/10.1080/09518398.2010.492811>
- Heaton, R., Burnard, P., & Nicolova, A. (2020). Artography as creative pedagogy: A living inquiry with professional doctoral students. *Australian Art Education*, 41(1), 53–74. <https://doi.org/10.3316/informit.493475629428621>
- Hracs, B. J. (2010). *Working in the creative economy: The spatial dynamics of employment risk for musicians in Toronto* [Doctoral dissertation, University of Toronto]. ProQuest Dissertations and Theses Global.
- Irwin, R. L., & de Cosson, A. (Eds.). (2004). *A/r/tography: Rendering self through arts-based living*. Educational Press.
- Janesick, V. J. (1998). The dance of qualitative research design: Metaphor, methodolatry, and meaning. In N. K. Denzin & Y. S. Lincoln (Eds.), *Strategies of qualitative inquiry* (pp. 35–55). SAGE.
- Jarvis, A. (1997). *Taking a break: Preliminary investigations into the psychology of epiphanies as discontinuous change experiences* (Publication No. AAI9709611) [Doctoral dissertation, University of Massachusetts]. ProQuest Dissertations and Theses Global.
- Juuti, S., & Littleton, K. (2012). Tracing the transition from study to a contemporary creative working life: The trajectories of professional musicians. *Vocations and Learning: Studies in Vocational and Professional Education*, 5(1), 5–21. <https://doi.org/10.1007/s12186-011-9062-9>
- Kelly, G. A. (1955). *The psychology of personal constructs: A theory of personality* (Vols. 1–2). W. W. Norton.
- Lawson, A. (2014). Learner identities in the context of undergraduates: A case study. *Educational Research*, 56(3), 343–356. <https://doi.org/10.1080/00131881.2014.934557>
- López-Íñiguez, G., & Bennett, D. (2020). A lifespan perspective on multi-professional musicians: Does music education prepare classical musicians for their careers? *Music Education Research*, 22(1), 1–14. <https://doi.org/10.1007/14613808.2019.1703925>
- López-Íñiguez, G., & Bennett, D. (2021). Broadening student musicians' career horizons: The importance of being and becoming a learner in higher education. *International Journal of Music Education*, 39(2), 134–150. <https://doi.org/10.1177/0255761421989111>
- López-Íñiguez, G., & Coutts, L. (2020). Embracing a learner identity: An autoethnographic duet exploring disruptive critical incidents in instrumental music pedagogy. In H. Partti & L. Coutts (Eds.), *Proceedings of the 23rd International Seminar of the ISME Commission on the Education of the Professional Musician (CEPROM), online seminar: Ethics and inclusion in the education of professional musicians* (pp. 143–163). National Library of Australia Cataloguing-in-Publication.
- MacNamara, Á., Holmes, P., & Collins, D. (2008). Negotiating transitions in musical development: The role of psychological characteristics of developing excellence. *Psychology of Music*, 36(3), 335–352. <https://doi.org/10.1177/0305735607086041>
- Martin, L. M., Jerrard, B., & Wright, L. J. (2019). Pubscape: Innovation by design in the British pub. *International Journal of Contemporary Hospitality Management*, 31(8), 3018–3036. <https://doi.org/10.1108/IJCHM-06-2018-0537>
- Moran, S., & John-Steiner, V. (2004). How collaboration in creative work impacts identity and motivation. In D. Miell & K. Littleton (Eds.), *Collaborative creativity, contemporary perspectives* (pp. 11–25). Free Associate Books.
- Patton, M. Q. (1990). *Qualitative evaluation and research methods*. SAGE.
- Preti, C., & Welch, G. F. (2013). Professional identities and motivations of musicians playing in healthcare settings: Cross-cultural evidence from UK and Italy. *Musicae Scientiae*, 17(4), 359–375. <https://doi.org/10.1177/1029864913486664>

- Rights and Wellbeing of Racialised Groups. (2011). *The end of delivering race equality? Perspectives of front-line workers and service-users from racialised groups*. <https://www.mind.org.uk/media-a/4397/the-end-of-delivering-race-equality.pdf>
- Schediwy, L., Bhansing, P. V., & Loots, E. (2018). Young musicians' career identities: Do bohemian and entrepreneurial career identities compete or cohere? *Creative Industries Journal*, 11(2), 174–196. <https://doi.org/10.1080/17510694.2018.1489197>
- Schluter, J., Seaton, P., & Chaboyer, W. (2008). Critical incident technique: A user's guide for nurse researchers. *Journal of Advanced Nursing*, 61(1), 107–114. <https://doi.org/10.1111/j.1365-2648.2007.04490.x>
- Sfard, A., & Prusak, A. (2005). Telling identities: In search of an analytic tool for investigating learning as a culturally shaped activity. *Educational Researcher*, 34(4), 14–22. <https://10.3102/0013189X034004014>
- Smilde, R. (2008). Lifelong learners in music; research into musicians' biographical learning. *International Journal of Community Music*, 1(2), 243–252. https://doi.org/10.1386/ijcm.1.2.243_1
- Springgay, S., Irwin, R. L., Leggo, C., & Gouzouasis, P. (2008). *Being with a/r/tography*. Sense Publishers.
- Stake, R. E. (2005). Qualitative case studies. In N. K. Denzin & Y. S. Lincoln (Eds.), *The SAGE handbook of qualitative research* (3rd ed., pp. 443–466). SAGE.
- Toscher, B. (2020, February). The skills and knowledge gap in higher music education: An exploratory empirical study. *International Journal of Education & the Arts*, 21(10). <https://doi.org/10.26209/ijea21n10>
- Turner, L., & Tobbell, J. (2017). Learner identity and transition: An ethnographic exploration of undergraduate trajectories. *Journal of Further and Higher Education*, 42(5), 708–720. <https://doi.org/10.1080/0309877X.2017.1311993>
- Valdés, A., Coll, C., & Falsafi, L. (2016). Experiencias transformadoras que nos confieren identidad como aprendices: Las experiencias clave de aprendizaje [Transformative experiences that give us identity as learners: The key learning experiences]. *Perfiles Educativos*, 38(153), 168–184. <https://doi.org/10.22201/iissue.24486167e.2016.153.57643>
- Weatherbee, T. G. (2012). Critical incident case study. In A. J. Mills, G. Durepos & E. Wiebe (Eds.), *Encyclopedia of case study research* (pp. 247–248). SAGE.
- Webster, L., & Mertova, P. (2007). *Using narrative inquiry as a research method: An introduction to using critical event narrative analysis in research on learning and teaching*. Routledge/Taylor & Francis. <https://doi.org/10.4324/9780203946268>
- Westerlund, H., & Gaunt, H. (Eds.). (2021). *Expanding professionalism in music and higher music education. A changing game*. Routledge.
- Woods, P. (1997). *Experiencias críticas en la enseñanza y el aprendizaje* [Critical experiences in teaching and learning]. Paidós.
- Yair, G. (2009). Cinderellas and ugly ducklings: Positive turning points in students' educational careers—Exploratory evidence and a future agenda. *British Educational Research Journal*, 35(3), 351–370. <https://doi.org/10.1080/01411920802044388>
- Young, R. A., & Collin, A. (2004). Introduction: Constructivism and social constructionism in the career field. *Journal of Vocational Behavior*, 64(3), 373–388. <https://doi.org/10.1016/j.jvb.2003.12.005>
- Zhukov, K. (2019). Identifying skills for successful classical music careers: Implications for higher education studio teaching leadership. In J. Rowley, D. Bennett & P. Schmidt (Eds.), *Leadership on pedagogy and curriculum in higher music education* (pp. 115–132). Routledge.
- Ziechner, K. M., Tabachnick, B. R., & Densmore, K. (1987). Individual institutional and cultural influences on development of teachers' craft knowledge. In J. Calderhead (Ed.), *Exploring teachers' thinking* (pp. 21–59). Cassell.

Author biographies

Guadalupe López-Íñiguez is a professional cellist and Docent of Music Education at the Sibelius Academy, University of the Arts Helsinki (Finland) and Vice-President of the Spanish Music Psychology

Society. Her scholarly expertise in music research include cognitive and sociocultural constructivism, conceptual change, lifelong learning, musical and learner identities, employability and careers, giftedness and talent, and theories of emotion and motivation.

Pamela Burnard is Professor of Arts, Creativities and Educations at the Faculty of Cambridge (United Kingdom). Known internationally for her research on diverse creativities in music of all kinds, with 17 books authored/co-authored/edited and 100 published articles and book chapters, her work addresses crucial issues concerning music (and the arts) in contemporary society.