

Handwritten musical notation on a grand staff. The upper staff contains a melodic line with various notes and rests. The lower staff contains a bass line with notes and rests. There are some markings above the notes, possibly indicating dynamics or articulation.

Two empty grand staves, likely reserved for other parts of the composition.

*Kriantok*

Handwritten musical notation on a grand staff. The upper staff has a melodic line with notes and rests. The lower staff has a bass line. There are handwritten annotations: "ma" above the first measure, "ff" below the first measure, and "me" above the second measure. There are also some scribbles and other markings.

*Alto*

Handwritten musical notation on a grand staff. The upper staff has a melodic line with notes and rests. The lower staff has a bass line. There are handwritten annotations: "Alto" above the first measure, "truly" below the first measure, and "9." below the second measure. There are also some scribbles and other markings.

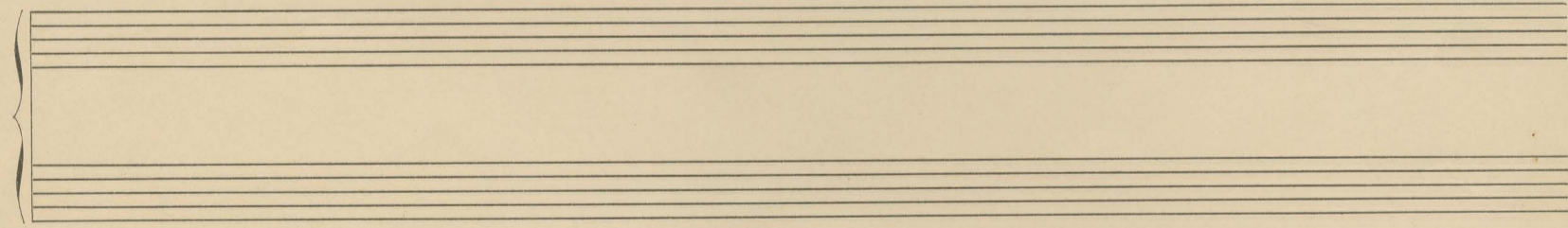
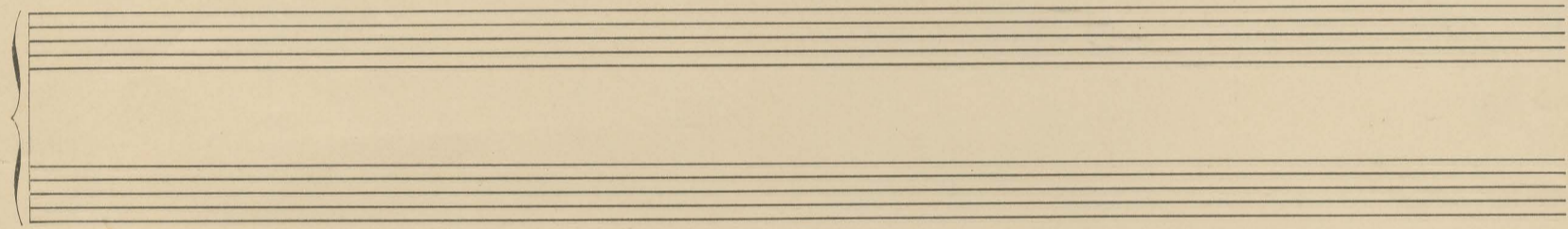
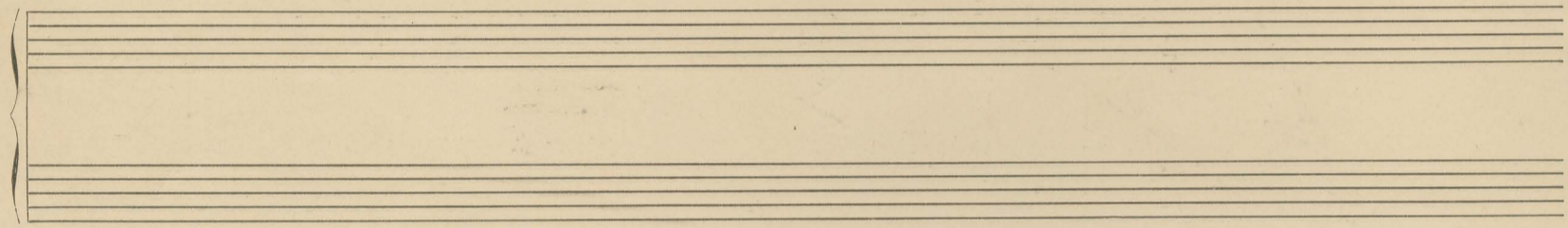
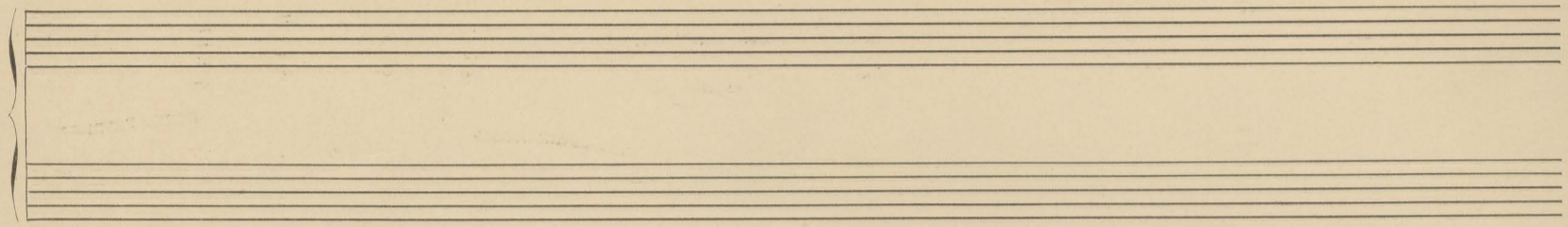
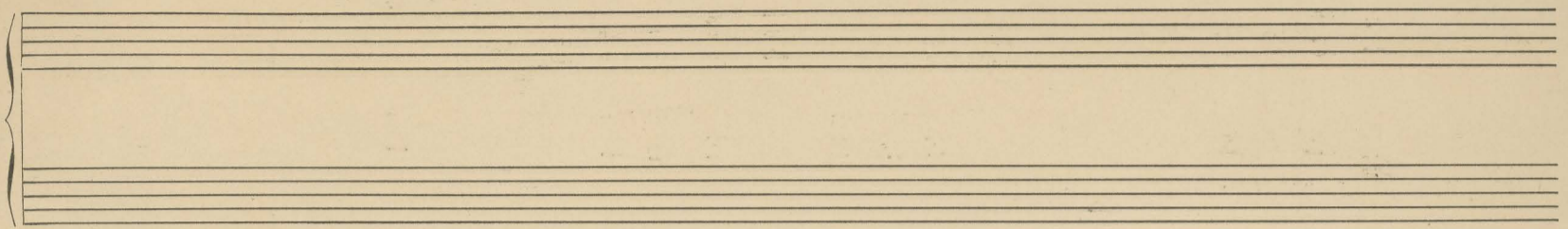
21.7.98

Handwritten musical notation on a grand staff. The upper staff has a melodic line with notes and rests. The lower staff has a bass line. There are many scribbles and markings throughout, including "ff" and "p".

*car*

Handwritten musical notation on a grand staff. The upper staff has a melodic line with notes and rests. The lower staff has a bass line. There are many scribbles and markings throughout, including "p" and "ff".

Handwritten scribbles and markings at the bottom right corner of the page.



*Waldstück*

Handwritten musical notation on a grand staff. The upper staff is in treble clef with a common time signature (C). It contains a melodic line with a slur over the first two measures and the word "bis" written above it. The lower staff is in bass clef with a key signature of one flat (B-flat) and a common time signature (C). It contains a bass line with some rhythmic markings. A vertical line is drawn at the end of the piece.

A handwritten signature or initials in the bottom right corner of the page.