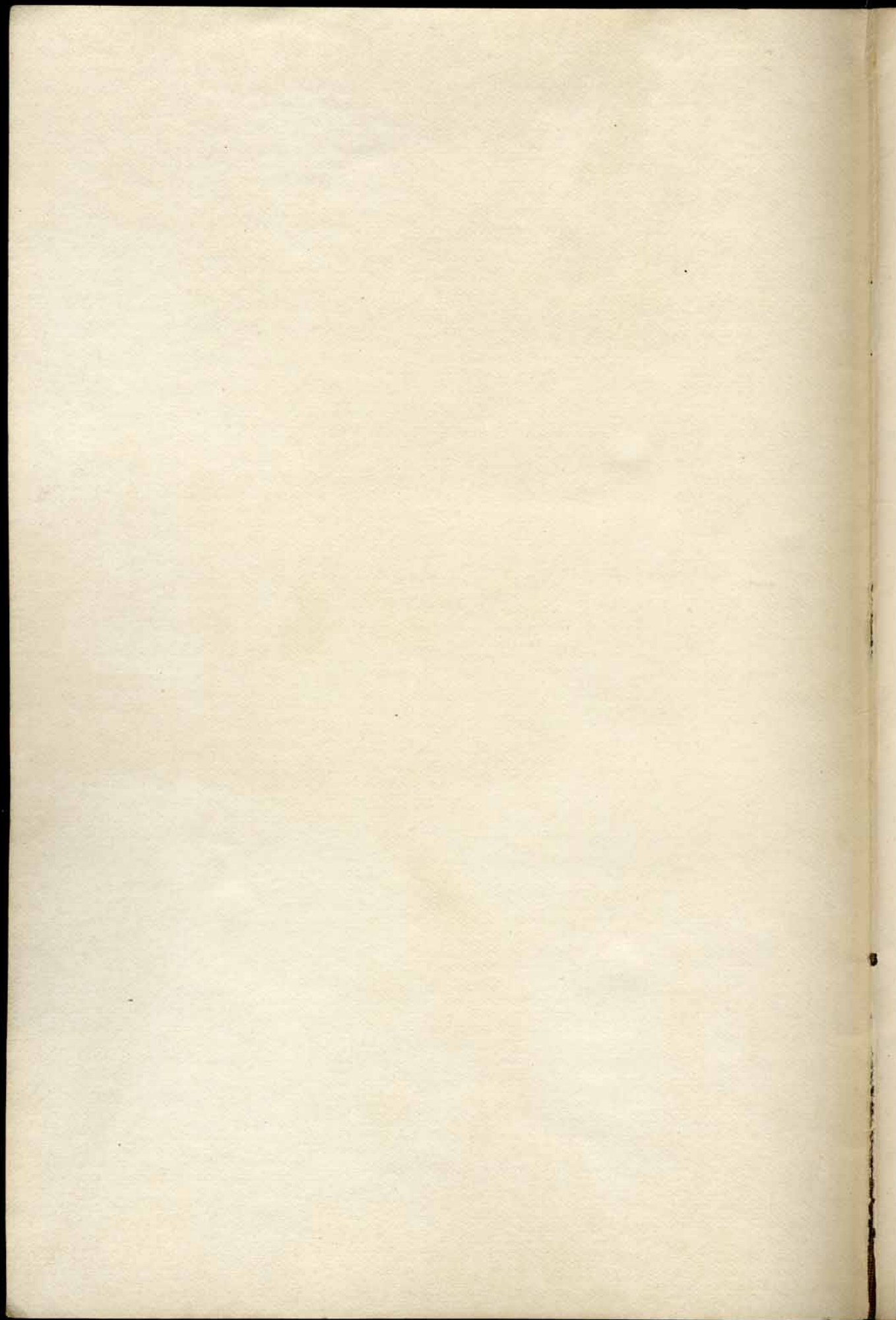
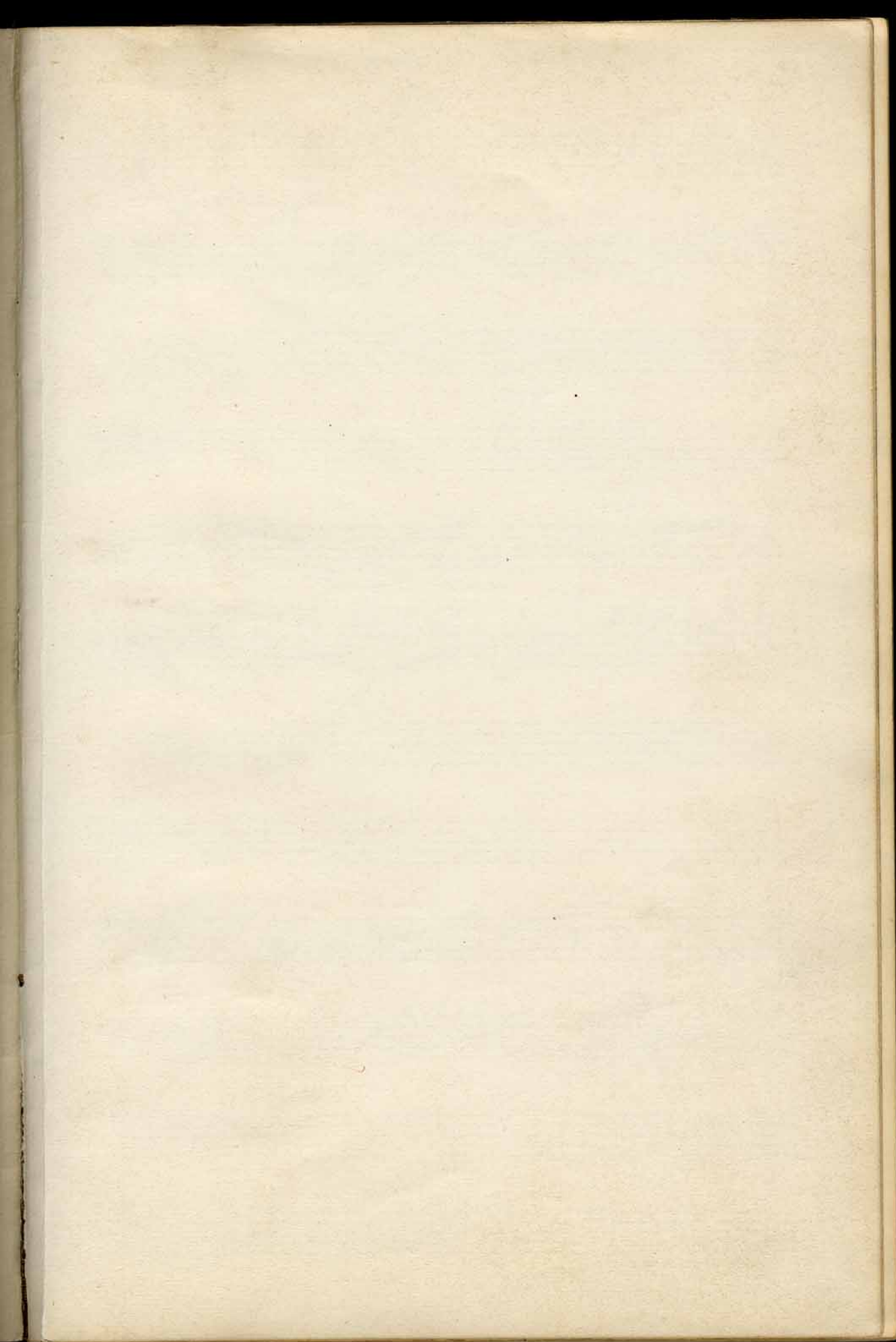


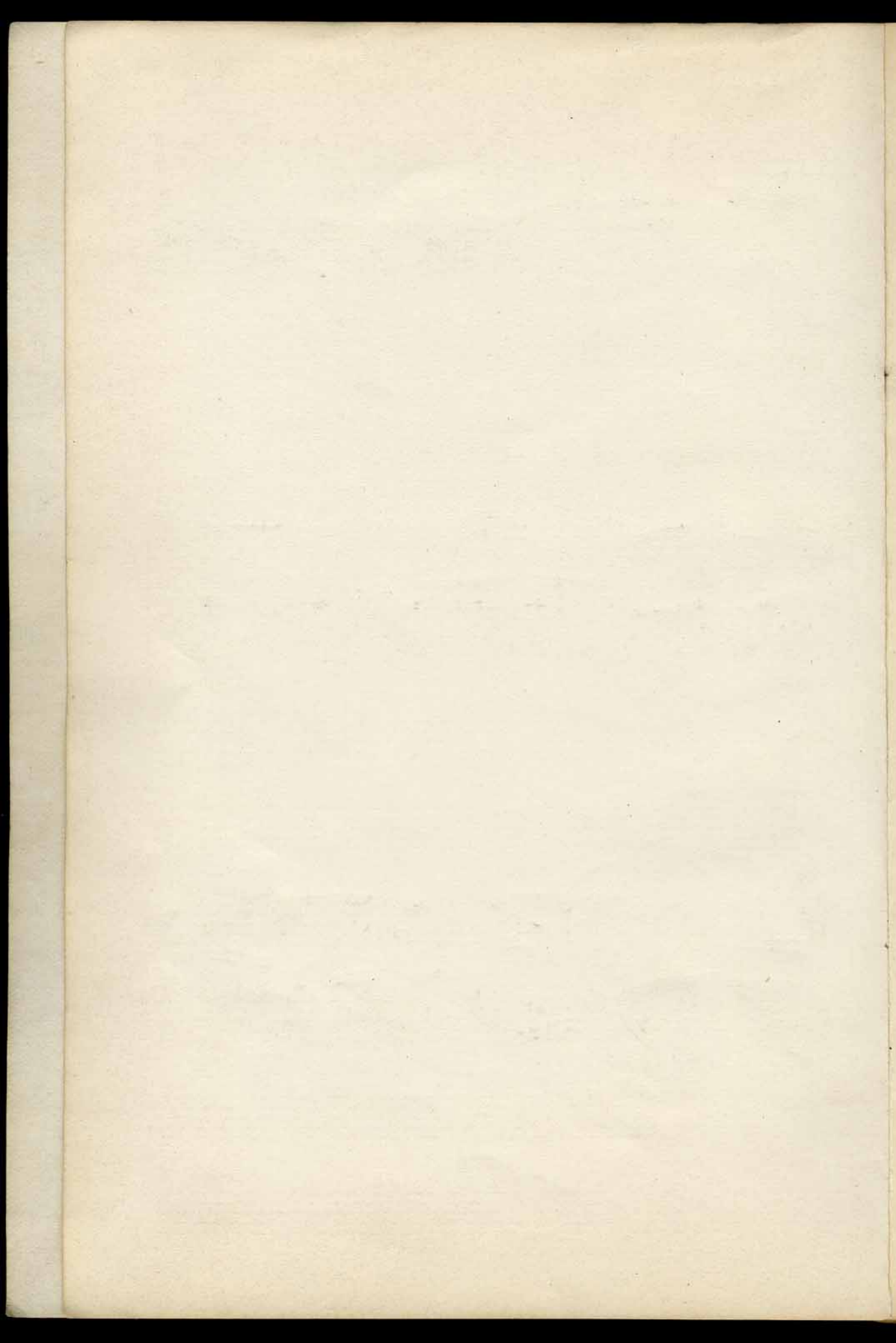


EX LIBRIS MARTIN WEGELIUS.  
HELSINGFORS MUSIKINSTITUTS  
BIBLIOTHEK.

Afdelning *O.C.* No *7.*  
*M. Wegelius.*  
*Wikari till "Ur Finlands*  
*Toukråv."*







Us Finland tustkai

M. Wegelius.

The first system of handwritten musical notation consists of two staves. The upper staff is in treble clef and the lower staff is in bass clef. The time signature is 3/8. The music begins with a key signature of one flat (B-flat). The first two measures show a melodic line in the treble clef and a bass line in the bass clef. The next two measures continue the melody and bass line. The final measure of the system ends with a double bar line and a fermata over the final note.

A set of five empty musical staves, consisting of five horizontal lines.

A set of five empty musical staves, consisting of five horizontal lines.

The second system of handwritten musical notation consists of two staves. The upper staff is in treble clef and the lower staff is in bass clef. The music continues from the first system. The treble clef staff contains a melodic line with various note values and rests. The bass clef staff contains a bass line with chords and single notes. The system concludes with a double bar line and a fermata over the final note.

A set of five empty musical staves, consisting of five horizontal lines.

A set of five empty musical staves, consisting of five horizontal lines.

The third system of handwritten musical notation consists of two staves. The upper staff is in treble clef and the lower staff is in bass clef. The music continues from the second system. The treble clef staff contains a melodic line with various note values and rests. The bass clef staff contains a bass line with chords and single notes. The system concludes with a double bar line and a fermata over the final note.

A set of five empty musical staves, consisting of five horizontal lines.

A set of five empty musical staves, consisting of five horizontal lines.

Handwritten musical notation for the first system. The system consists of two staves: a treble clef staff and a bass clef staff. The key signature is one flat (B-flat). The treble staff contains a melodic line with eighth and sixteenth notes, some beamed together. The bass staff contains a more complex accompaniment with many beamed notes, some of which are slurred. There are several measures of music, with some notes marked with a sharp sign (#).

A set of empty musical staves, consisting of two five-line staves.

A set of empty musical staves, consisting of two five-line staves.

Handwritten musical notation for the second system. The system consists of two staves: a treble clef staff and a bass clef staff. The key signature is one flat (B-flat). The treble staff contains a melodic line with eighth and sixteenth notes. The bass staff contains a complex accompaniment with many beamed notes, some of which are slurred. There are several measures of music.

A set of empty musical staves, consisting of two five-line staves.

A set of empty musical staves, consisting of two five-line staves.

Handwritten musical notation for the third system. The system consists of two staves: a treble clef staff and a bass clef staff. The key signature is one flat (B-flat). The treble staff contains a melodic line with eighth and sixteenth notes. The bass staff contains a complex accompaniment with many beamed notes, some of which are slurred. There are several measures of music.

A set of empty musical staves, consisting of two five-line staves.

A set of empty musical staves, consisting of two five-line staves.

Handwritten musical score system 1, consisting of two staves. The upper staff contains a melodic line with various note values and rests. The lower staff contains a bass line with chords and rhythmic markings. A large bracket above the system is labeled with the Roman numeral 'I'. The key signature is one flat (B-flat) and the time signature is 6/8.

Empty musical staff.

Empty musical staff.

Handwritten musical score system 2, consisting of two staves. The upper staff contains a melodic line with various note values and rests. The lower staff contains a bass line with chords and rhythmic markings. A large bracket above the system is labeled with the Roman numeral 'II'. The key signature is one flat (B-flat) and the time signature is 6/8.

Empty musical staff.

Empty musical staff.

Handwritten musical score system 3, consisting of two staves. The upper staff contains a melodic line with various note values and rests. The lower staff contains a bass line with chords and rhythmic markings. The key signature is one flat (B-flat) and the time signature is 6/8.

Empty musical staff.

Empty musical staff.

Handwritten musical notation for the first system, featuring a grand staff with treble and bass clefs, a key signature of one flat, and a 6/8 time signature. The notation includes various note values, rests, and slurs.

A set of five empty musical staves.

A set of five empty musical staves.

Handwritten musical notation for the second system, starting with a cross symbol on the left. It features a grand staff with treble and bass clefs, containing complex rhythmic patterns and slurs.

A set of five empty musical staves.

A set of five empty musical staves.

Handwritten musical notation for the third system, featuring a grand staff with treble and bass clefs and some initial notes.

A set of five empty musical staves.

A set of five empty musical staves.

Handwritten musical notation for the first system. The top staff is a treble clef with a common time signature (C). The bottom staff is a grand staff with piano accompaniment, showing a series of ascending and descending eighth notes. There are several 'x' marks under the piano staff, likely indicating fingerings or specific notes. The notation is in a single system with a repeat sign at the end.

A set of empty musical staves, consisting of two five-line staves.

A set of empty musical staves, consisting of two five-line staves.

Handwritten musical notation for the second system. The top staff is a treble clef with a common time signature (C). The bottom staff is a grand staff with piano accompaniment, showing a series of ascending and descending eighth notes. There are several 'x' marks under the piano staff, likely indicating fingerings or specific notes. The notation is in a single system with a repeat sign at the end.

A set of empty musical staves, consisting of two five-line staves.

A set of empty musical staves, consisting of two five-line staves.

Handwritten musical notation for the third system. The top staff is a treble clef with a common time signature (C). The bottom staff is a grand staff with piano accompaniment, showing a series of ascending and descending eighth notes. There are several 'x' marks under the piano staff, likely indicating fingerings or specific notes. The notation is in a single system with a repeat sign at the end.

A set of empty musical staves, consisting of two five-line staves.

A set of empty musical staves, consisting of two five-line staves.

Handwritten musical notation for the first system. The system consists of two staves joined by a brace on the left. The top staff is in treble clef, and the bottom staff is in bass clef. The key signature is two sharps (F# and C#), and the time signature is 9/8. The notation includes various note values, rests, and dynamic markings such as *f* and *ff*.

Two empty musical staves, each consisting of five horizontal lines.

Handwritten musical notation for the second system. The system consists of two staves joined by a brace on the left. The top staff is in treble clef, and the bottom staff is in bass clef. The key signature is two sharps (F# and C#), and the time signature is 9/8. The notation includes various note values, rests, and dynamic markings such as *f* and *ff*.

Two empty musical staves, each consisting of five horizontal lines.

Handwritten musical notation for the third system. The system consists of two staves joined by a brace on the left. The top staff is in treble clef, and the bottom staff is in bass clef. The key signature is two sharps (F# and C#), and the time signature is 9/8. The notation includes various note values, rests, and dynamic markings such as *f* and *ff*.

Two empty musical staves, each consisting of five horizontal lines.

Handwritten musical notation on a grand staff. The upper staff contains a melodic line with several notes, including a dotted quarter note and an eighth note. The lower staff is empty.

Empty musical staff.

Empty musical staff.

Handwritten musical notation on a grand staff. The upper staff contains a melodic line with several notes, including a dotted quarter note and an eighth note. The lower staff contains a bass line with several notes, including a dotted quarter note and an eighth note.

Empty musical staff.

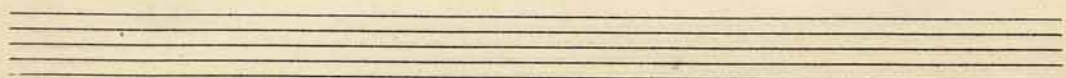
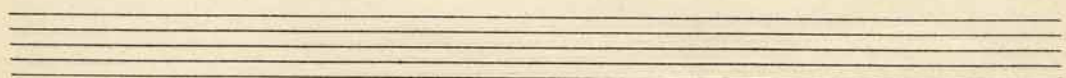
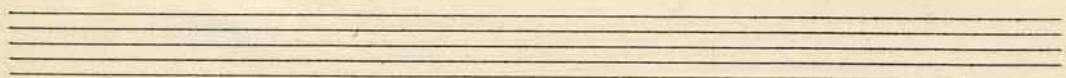
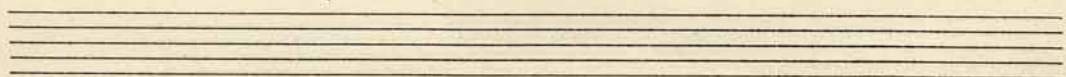
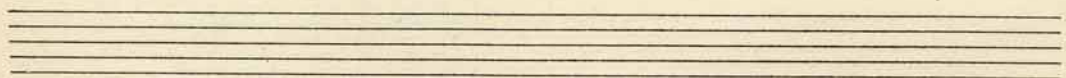
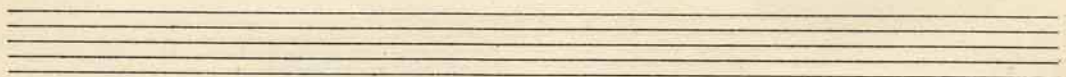
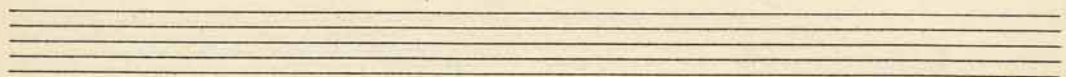
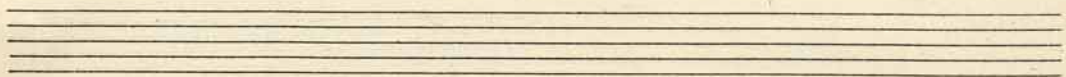
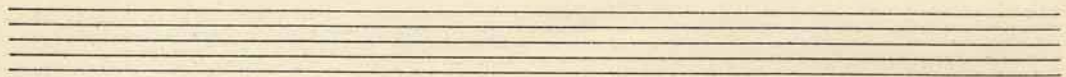
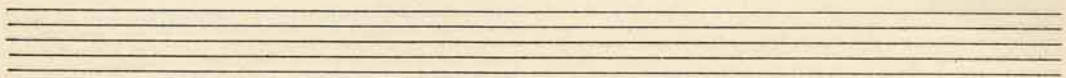
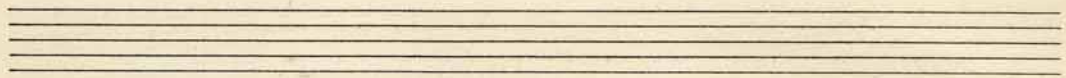
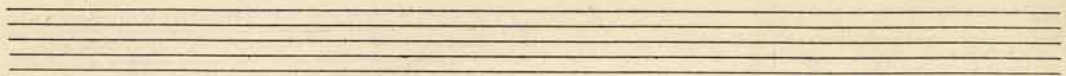
Empty musical staff.

Empty musical staff.

Empty musical staff.

Empty musical staff.

Empty musical staff.



Handwritten musical notation on a grand staff. The upper staff contains a melodic line with eighth and sixteenth notes, including some beamed sixteenth notes. The lower staff contains a bass line with quarter and eighth notes. The system concludes with a double bar line.

A single empty musical staff consisting of five horizontal lines.

A single empty musical staff consisting of five horizontal lines.

Handwritten musical notation on a grand staff. The upper staff features a melodic line with eighth notes and some beamed sixteenth notes. The lower staff contains a bass line with quarter notes and eighth notes, including some beamed eighth notes. The system concludes with a double bar line.

A single empty musical staff consisting of five horizontal lines.

A single empty musical staff consisting of five horizontal lines.

Handwritten musical notation on a grand staff. The upper staff contains a melodic line with eighth notes and some beamed sixteenth notes. The lower staff contains a bass line with quarter and eighth notes. The system concludes with a double bar line.

A single empty musical staff consisting of five horizontal lines.

A single empty musical staff consisting of five horizontal lines.

Handwritten musical notation on a grand staff. The upper staff (treble clef) contains a series of notes, including a half note G4, followed by a quarter note A4, and a series of eighth notes. The lower staff (bass clef) contains a half note G3, followed by a quarter note A3, and a series of eighth notes. There are some corrections and markings above the notes.

Two empty grand staves, each consisting of a treble clef staff and a bass clef staff.

Two empty grand staves, each consisting of a treble clef staff and a bass clef staff.

Handwritten musical notation on a grand staff. The upper staff (treble clef) contains a half note G4, followed by a quarter note A4, and a series of eighth notes. The lower staff (bass clef) contains a half note G3, followed by a quarter note A3, and a series of eighth notes.

Handwritten musical notation on a grand staff. The upper staff (treble clef) contains a half note G4, followed by a quarter note A4, and a series of eighth notes. The lower staff (bass clef) contains a half note G3, followed by a quarter note A3, and a series of eighth notes. There are some corrections and markings above the notes.

Handwritten musical notation on a grand staff. The upper staff (treble clef) contains a half note G4, followed by a quarter note A4, and a series of eighth notes. The lower staff (bass clef) contains a half note G3, followed by a quarter note A3, and a series of eighth notes. There are some corrections and markings above the notes.

Handwritten musical notation on a grand staff. The upper staff (treble clef) contains a half note G4, followed by a quarter note A4, and a series of eighth notes. The lower staff (bass clef) contains a half note G3, followed by a quarter note A3, and a series of eighth notes.

Handwritten musical notation for the first system, featuring a treble and bass clef with a key signature of two sharps (F# and C#). The music consists of several measures of notes and rests, with some notes beamed together.

A set of five empty musical staves.

A set of five empty musical staves.

Handwritten musical notation for the second system, continuing the piece with treble and bass clefs.

Handwritten musical notation for the third system, including Chinese lyrics written below the notes.

Handwritten musical notation for the fourth system, with lyrics continuing below the notes.

Handwritten musical notation for the fifth system, featuring a large 'X' mark above the staff and some numerical annotations.

Handwritten musical notation on a grand staff. The top staff is in treble clef and the bottom staff is in bass clef. The key signature is one sharp (F#). The melody in the treble clef consists of a series of eighth and sixteenth notes, with some rests. The bass clef staff contains some faint, less distinct notation.

A set of five empty musical staves, consisting of two grand staves (treble and bass clefs) and three individual staves.

A set of five empty musical staves, consisting of two grand staves (treble and bass clefs) and three individual staves.

Handwritten musical notation on a grand staff. The top staff is in treble clef and the bottom staff is in bass clef. The melody in the treble clef continues with eighth and sixteenth notes. The bass clef staff is mostly empty.

A set of five empty musical staves, consisting of two grand staves (treble and bass clefs) and three individual staves.

A set of five empty musical staves, consisting of two grand staves (treble and bass clefs) and three individual staves.

Handwritten musical notation on a grand staff. The top staff is in treble clef and the bottom staff is in bass clef. The melody in the treble clef continues with eighth and sixteenth notes. The bass clef staff is mostly empty.

A set of five empty musical staves, consisting of two grand staves (treble and bass clefs) and three individual staves.

A set of five empty musical staves, consisting of two grand staves (treble and bass clefs) and three individual staves.

Handwritten musical notation for the first system, featuring a grand staff with treble and bass clefs, a key signature of two sharps (F# and C#), and a 4/4 time signature. The notation includes various notes, rests, and slurs across eight measures.

A set of five empty musical staves.

A set of five empty musical staves.

Handwritten musical notation for the second system, featuring a grand staff with treble and bass clefs, a key signature of two sharps (F# and C#), and a 4/4 time signature. The notation includes various notes, rests, and slurs across eight measures.

A set of five empty musical staves.

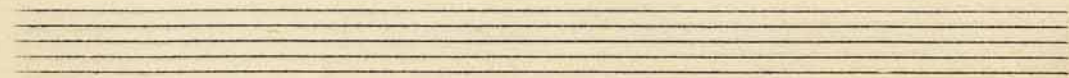
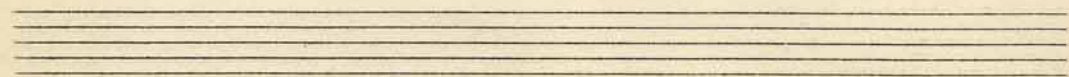
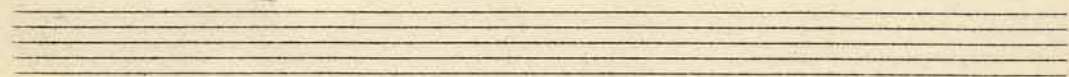
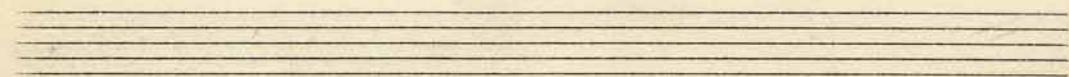
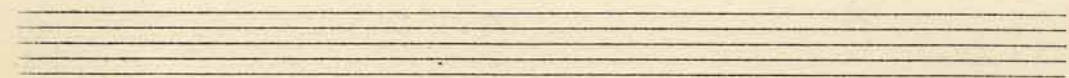
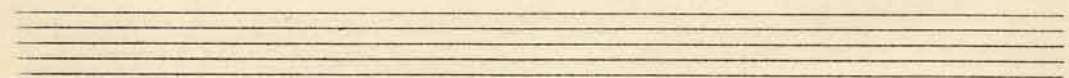
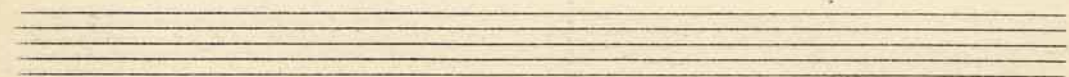
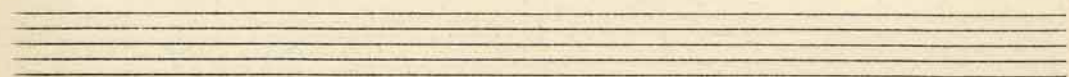
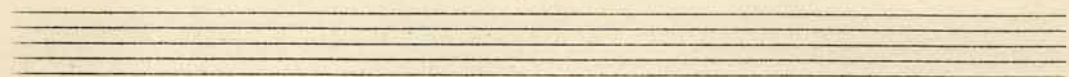
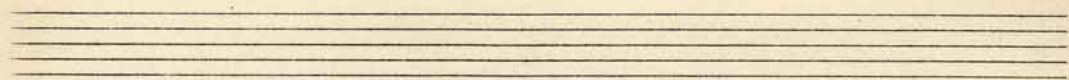
A set of five empty musical staves.

Handwritten musical notation for the third system, featuring a grand staff with treble and bass clefs, a key signature of two sharps (F# and C#), and a 4/4 time signature. The notation includes various notes, rests, and slurs across eight measures.

A set of five empty musical staves.

A set of five empty musical staves.

Handwritten musical notation on a grand staff, consisting of two staves joined by a brace on the left. The notation includes various notes, rests, and accidentals, with some notes marked with an 'x'. The piece concludes with a double bar line and repeat dots.



Handwritten musical notation for the first system, featuring a grand staff with treble and bass clefs. The music includes various note values, rests, and dynamic markings such as 'p' and 'f'. A fermata is present over a note in the bass staff.

A set of five empty musical staves.

A set of five empty musical staves.

Handwritten musical notation for the second system, featuring a grand staff with treble and bass clefs. The music includes various note values, rests, and dynamic markings such as 'p' and 'f'.

A set of five empty musical staves.

A set of five empty musical staves.

Handwritten musical notation for the third system, featuring a grand staff with treble and bass clefs. The music includes various note values, rests, and dynamic markings such as 'p' and 'f'.

A set of five empty musical staves.

A set of five empty musical staves.

Handwritten musical notation for the first system, featuring a grand staff with treble and bass clefs. The music includes various note values, rests, and dynamic markings.

A set of five empty musical staves.

A set of five empty musical staves.

Handwritten musical notation for the second system, featuring a grand staff with treble and bass clefs. The music includes various note values, rests, and dynamic markings.

A set of five empty musical staves.

A set of five empty musical staves.

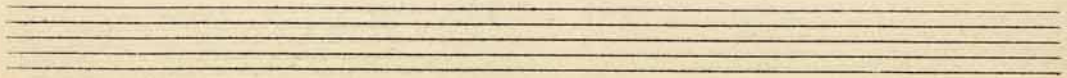
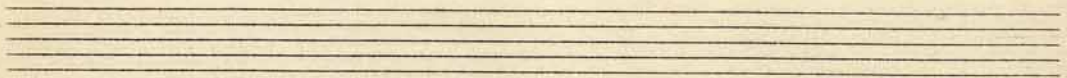
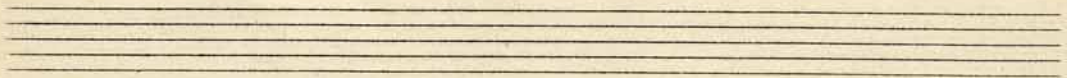
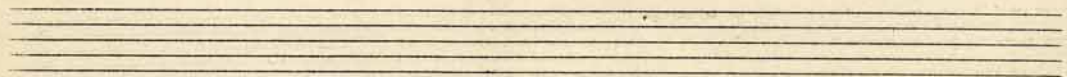
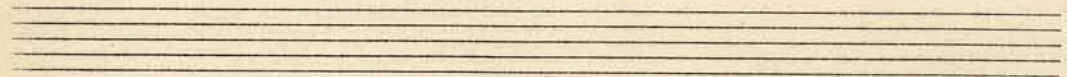
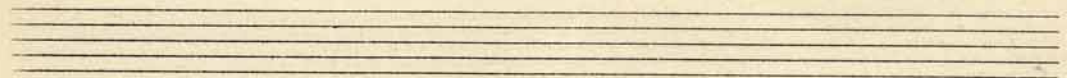
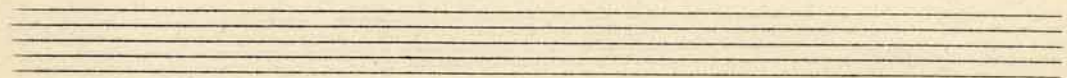
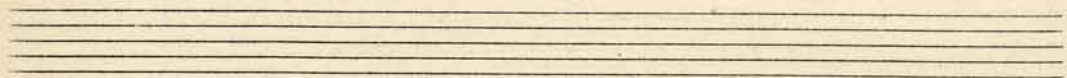
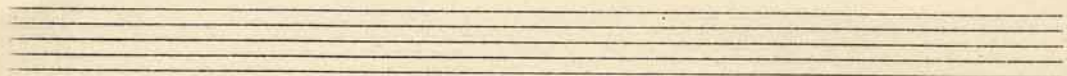
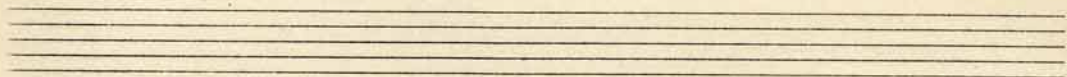
Handwritten musical notation for the third system, featuring a grand staff with treble and bass clefs. The music includes various note values, rests, and dynamic markings.

A set of five empty musical staves.

A set of five empty musical staves.



Handwritten musical notation on a grand staff. The top staff is in treble clef and contains a melodic line starting with a quarter note, followed by an eighth note, and ending with a quarter note. The bottom staff is in bass clef and contains a bass line starting with a quarter note, followed by an eighth note, and ending with a quarter note. The notation is written in dark ink on aged paper.



Handwritten musical notation on a grand staff. The top staff is a treble clef with a key signature of one sharp (F#) and a 4/4 time signature. It contains a melody of quarter notes: F#4, G4, A4, B4, C5, B4, A4, G4, F#4. The bottom staff is a bass clef with a key signature of one sharp (F#) and a 4/4 time signature. It contains chords: F#4-G4-A4-B4, F#4-G4-A4-B4, and F#4-G4-A4-B4, with rests in the second and third measures. The notation is handwritten and includes some corrections.

A set of five empty musical staves.

A set of five empty musical staves.

A set of five empty musical staves.

A set of five empty musical staves.

A set of five empty musical staves.

A set of five empty musical staves.

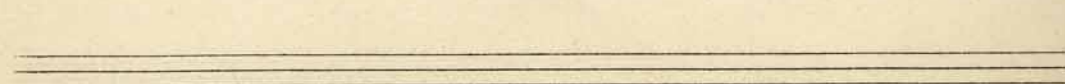
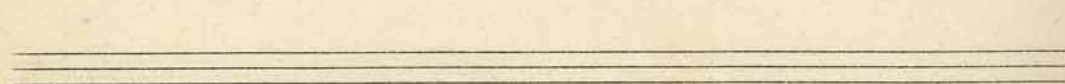
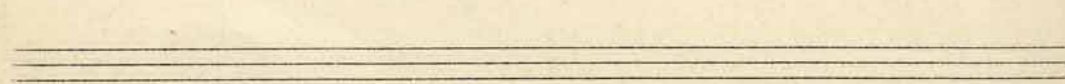
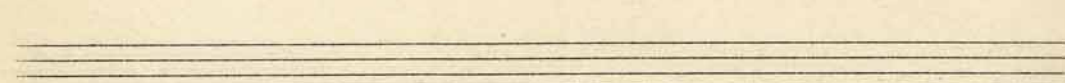
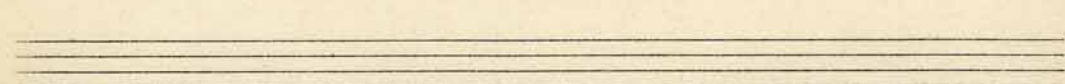
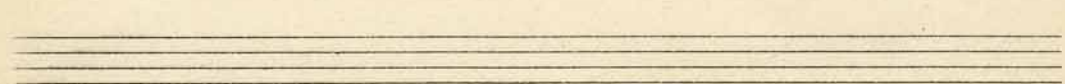
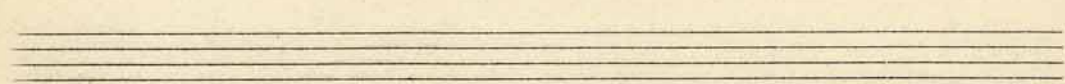
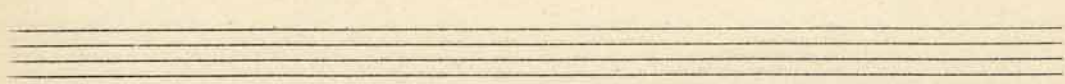
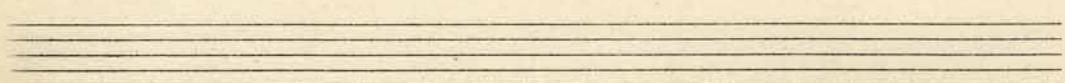
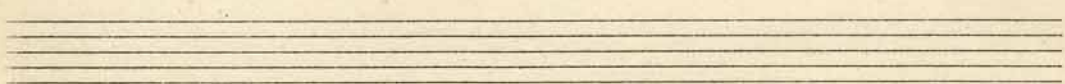
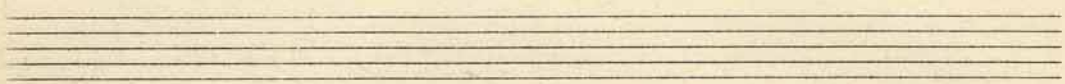
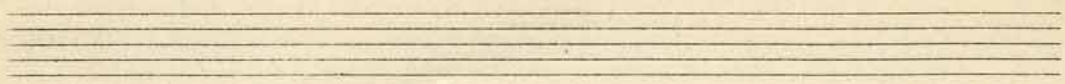
A set of five empty musical staves.

A set of five empty musical staves.

A set of five empty musical staves.

A set of five empty musical staves.

A set of five empty musical staves.



The first system of handwritten musical notation consists of two staves. The upper staff is in treble clef with a key signature of two flats and a 6/8 time signature. It contains a melodic line with several notes, some marked with '+' signs, and a final note with a fermata. The lower staff is in bass clef with a 6/8 time signature. It features a rhythmic accompaniment of eighth notes, also marked with '+' signs, and includes a double bar line with a repeat sign.

A set of three empty musical staves, consisting of two treble clef staves and one bass clef staff.

A set of three empty musical staves, consisting of two treble clef staves and one bass clef staff.

The second system of handwritten musical notation consists of two staves. The upper staff continues the melodic line from the first system, ending with a fermata. The lower staff continues the rhythmic accompaniment with eighth notes, some marked with '+' signs, and includes a double bar line with a repeat sign.

A set of three empty musical staves, consisting of two treble clef staves and one bass clef staff.

A set of three empty musical staves, consisting of two treble clef staves and one bass clef staff.

The third system of handwritten musical notation consists of two staves. The upper staff features a melodic line with notes and rests, including a fermata. The lower staff features a rhythmic accompaniment of eighth notes, some marked with '+' signs, and includes a double bar line with a repeat sign.

A set of three empty musical staves, consisting of two treble clef staves and one bass clef staff.

A set of three empty musical staves, consisting of two treble clef staves and one bass clef staff.

Handwritten musical notation for the first system. The top staff is a grand staff with treble and bass clefs, containing a melodic line with various notes and rests. The bottom staff is a piano accompaniment with dense chords and slurs, indicating a complex harmonic structure. The notation is in a single system with a vertical bar line.

Handwritten musical notation for the second system, consisting of two systems of grand staff notation. The top system has a melodic line and a piano accompaniment with dense chords and slurs. The bottom system continues the melodic and accompaniment lines, with a vertical bar line separating the two systems.

Handwritten musical notation for the third system. The top staff is a grand staff with treble and bass clefs, containing a melodic line with various notes and rests. The bottom staff is a piano accompaniment with dense chords and slurs, indicating a complex harmonic structure. The notation is in a single system with a vertical bar line.

*f.*

Handwritten musical notation for the first system. The right hand contains a melodic line with slurs and a piano (*p*) dynamic marking. The left hand features a complex rhythmic accompaniment with many notes and slurs.

Two empty musical staves.

Handwritten musical notation for the second system. The right hand contains a melodic line with slurs and a piano (*p*) dynamic marking. The left hand features a complex rhythmic accompaniment with many notes and slurs.

Two empty musical staves.

Handwritten musical notation for the third system. The right hand contains a melodic line with slurs and a piano (*p*) dynamic marking. The left hand features a complex rhythmic accompaniment with many notes and slurs.

Two empty musical staves.

Handwritten musical notation for the first system, featuring a treble clef, a key signature of one sharp (F#), and a 3/4 time signature. The right hand contains a melodic line with a slur over the first two measures and a fermata over the final note. The left hand features a rhythmic accompaniment of eighth notes with stems pointing up, some marked with '+' signs. The system concludes with a double bar line and a repeat sign.

Handwritten musical notation for the second system, continuing the piece. The right hand has a melodic line with a slur and a fermata. The left hand continues with eighth-note accompaniment, including some notes with '+' signs and a '3 2 1' marking above a group of notes. The system ends with a double bar line and a repeat sign.

Handwritten musical notation for the third system, which is circled in pencil. The right hand features a melodic line with various accidentals and a fermata. The left hand has eighth-note accompaniment with '+' signs and a 'd' marking above a note. The system concludes with a double bar line and a repeat sign.

Handwritten musical notation for the first system. The system consists of two staves: a treble clef staff and a bass clef staff. The time signature is 6/4. The treble staff contains a melody of quarter notes: G4, A4, B4, C5, D5, E5, F5, G5, A5, B5, C6, D6, E6, F6, G6, A6, B6, C7. The bass staff contains a complex accompaniment with many beamed notes and some accidentals. The notes are: G2, A2, B2, C3, D3, E3, F3, G3, A3, B3, C4, D4, E4, F4, G4, A4, B4, C5, D5, E5, F5, G5, A5, B5, C6, D6, E6, F6, G6, A6, B6, C7.

Handwritten musical notation for the second system. The system consists of two staves: a treble clef staff and a bass clef staff. The time signature is 6/4. The treble staff contains a melody of quarter notes: G4, A4, B4, C5, D5, E5, F5, G5, A5, B5, C6, D6, E6, F6, G6, A6, B6, C7. The bass staff contains a complex accompaniment with many beamed notes and some accidentals. The notes are: G2, A2, B2, C3, D3, E3, F3, G3, A3, B3, C4, D4, E4, F4, G4, A4, B4, C5, D5, E5, F5, G5, A5, B5, C6, D6, E6, F6, G6, A6, B6, C7.

Handwritten musical notation for the third system. The system consists of two staves: a treble clef staff and a bass clef staff. The time signature is 6/4. The treble staff contains a melody of quarter notes: G4, A4, B4, C5, D5, E5, F5, G5, A5, B5, C6, D6, E6, F6, G6, A6, B6, C7. The bass staff contains a complex accompaniment with many beamed notes and some accidentals. The notes are: G2, A2, B2, C3, D3, E3, F3, G3, A3, B3, C4, D4, E4, F4, G4, A4, B4, C5, D5, E5, F5, G5, A5, B5, C6, D6, E6, F6, G6, A6, B6, C7.

⊗



*And.*

Handwritten musical notation for the first system, consisting of a treble and bass staff. The treble staff contains a melodic line with eighth and sixteenth notes, while the bass staff provides a harmonic accompaniment with chords and single notes. The notation is in a cursive, handwritten style.

Two empty musical staff lines, one for the treble clef and one for the bass clef, positioned below the first system.

Two empty musical staff lines, one for the treble clef and one for the bass clef, positioned below the second system.

Handwritten musical notation for the second system, consisting of a treble and bass staff. The notation continues from the first system. A 'ped' marking is present in the bass staff towards the end of the system, indicating a pedal point.

Two empty musical staff lines, one for the treble clef and one for the bass clef, positioned below the second system.

Two empty musical staff lines, one for the treble clef and one for the bass clef, positioned below the third system.

Handwritten musical notation for the third system, consisting of a treble and bass staff. The notation concludes the piece. A circled 'X' symbol is drawn to the right of the final measure of the bass staff.

Two empty musical staff lines, one for the treble clef and one for the bass clef, positioned below the third system.

Two empty musical staff lines, one for the treble clef and one for the bass clef, positioned below the fourth system.



Handwritten musical notation for the first system, consisting of a grand staff with two staves. The upper staff contains a melodic line with eighth and sixteenth notes. The lower staff contains a bass line with chords and rests.

Two empty musical staves for the first system.

Two empty musical staves for the second system.

Handwritten musical notation for the second system, consisting of a grand staff with two staves. The upper staff features a complex melodic line with many beamed notes. The lower staff contains a bass line with chords and rests.

Two empty musical staves for the second system.

Two empty musical staves for the third system.

Handwritten musical notation for the third system, consisting of a grand staff with two staves. The upper staff contains a melodic line with some accidentals. The lower staff contains a bass line with chords and rests.

Two empty musical staves for the third system.

Two empty musical staves for the fourth system.

Handwritten musical notation for the first system. The right hand part consists of a simple melody with quarter and eighth notes. The left hand part is a complex accompaniment with many beamed notes and slurs, suggesting a fast or intricate rhythmic pattern. The key signature is one sharp (F#) and the time signature is 4/4.

A set of five empty musical staves.

A set of five empty musical staves.

Handwritten musical notation for the second system. Similar to the first system, it features a treble clef, one sharp key signature, and 4/4 time signature. A slur is present over the right-hand melody, indicating a phrase. The left hand continues with its complex accompaniment.

A set of five empty musical staves.

A set of five empty musical staves.

Handwritten musical notation for the third system, including first and second endings. The first ending is marked with 'I' and a repeat sign, and the second ending is marked with 'II'. The notation includes a treble clef, one sharp key signature, and 4/4 time signature.

A set of five empty musical staves.

A set of five empty musical staves.



Handwritten musical notation on a grand staff. The upper staff contains a melodic line with several notes and rests. The lower staff contains a few notes, including a chord with a sharp sign. The notation is in a cursive, handwritten style.

A set of five empty musical staves.

A set of five empty musical staves.

Handwritten musical notation on a grand staff. The upper staff contains a melodic line with several notes and rests. The lower staff contains a few notes, including a chord with a sharp sign. The notation is in a cursive, handwritten style.

A set of five empty musical staves.

A set of five empty musical staves.

A set of five empty musical staves.

A set of five empty musical staves.

A set of five empty musical staves.

A set of five empty musical staves.

Handwritten musical notation for the first system. The treble clef staff contains a melodic line with notes and accidentals (sharps and naturals). The bass clef staff contains a complex accompaniment with many notes, some marked with '+' signs, and some notes are crossed out with diagonal lines.

Handwritten musical notation for the second system. The treble clef staff continues the melodic line. The bass clef staff continues the complex accompaniment with many notes and some crossed out with diagonal lines.

Two sets of empty musical staves, each consisting of a treble clef staff and a bass clef staff.

Handwritten musical notation for the third system. The treble clef staff continues the melodic line. The bass clef staff continues the complex accompaniment with many notes and some crossed out with diagonal lines.

Handwritten musical notation for the fourth system. The treble clef staff continues the melodic line. The bass clef staff continues the complex accompaniment with many notes and some crossed out with diagonal lines.

Two sets of empty musical staves, each consisting of a treble clef staff and a bass clef staff.







2

Handwritten musical notation on a grand staff. The top staff has a treble clef and the bottom staff has a bass clef. The notation includes various notes, rests, and chord symbols. There are some markings that look like "A." and "B." above the notes. The piece is divided into measures by vertical bar lines.

Two sets of empty musical staves, each consisting of a grand staff with treble and bass clefs.

Handwritten musical notation on a grand staff, similar to the first system. It features treble and bass clefs, notes, rests, and chord symbols. The notation is more sparse than the first system.

Two sets of empty musical staves, each consisting of a grand staff with treble and bass clefs.

Handwritten musical notation on a grand staff, showing a few notes and rests. The notation is very sparse, with only a few notes visible in the first few measures.

Two sets of empty musical staves, each consisting of a grand staff with treble and bass clefs.



Handwritten musical notation for the first system, consisting of a treble and bass staff. The treble staff contains a melody with notes and rests, while the bass staff contains a complex accompaniment with many notes and some accidentals.

Handwritten musical notation for the second system, continuing the piece with more notes and chords in both the treble and bass staves.

Handwritten musical notation for the third system, showing further development of the musical ideas with various note values and accidentals.

A set of empty musical staves, consisting of two five-line staves.

A set of empty musical staves, consisting of two five-line staves.

Handwritten musical notation for the fourth system, featuring a treble staff with notes and a bass staff with chords and some notes.

A set of empty musical staves, consisting of two five-line staves.

A set of empty musical staves, consisting of two five-line staves.



Handwritten musical notation on a grand staff. The treble clef staff contains a melodic line with various note values and rests. The bass clef staff contains a bass line with chords and notes. The notation is somewhat sketchy and includes some corrections.

Handwritten musical notation on a grand staff. The treble clef staff has a melodic line with some notes and rests. The bass clef staff has a bass line with chords and notes. The notation is somewhat sketchy and includes some corrections.

Handwritten musical notation on a grand staff. The treble clef staff has a melodic line with some notes and rests. The bass clef staff has a bass line with chords and notes. The notation is somewhat sketchy and includes some corrections.

Two empty grand staves, each consisting of a treble clef staff and a bass clef staff, with no musical notation.

Handwritten musical notation on a grand staff. The treble clef staff has a melodic line with some notes and rests. The bass clef staff has a bass line with chords and notes. The notation is somewhat sketchy and includes some corrections.

Handwritten musical notation on a grand staff. The treble clef staff has a melodic line with some notes and rests. The bass clef staff has a bass line with chords and notes. The notation is somewhat sketchy and includes some corrections.



Handwritten musical notation on a grand staff (treble and bass clefs). The music consists of several measures with various notes, rests, and accidentals. There are some markings above the notes, possibly indicating fingerings or dynamics.

Handwritten musical notation on a grand staff. This system continues the piece with more complex rhythmic patterns and melodic lines in both hands.

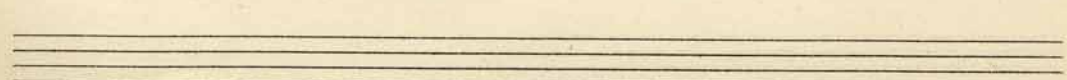
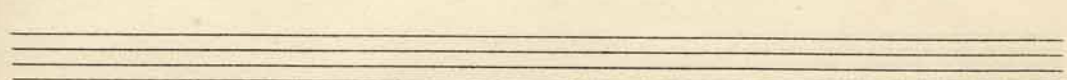
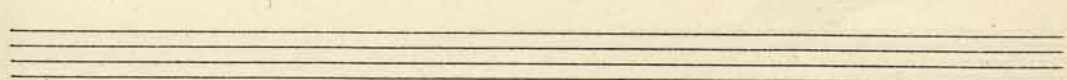
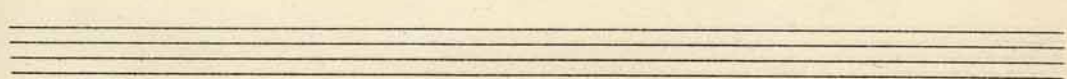
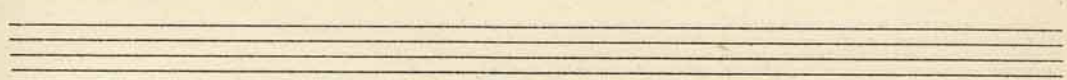
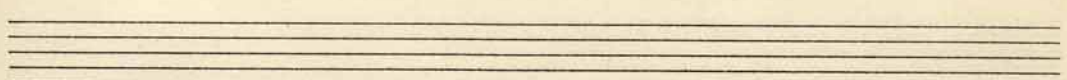
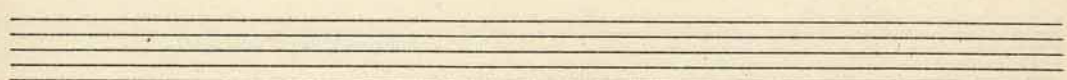
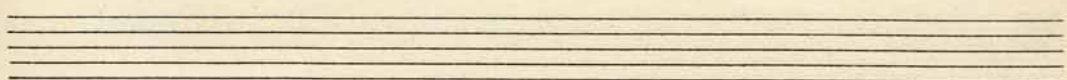
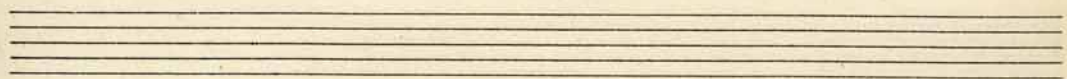
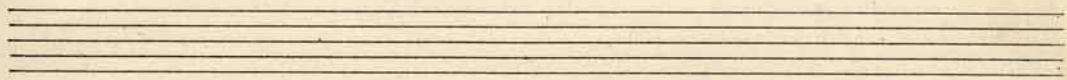
Handwritten musical notation on a grand staff. This system includes dynamic markings such as *ped* (pedal) and *mf* (mezzo-forte). The notation shows a mix of eighth and sixteenth notes.

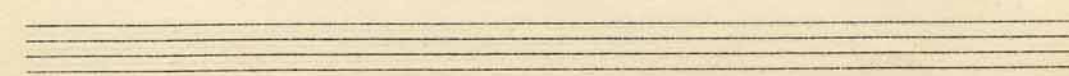
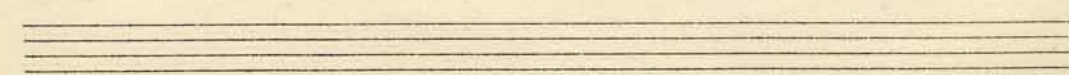
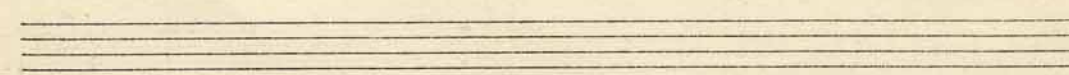
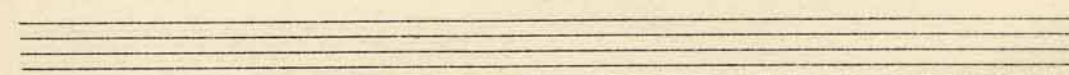
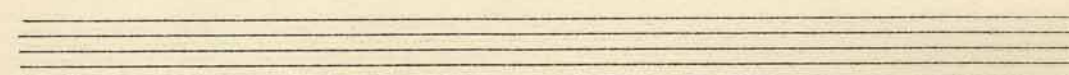
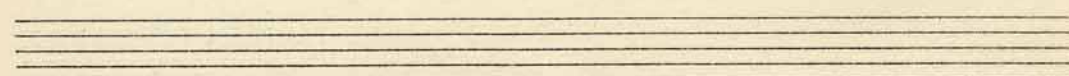
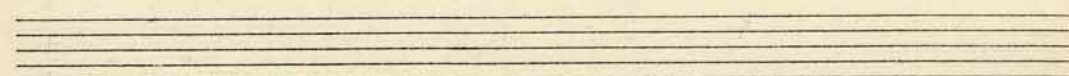
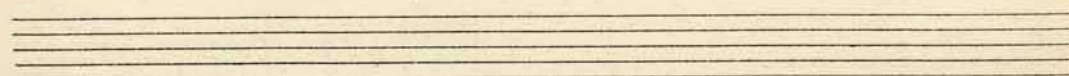
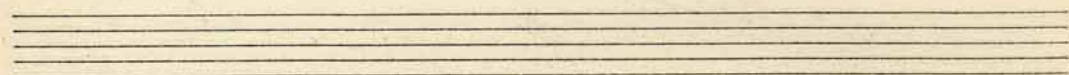
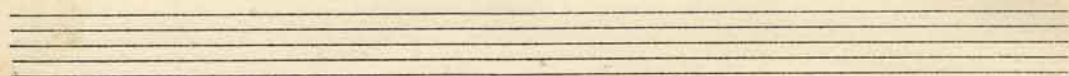
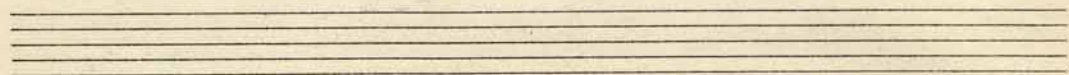
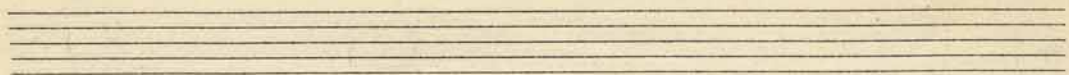
Handwritten musical notation on a grand staff. This system features a prominent melodic line in the right hand and a more rhythmic accompaniment in the left hand. There are some markings like *mf* and *mf.*

Handwritten musical notation on a grand staff. This system shows further development of the musical themes, with various chordal textures and melodic fragments.

Handwritten musical notation on a grand staff. This system appears to be the final part of the piece on this page, with some concluding notes and rests.

Handwritten musical notation on a grand staff. The top staff is in treble clef with a key signature of one flat (Bb) and a common time signature (C). The bottom staff is in bass clef with a common time signature (C). The music consists of approximately 12 measures, featuring a mix of eighth and sixteenth notes, rests, and some dynamic markings. The notation is somewhat sketchy and appears to be a preliminary draft.





Handwritten musical notation on a grand staff. The upper staff is in treble clef with a 9/4 time signature. The lower staff is in bass clef. The music consists of several measures with various note values and rests.

Empty grand staff consisting of two blank staves.

Empty grand staff consisting of two blank staves.

Handwritten musical notation on a grand staff. The upper staff is in treble clef. The lower staff is in bass clef. The music consists of several measures with various note values and rests.

Empty grand staff consisting of two blank staves.

Empty grand staff consisting of two blank staves.

Handwritten musical notation on a grand staff. The upper staff is in treble clef. The lower staff is in bass clef. The music consists of several measures with various note values and rests.

Empty grand staff consisting of two blank staves.

Empty grand staff consisting of two blank staves.



The first system of handwritten musical notation features a treble staff and a bass staff. The treble staff contains a sequence of notes, including a half note followed by several quarter notes, with some notes beamed together. The bass staff is filled with chords, many of which are marked with a '7' indicating a seventh chord. The notation is written in a cursive, handwritten style.

Two empty musical staves, one treble and one bass, are positioned below the first system. They are completely blank, with no notes or markings.

The second system of handwritten musical notation consists of a treble and bass staff. The treble staff shows a melodic line with various note values and rests. The bass staff contains chords and some melodic fragments. The handwriting is consistent with the first system.

Two empty musical staves, one treble and one bass, are positioned below the second system. They are completely blank.

The third system of handwritten musical notation features a treble and bass staff. The treble staff contains notes and rests, with some notes beamed together. The bass staff has chords and some melodic lines. The notation is handwritten and somewhat sketchy.

Two empty musical staves, one treble and one bass, are positioned below the third system. They are completely blank.

Handwritten musical notation on a grand staff. The top staff is in treble clef with a key signature of one sharp (F#) and a 3/4 time signature. The bottom staff is in bass clef. The music consists of several measures with various notes, rests, and accidentals. A double bar line is present at the end of the first system.

Handwritten musical notation on a grand staff. The top staff is in treble clef with a key signature of one sharp (F#) and a 3/4 time signature. The bottom staff is in bass clef. The music consists of several measures with various notes, rests, and accidentals. A double bar line is present at the end of the second system.

Empty musical staff consisting of five horizontal lines.

Empty musical staff consisting of five horizontal lines.

Empty musical staff consisting of five horizontal lines.

Empty musical staff consisting of five horizontal lines.

Empty musical staff consisting of five horizontal lines.

Empty musical staff consisting of five horizontal lines.

Empty musical staff consisting of five horizontal lines.

Empty musical staff consisting of five horizontal lines.

Empty musical staff consisting of five horizontal lines.



Handwritten musical notation on a grand staff. The upper staff contains a melodic line with various note values and rests. The lower staff contains a bass line with notes and rests, some of which are marked with a sharp sign (#).

Handwritten musical notation on a grand staff. The upper staff shows a melodic line with notes and rests. The lower staff shows a bass line with notes and rests.

Empty musical staff.

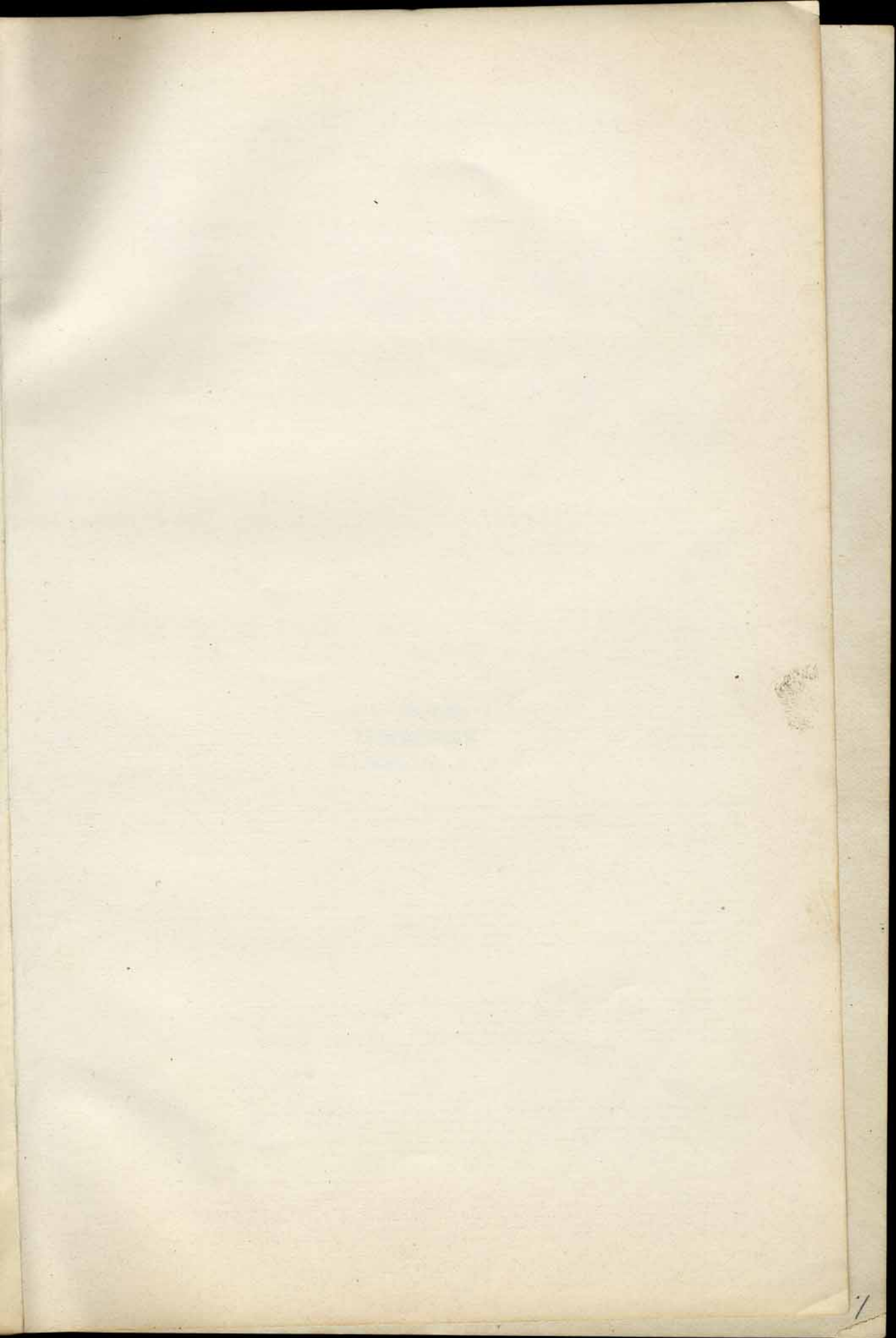
Empty musical staff.

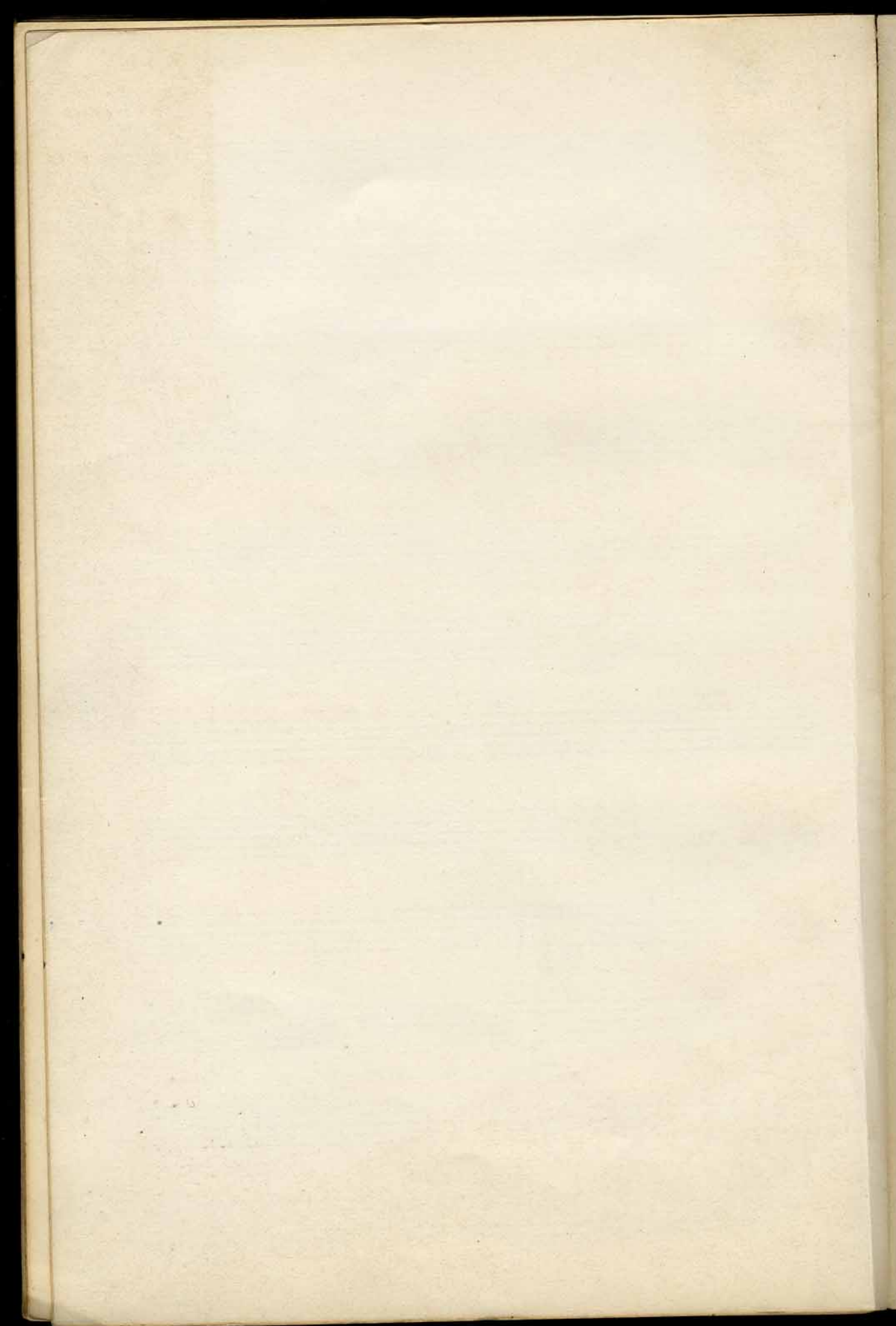
Empty musical staff.

Empty musical staff.

Handwritten musical notation on a grand staff. The upper staff contains a melodic line with notes and rests. The lower staff contains a bass line with notes and rests, some marked with a sharp sign (#).

Handwritten musical notation on a grand staff. The upper staff contains a melodic line with notes and rests. The lower staff contains a bass line with notes and rests, some marked with a sharp sign (#).





K. F. WASENIUS  
MUSIKHANDEL  
Helsingfors.

Leipzig, Dresden, Chemnitz.

C. A. Kiehm III.