



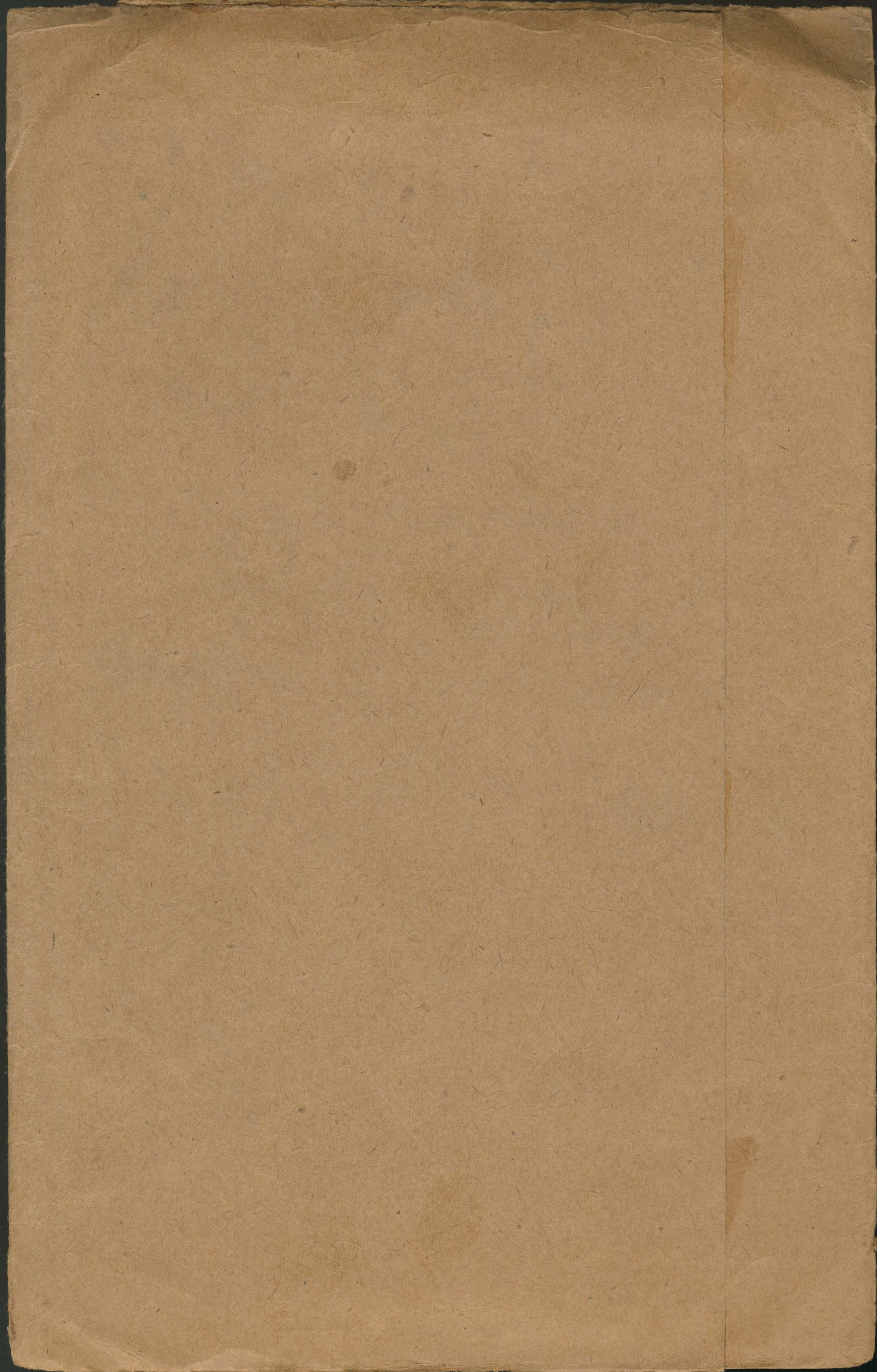
EX LIBRIS MARTIN WEGELIUS.
HELSINGFORS MUSIKINSTITUTS
BIBLIOTHEK.

Afdelning E/F II No 18a-d.

M. Wegelius?

"Djup är den vises leende"

Sopran 2el. Alt. 2el. Tenor 2el. Bas 2el.



Sopran.

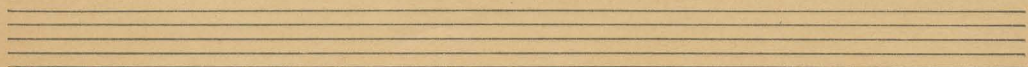
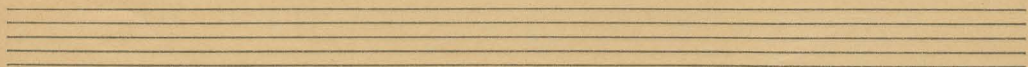
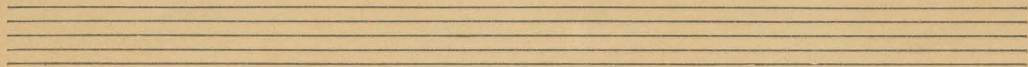
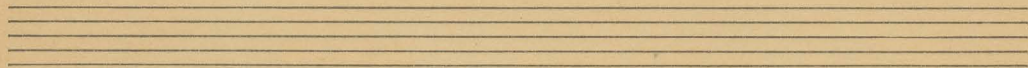
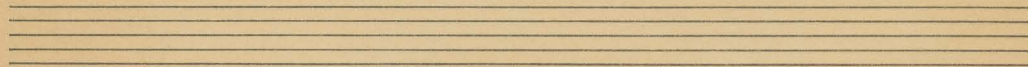
pp
Djupa i den vassa leen - de, när stilla stann

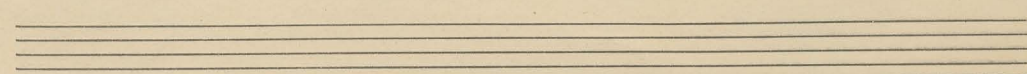
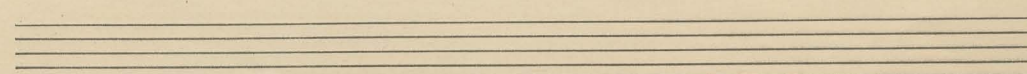
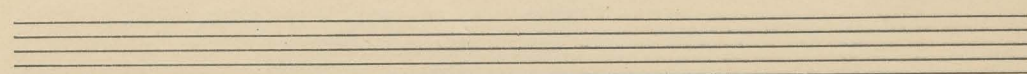
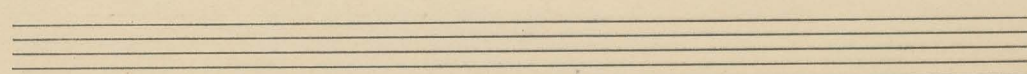
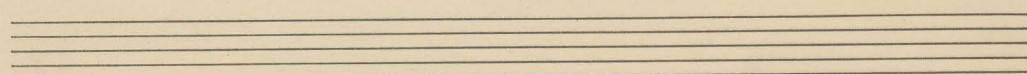
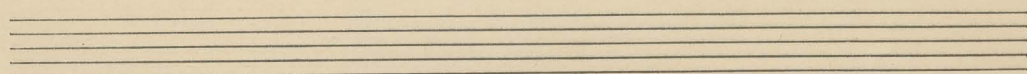
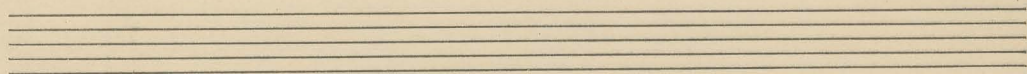
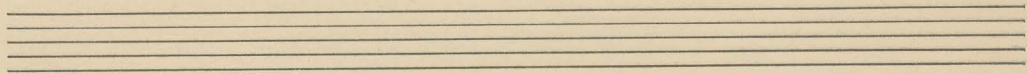
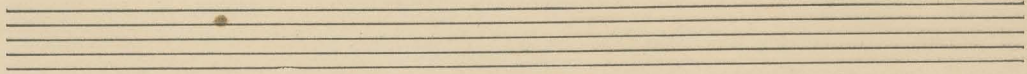
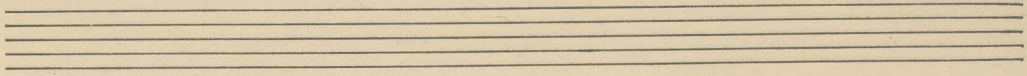
efter fädern slumrad in om höllens,

f *dimin*
Det ser sig om på dagens långa

p *cresc*
villan, Det lifvart sjun - ker som en sol

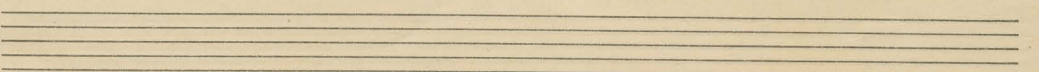
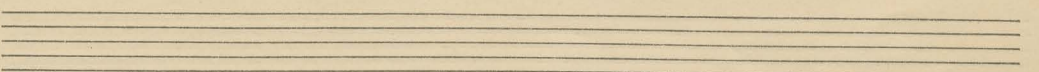
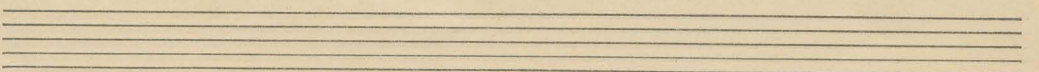
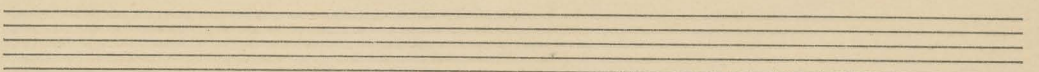
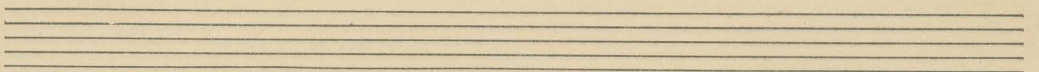
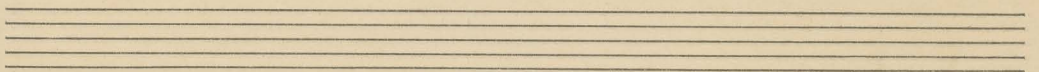
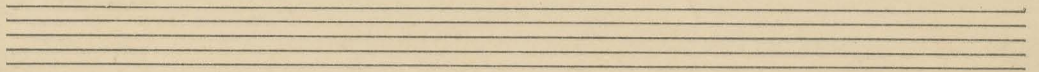
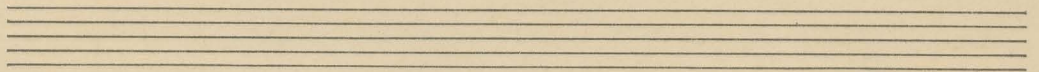
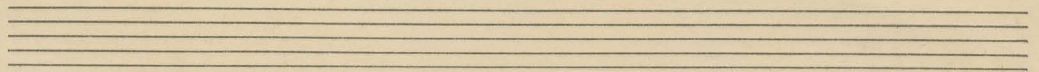
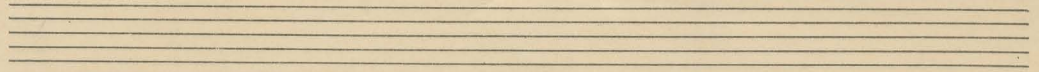
dimin
bak fjäl - len.





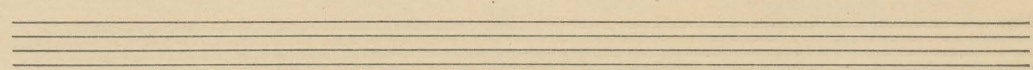
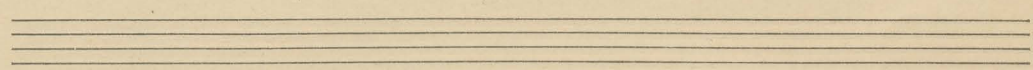
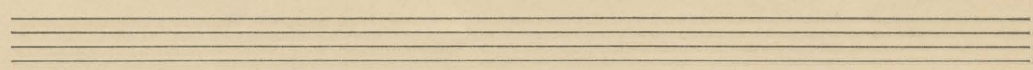
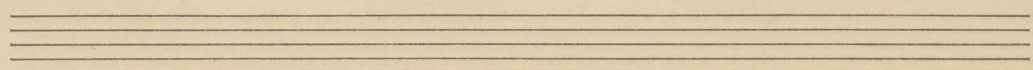
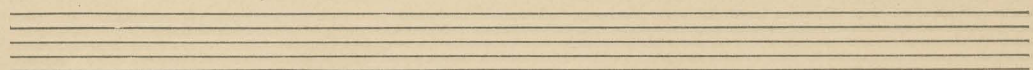
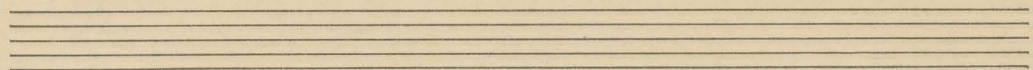
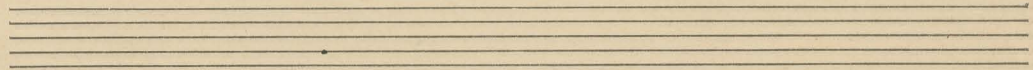
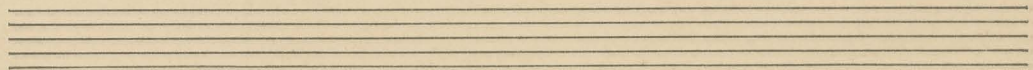
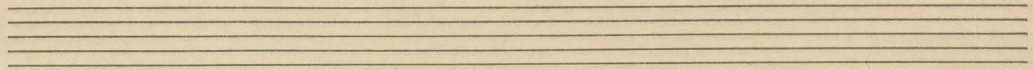
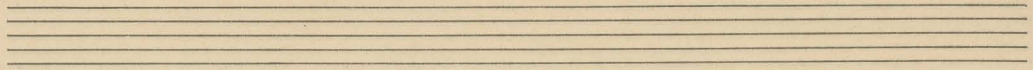
Sopran.

Djupt in den vises leende, när stilla
Han efter färdens slumrad in om kvällen,
Och ser sig om på ^{dagens} lifvets långa valla,
Och lifvet tjun - ker som en tol om kväl -
- len.



Act.

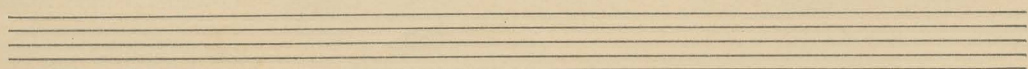
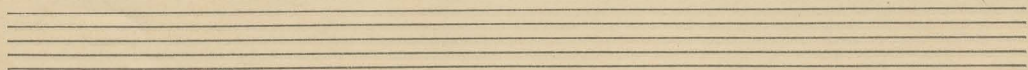
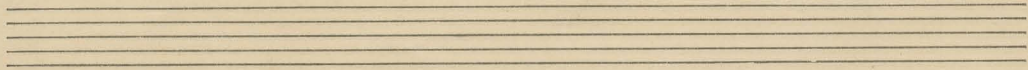
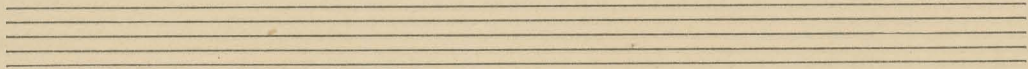
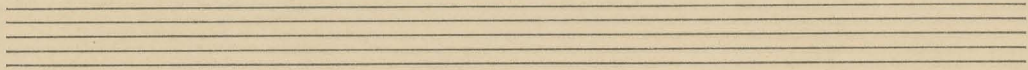
Djupa är den vises leen - di, när stillea
Han efter färden slumrar inom kvällen,
Och ser sig om på fagens länga
villa, och lifvet tjunker som en sol bak
kval - len.

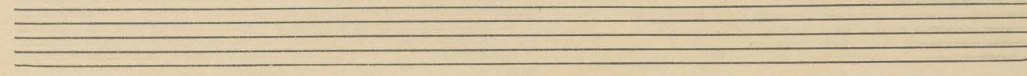
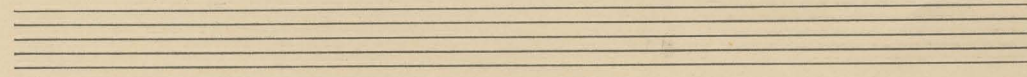
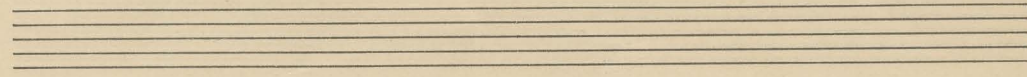
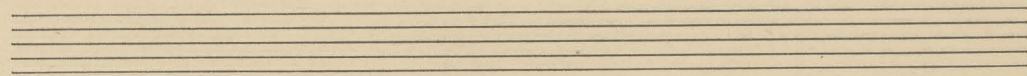
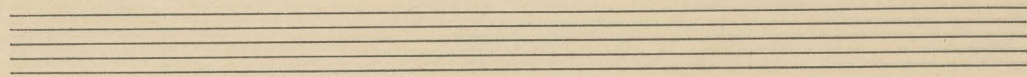
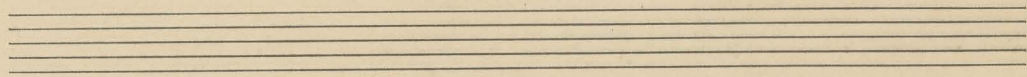
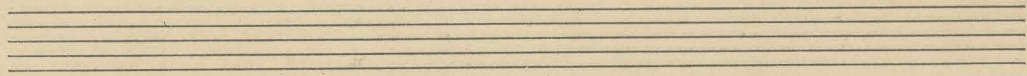
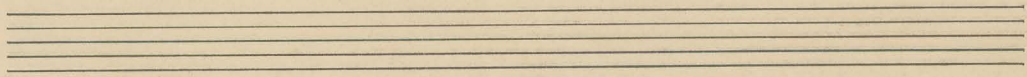
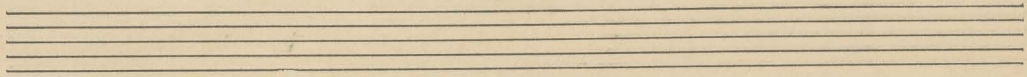
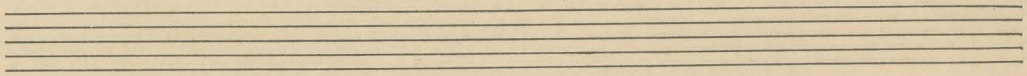


Alc.

p *pp*

Djupa in den vises leende, när
stilla slau efter färdens slumrar in om
sin
kvalan, och ser sig om på jagens
länga villa, och lifvet sjunker som en
crescendo - *dimin p*
sol bak fjäl - leu.

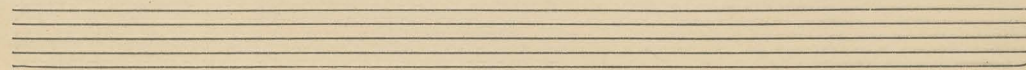
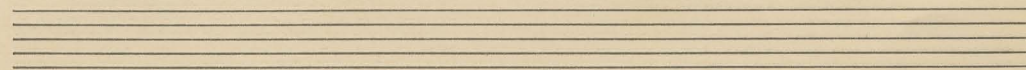
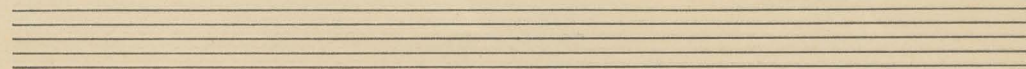
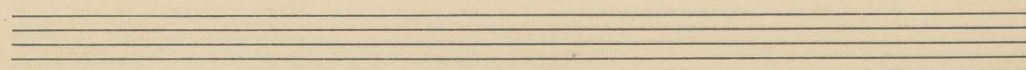
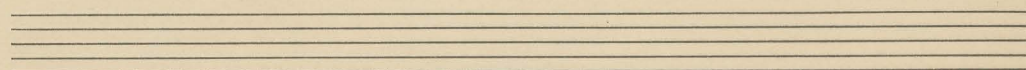
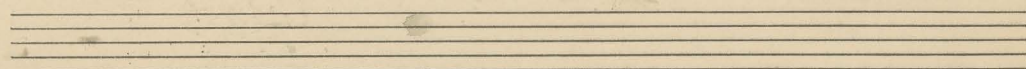
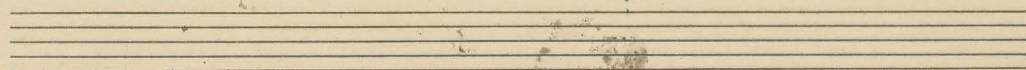
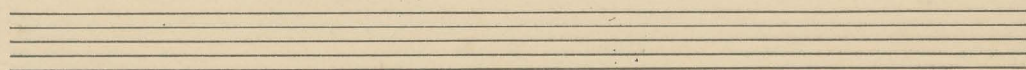
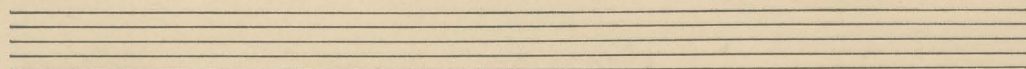
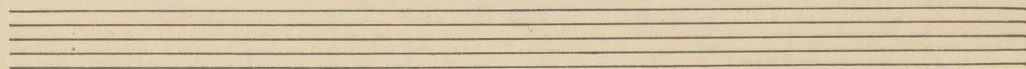


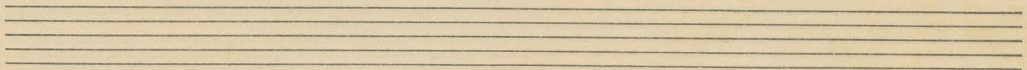
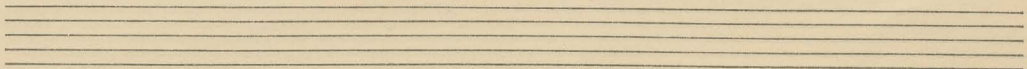
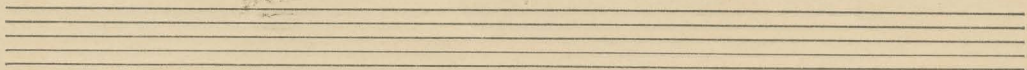
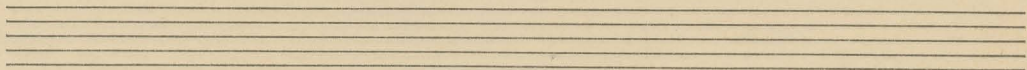
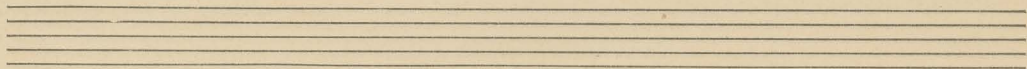
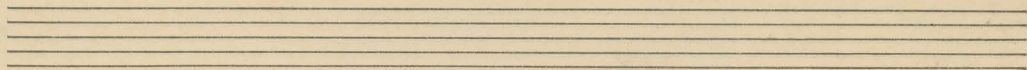
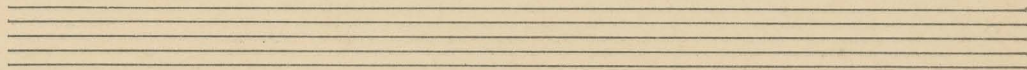
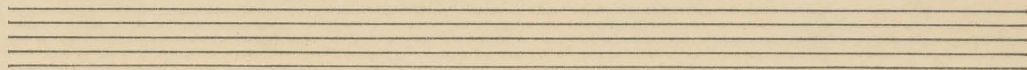
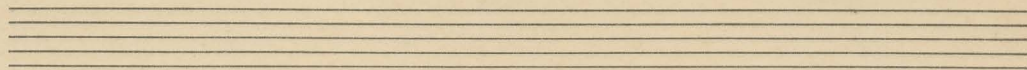
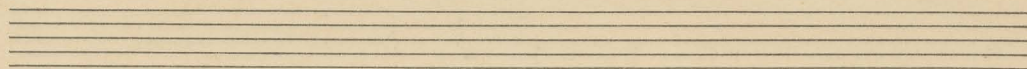


Tenor.

Djupa är den vises leende, när stilla
slan efter färdens slumrar in om kvällen,
Och ser sig om på djups långa
villor, Och lifvet synker som en
sol bak fjät — len.







Bas.

p
Djupt är den vices leen - de, när sticet
pp
slan efter färden slumrar in om kvällen,
pp
Der ser sig om på dagens långa vella,
pp
Der lifact sjun - ker som en sol
pp
Hjällen.



Handwritten musical notation on ten staves. Each staff consists of five horizontal lines. The notation is sparse, with only a few notes and stems visible, primarily in the lower half of each staff. The paper is aged and shows some discoloration.

Bas.

Djupt är den vides leen - de, när
stilla han efter färden slumrar in om
kvällen, och ser sig om på dagens
länga valla, och lifvet sjunker som en
sol bak fjällen.

